



South Lanarkshire

Gender-Based Violence

Partnership

domestic abuse • rape and sexual assault • harmful cultural practices •
sexual harassment and stalking • commercial sexual exploitation •

Equally Safe: South Lanarkshire 2020 - 2023

South Lanarkshire's strategy
for preventing and eradicating
gender based violence

Contents

Foreword

Introduction

- what is gender-based violence?
- statistics
- national context
- local context

What are we trying to achieve?

- vision
- priorities
- outcomes

Where are we now?

- shaping opinion
- improving service response
- policy and practice framework
- prevention activity

Where do we want to be?

- priority 1
- priority 2
- priority 3
- priority 4

How will we get there?

- priority 1
- priority 2
- priority 3
- priority 4

How will we monitor progress?

- quality standards
- performance framework
- governance

Support Services



Foreword

Gender-based violence is a major societal and public health issue which is recognised at both national and international level. The World Health Organization estimates that about 35% of women worldwide have experienced either physical and/or sexual intimate partner violence or non-partner sexual violence in their lifetime. The consequences of gender-based violence are profound and damaging and are a major contributor to inequality.

Tackling gender-based violence remains a key priority within Scotland. Equally Safe: Scotland's strategy for preventing and eradicating violence against women and girls sets out a clear vision of: 'a strong and flourishing Scotland, where all individuals are equally safe and respected, and where women and girls live free from all forms of violence and abuse – and the attitudes that help perpetuate it.'

South Lanarkshire's Gender-Based Violence Partnership is the mechanism to deliver on Equally Safe at a local, strategic level. The Partnership is committed to working collaboratively with key partners in the public, private and third sector to prevent and eradicate all forms of violence against women and girls in South Lanarkshire. The Partnership recognises that no agency alone has the resources, skills or reach to achieve the aims of Equally Safe. It is only by working between agencies, across all areas of life, that we will successfully achieve the vision and aims of Equally Safe.

South Lanarkshire's strategy for preventing and eradicating gender-based violence 2020-2023, outlines our vision, priorities and proposed direction for the next three years and shows how we will take short, medium and long term action to meet the outcomes set within Equally Safe.

It should be noted that much has been achieved within the three year period of our previous strategy, including an increased awareness in our communities of the support that is available and improvements in the delivery of services. However it is clear that much more needs to be done.

Paul Meechan
Chair of South Lanarkshire's Gender-Based Violence Partnership

Introduction

What is gender-based violence?

Gender-based violence (often referred to as gender-based abuse or violence against women and girls (VAWG)) is an umbrella term that encompasses a spectrum of abuse experienced mostly by women and girls and perpetrated mainly by men. This spectrum of abuse includes:

- physical, sexual and psychological abuse including domestic abuse and rape
- sexual harassment and stalking
- commercial sexual exploitation, including prostitution, pornography and trafficking
- harmful cultural practices, including so called 'honour' based violence, forced marriage and female genital mutilation

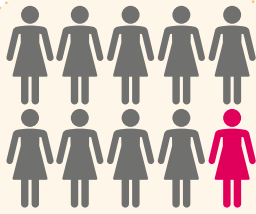
For the purpose of this strategy, we have used the Scottish Government definition of gender-based violence:

'gender-based violence is a function of gender inequality and an abuse of male power and privilege. It takes the form of actions that result in physical, sexual and psychological harm or suffering to women and children, or affront their human dignity, including threats of such acts, coercion or arbitrary deprivation of liberty, whether occurring in public or private life. It is men who predominantly carry out such violence and women who are predominantly the victims of such violence'

The focus for the South Lanarkshire Gender-Based Violence Partnership will continue to be on all forms of violence against women, acknowledging (as per the Scottish Government definition) that women and girls are at risk of such abuse, precisely because they are female. Clearly boys and men can also experience violence and there is no diminution of the seriousness of the harm they can experience or any proposal to alter the support offered to them. However, Equally Safe acknowledges that 'being female in itself can lead to a range of discrimination and disadvantage, including experience of male violence.' We therefore recognise that women and girls are disproportionately affected by particular forms of violence because they are women and girls. This definition includes children of all genders as subject to harm through violence. This definition also includes women and girls across all protected characteristics defined by equality legislation – age, disability, gender reassignment, marriage and civil partnership, pregnancy and maternity, race, religion and belief and sexual orientation.



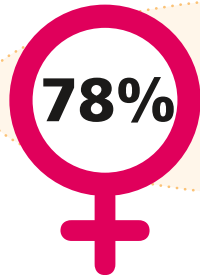
Statistics



1 in 10 women in Scotland has experienced rape

At least **£1.8m** pounds is allocated to specialist services to tackle gender-based violence within South Lanarkshire

In 2016/2017, the conviction rate for rape and attempted rape fell to its lowest level since 2008/2009



There were **1196** reported cases of forced marriage in the UK in 2017, **78%** of victims were women



2400 referrals for support were made to specialist gender-based violence services in South Lanarkshire between April 2018 and March 2019



All forms of gender-based violence cost Scotland **£4billion a year**

In 2017/2018, Police Scotland recorded **59,541** incidents of domestic abuse,



4 in 5 had a female victim and male perpetrator



POLICE SCOTLAND
Keeping people safe

In 2017/2018, Police Scotland recorded **3303 incidents** of domestic abuse in South Lanarkshire



Disabled women are **twice as likely** to experience men's violence as non-disabled women



1 in 3 girls report some form of sexual violence in intimate partner relationships

Between April 2018 and March 2019, **256 cases** were discussed at South Lanarkshire's Multi Agency RISK Assessment Conferences, with **411** attached children identified. **0.4%** of cases related to victims aged between 16 and 17



55 referrals of potential victims of human trafficking for sexual exploitation were made to Police Scotland in 2017/2018, 93% were women and girls



Black and ethnic minority women face higher levels of domestic abuse, so-called honour killings and suicide driven by abuse



It is estimated that over **100,000 children** in Scotland experience domestic abuse

National context

Equally Safe: Scotland's strategy for preventing and eradicating violence against women and girls was launched in 2014 and revised in 2016 (Equally Safe Strategy). It sets out a shared understanding of the causes, risk factors and scale of the problem nationally. It identifies four key priority areas:

- Scottish society embraces equality and mutual respect, and rejects all forms of violence against women and girls
- women and girls thrive as equal citizens – socially, culturally, economically and politically
- interventions are early and effective, preventing violence and maximising the safety and wellbeing of women, children and young people
- men desist from all forms of violence against women and girls, and perpetrators of such violence receive a robust and effective response

There are a number of key drivers for the prevention of gender-based violence and gender inequality including:

Human Rights: Violence against women and girls, in any form, has no place in a safe, strong, successful Scotland. It damages health and wellbeing, limits freedom and potential and is a violation of the most fundamental human rights.

Economics: The Scottish Government has estimated the costs of domestic abuse to the Scottish public purse as £2.3 billion while all forms of gender-based violence cost Scotland £4 billion. These costs are borne across an array of public budgets including justice, health, policy and charity sector funding. As per Christie Commission findings (2011), investment in preventative approaches reduces long-term costs. Investing in the primary prevention of gender-based violence and gender inequality will save money in the long term as increased gender equality and decreased gender-based violence will improve outcomes for not just women and girls in terms of health and wellbeing, education, safety, financial inclusion and employment, but also for all individuals, families, communities and economies across Scotland.

Legislation: It is not just a moral obligation to tackle gender-based violence and uphold the rights of women and girls, it is also our legal obligation, as set out by international treaties and human rights obligations. These include:

- the Council of Europe Convention on Preventing and Combating Violence Against Women and Domestic Violence (sometimes known as the Istanbul Convention)
- the Global Platform for Action calling on Governments to take integrated measures to prevent and eliminate violence against women and girls
- the Human Rights Act, which incorporates the protections set out in the European Convention on Human Rights into Scots Law
- the United Nations Convention on the Elimination of Discrimination Against Women, an agenda for action to end all forms of discrimination against women
- the United Nations Convention on the Rights of the Child (UNCRC), an international human rights treaty that grants all children and young people aged 17 and under, a comprehensive set of rights.



Local context

Gender-Based Violence Partnerships are the principal vehicle for implementing Equally Safe at a local level and ensuring a joined-up, evidence informed approach is taken to preventing and eradicating violence against women and girls. The primary function of Gender-Based Violence Partnerships is to ensure that best use is made of all available resources in the community and that women and girls affected by violence and abuse receive integrated, relevant and effective services. In order to do this, a well-functioning and resourced Gender-Based Violence Partnership would normally be expected to undertake the following activities:

- conduct needs assessments
- strategic reviews and annual planning
- performance reporting
- quality assurance
- disseminating learning and development opportunities
- promoting a preventative approach
- identifying resources
- informing work being undertaken nationally

Gender-Based Violence Partnerships are key in helping to achieve the visions and aims set out in Equally Safe. Partnerships are expected to use Equally Safe as a reference point in conducting their work and should be working in the context of the four Equally Safe priorities.

South Lanarkshire's Gender-Based Violence Partnership has been operational since 1999 and has evolved from focussing solely on domestic abuse, to considering all forms of gender-based violence, in the context of Equally Safe. The Partnership now forms part of South Lanarkshire's Public Protection Team which promotes effective partnership working between the Gender-Based Violence Partnership, Child Protection Committee, Adult Protection Committee, MAPPA and Alcohol and Drugs Partnership.

The Partnership recognises that people's lives are complex and they often experience multiple challenges and inequalities which cannot be solved by partners working in isolation. Effective partnership working both within our partnership and between our partnership and other local strategic structures is therefore essential in ensuring that outcomes for women, girls and children affected by gender-based violence are improved.

The Partnership is made up of the following members:

- Adult and Child Protection Committee representation
- ASSIST
- Education Resources, South Lanarkshire Council
- Finance and Corporate Resources (Equalities), South Lanarkshire Council
- Housing and Technical Resources, South Lanarkshire Council
- Lanarkshire Rape Crisis Centre
- NHS Lanarkshire
- Police Scotland
- Social Work Resources, South Lanarkshire Council
- South Lanarkshire Community Safety Partnership
- Victim Support
- Women's Aid South Lanarkshire and East Renfrewshire

What are we trying to achieve?

Vision

'Working together to ensure that women and girls in South Lanarkshire are equally safe at home, at work and in the community.'

Our vision is of a strong and flourishing South Lanarkshire, where all individuals are equally safe and respected, and where women and girls live free from all forms of violence and abuse. No woman or girl in South Lanarkshire should be subjected to violence or abuse of any kind (physical, emotional, sexual or psychological) and no child or young person should have to experience gender-based violence or have to live with the impact of it.

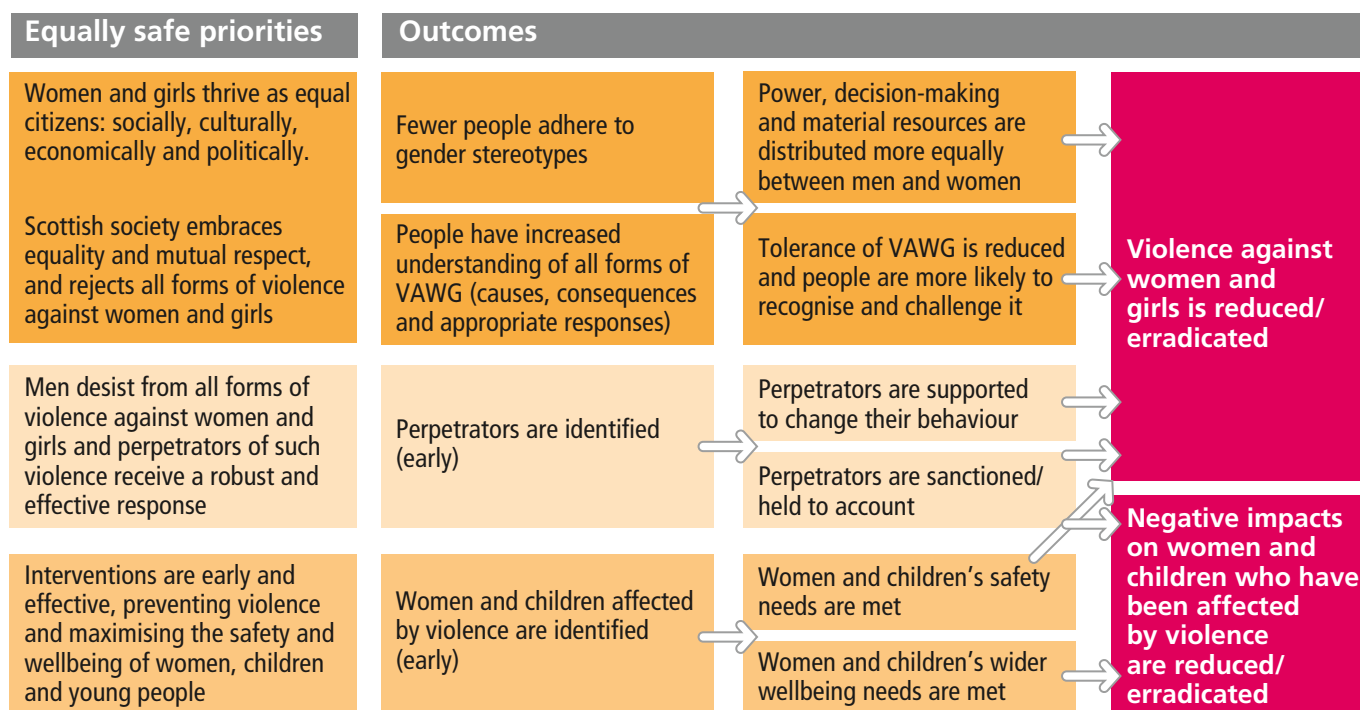
Priorities

The four priorities of the South Lanarkshire Equally Safe Strategy mirror those set out in the national Equally Safe strategy:

- 1 South Lanarkshire society embraces equality and mutual respect, and rejects all forms of violence against women and girls;
- 2 women and girls in South Lanarkshire thrive as equal citizens: socially, culturally, economically and politically;
- 3 interventions are early and effective, preventing violence and promoting women's safety and wellbeing in South Lanarkshire; and
- 4 men in South Lanarkshire desist from all forms of violence against women and girls, and perpetrators of such violence receive a robust and effective response.

Outcomes

The following logic model highlights the key outcomes that contribute to each of the identified priorities and the relationship between them:



Where are we now?

Shaping opinion

The Partnership continues to offer a wide range of learning and development opportunities for staff members from across the multi-agency partnership via face to face training and e learning modules. Public information has remained a priority with toilet door stickers distributed widely across South Lanarkshire, providing contact details for local and national services. Social media platforms have been used to share messages and contact information relating to gender-based violence and one off events have been held to raise awareness of particular issues including prostitution, with South Lanarkshire hosting 'Inside Outside,' which amplifies the voices of women who are, or have been, involved in the sex industry in Scotland.

Improving service response

Much work has been done to improve the response of services to provide a consistent joined up approach to gender-based violence which is sensitive to the needs to victims. The Safe and Together model of practice is an example of a multi-agency approach taken to improve service response in domestic abuse cases where children are involved. Much work has also been done to deliver routine enquiry within selective Health Services and South Lanarkshire's Gender-Based Violence Partnership continues to host the monthly Multi Agency Risk Assessment Conference (MARAC) which responds to those at highest risk of serious domestic assault or domestic homicide. A MARAC coordinator is now in post, funded jointly by both South Lanarkshire and North Lanarkshire Services.

Policy and practice framework

Numerous strides have been made in relation to ensuring that policy and guidance is in place to support staff to carry out their roles effectively. Much of this work has been completed in conjunction with the other strands of South Lanarkshire's Public Protection Team: Child Protection Committee, Adult Protection Committee and MAPP. Recent multi-agency guidance has related to Forced Marriage, Female Genital Mutilation and Domestic Abuse and the Protection of Children. The Gender-Based Violence Partnership has also created a MARAC protocol and induction pack to support our high risk process. We have also worked to deliver on national policy and are involved in contributing to the National VAWG Quality Standards and Performance Framework.

Prevention activity

South Lanarkshire's Gender-Based Violence Partnership has worked to prioritise prevention activity and has taken the lead in the implementation of the 'Mentors in Violence Prevention (MVP) programme within 11 secondary schools in South Lanarkshire. MVP aims to raise awareness of gender-based violence issues that impact on young people in Scotland. The Partnership has also supported Police Scotland colleagues to raise awareness locally of the Disclosure Scheme: Domestic Abuse Scotland which aims to empower both men and women with the right to ask about the background of their partner or potential partner. The Partnership has also been involved in the Equally Safe at Work accreditation programme, which South Lanarkshire Council have been a pilot area for. This aims to support local authorities to take steps to advance gender equality within the workplace and foster a zero tolerance approach to violence against women and girls. South Lanarkshire Social Work Resources also hosts the Caledonian Programme which is an approach to addressing men's domestic abuse and improving the lives of women, children and men.

Where do we want to be?

Priority 1

Scottish society embraces equality and mutual respect, and rejects all forms of violence against women and girls.

Community attitudes towards violence against women and girls are a key predictor of perpetration of such abuse. They can also heavily influence women and children's own responses to victimisation, as well as those of wider society and potentially be a barrier to children and young people speaking out about gender-based violence. Gender stereotypes play a central role, with individuals who hold discriminatory attitudes being more likely to tolerate violence and abuse against women. An important step for our partnership is to continue to raise awareness of what constitutes violence and abuse, and that it is unacceptable in any form.

Priority 2

Women and girls thrive as equal citizens – socially, culturally, economically and politically.

Societies in which women's participation is valued, and where there are fewer economic, social or political differences in power between men and women, have lower levels of violence. We want women in South Lanarkshire to enjoy the same opportunities in life as men – this includes women being economically independent, with equal opportunity to achieve their full potential in all sectors and at all levels of the labour market.

Priority 3

Interventions are early and effective, preventing violence and maximising the safety and wellbeing of women, children and young people.

There is a range of expertise and support available in public and third sector organisations which provide support and provision to those affected by gender-based violence in South Lanarkshire. We want to ensure that we have an integrated system of mainstream, specialist third sector services capable of delivering a coherent and consistent response across a diverse range of needs. It is vital that services that come in to daily contact with women, children and young people are able to identify those at risk and offer an appropriate, safe and consistent response, from their very first point of contact.

Priority 4

Men desist from all forms of violence against women and girls, and perpetrators of such violence receive a robust and effective response.

The justice system has an important role in the enforcement of the law and prevention of gender-based violence. Prosecution is important for survivors because it addresses the crime they have experienced and can help their recovery by acknowledging their status as survivors. There is growing consensus however, that prosecution alone is not enough to eradicate the problem of gender-based violence. Where appropriate, perpetrators must be supported to change their behaviour and they must be identified early. In South Lanarkshire, we want to reinforce the consistent message that all forms of gender-based violence are not acceptable and that perpetrators must expect to receive a response which is proportionate but equally swift and effective from all agencies.



How will we get there?

The South Lanarkshire Gender-Based Violence Strategy and Action Plan compliments and supports the work of individual partner agencies, the wider South Lanarkshire Public Protection Strategy and should be considered in conjunction with Equally Safe: A Delivery Plan for Scotland's strategy to prevent and eradicate violence against women and girls (2017 – 2021) (Scotland's Equally Safe Delivery Plan).

Equally Safe Delivery Plan Priorities and Outcomes	What existing partnership activities need to continue to be delivered to help achieve these priorities?	What new activities need to take place to help achieve these priorities?
<p>Priority 1: South Lanarkshire embraces equality and mutual respect, and rejects all forms of violence against women and girls.</p>		
<p>Outcome 1.1 People in South Lanarkshire have increased understanding of all forms of gender-based violence (causes, consequences and appropriate responses).</p> <p>Outcome 1.2 Tolerance of gender-based violence in South Lanarkshire is reduced and people are more likely to recognise and challenge it.</p>	<p>Continue the roll out of the Mentors in Violence Prevention Programme within Secondary Schools in South Lanarkshire (as per the Mentors in Violence Prevention Development Plan: South Lanarkshire) to ensure that young people better understand positive and healthy relationships and stand up to violence and toxic masculinity.</p> <p>Continue to raise awareness of so-called honour based violence, including Female Genital Mutilation and Forced Marriage via staff briefings and public awareness activity.</p>	<p>1.1 Develop a communication strategy for the Gender-Based Violence Partnership, highlighting key messages, making productive use of social media. Campaign topics (based on identified need) will include:</p> <ul style="list-style-type: none"> • sexual harassment and sexism • sexual violence and consent • domestic abuse (Scotland) act 2018 • gender stereotypes <p>1.2 Partnership position statement on prostitution to be developed which sends a clear message to the workforce that prostitution is a form of violence against women.</p> <p>1.3 Support all South Lanarkshire schools to adopt a whole school approach to promoting gender equality and preventing gender-based violence.</p> <p>1.4 Leaders within all partner organisations, via South Lanarkshire's Chief Officer's Group, to demonstrate a strong commitment to preventing gender-based violence and advancing gender equality.</p>



Equally Safe Delivery Plan Priorities and Outcomes	What existing activities need to continue to be delivered to help achieve these priorities?	What new activities need to take place to help achieve these priorities?
<p>Priority 2: Women and girls in South Lanarkshire thrive as equal citizens: socially, culturally, economically and politically.</p>		
<p>Outcome 2.1 Fewer people adhere to gender stereotypes.</p> <p>Outcome 2.2 Power, decision making and material resources are distributed more equally between men and women.</p>	<p>Continue to support South Lanarkshire Council in achieving 'Equally Safe at Work' accreditation, which aims to support local authorities to take steps to advance gender equality within the workplace and foster a zero tolerance approach to violence against women and girls.</p>	<p>2.1 Ensure that learning from the Equally Safe at Work Partnership is regularly shared with the Gender-Based Violence Partnership to ensure a joined-up approach is taken to progressing shared outcomes and activities and to allow for learning from the accreditation programme to be progressed where appropriate by partner agencies.</p> <p>2.2 Offer learning and development opportunities for managers and HR personnel on gender equality issues and gender-based violence.</p> <p>2.3 Develop meaningful and effective collaboration between the Gender-Based Violence Partnership and other strategic groups (for example Integrated Joint Board, Community Planning Partnership Board, GIRFEC Partnership Board) to ensure South Lanarkshire's strategic approach to Health and Social Care/Children's Services planning is gender competent.</p> <p>2.4 Support partner agencies to develop clear policy and practice guidelines around gender equality and gender-based violence.</p> <p>2.5 Support colleges and universities in South Lanarkshire to use the Equally Safe at Colleges and Universities toolkit created by University of Strathclyde.</p>



Equally Safe Delivery Plan Priorities and Outcomes	What existing activities need to continue to be delivered to help achieve these priorities?	What new activities need to take place to help achieve these priorities?
<p>Priority 3: Interventions in South Lanarkshire are early and effective, preventing violence and maximising the safety and wellbeing of women, children and young people.</p>		
<p>Outcome 3.1 Women and children affected by gender-based violence in South Lanarkshire are identified at an early stage.</p> <p>Outcome 3.2 Women and children's safety needs are met.</p> <p>Outcome 3.3 Women and children's wider wellbeing needs are met.</p>	<p>Continue to deliver Multi Agency Risk Assessment Conferences (MARAC) as per Safe Lives guidance and complete a programme of evaluation activity to measure outcomes and effectiveness.</p> <p>Continue to offer a wide range of gender-based violence training opportunities to the multi-agency workforce in a variety of forms.</p> <p>Continue the roll out of Safe and Together within South Lanarkshire, supporting workers to partner with domestic abuse victims and engage with people who have committed domestic abuse to enhance the safety and wellbeing of children.</p>	<p>3.1 Develop a Quality Assurance work plan, which encompasses an evaluation of the Disclose Scheme (Domestic Abuse) Scotland (DSDAS) and MARAC evaluation and a Risk Indicator Checklist Audit to ensure greater accountability and strengthen processes.</p> <p>3.2 Make basic awareness gender-based violence training compulsory for all roles in public services.</p> <p>3.3 Support all appropriate partner agencies to utilise the Risk Indicator Checklist (RIC) and referral pathways to ensure a consistent approach to early identification of domestic abuse.</p> <p>3.4 Support Community Justice approaches to use a gendered lens that understands the connections between women's offending and their experience of VAWG, including use of the Risk Indicator Checklist (RIC).</p> <p>3.5 Develop a Safe and Together implementation plan for South Lanarkshire which supports practice change.</p> <p>3.6 Develop multi-agency Human Trafficking Guidance in conjunction with Adult and Child Protection colleagues.</p>



Equally Safe Delivery Plan Priorities and Outcomes	What existing activities need to continue to be delivered to help achieve these priorities?	What new activities need to take place to help achieve these priorities?
<p>Priority 3: Men in South Lanarkshire desist from all forms of violence against women and girls and perpetrators of such violence receive a robust and effective response.</p>		
<p>Outcome 4.1 Perpetrators of gender based violence are identified at an early stage.</p> <p>Outcome 4.2 Perpetrators are sanctioned/held to account for their behaviour.</p> <p>Outcome 4.2 Perpetrators are supported to change their behaviour.</p>	<p>Continue to support the implementation of the Caledonian System within South Lanarkshire, a court mandated domestic abuse perpetrator programme.</p>	<p>4.1 Offer learning and development opportunities for the multi-agency workforce on working with perpetrators of domestic abuse.</p> <p>4.2 Develop a multi-agency guidance note for the Domestic Abuse (Scotland) Act 2018.</p>



How will we monitor progress?

a. Quality Standards

The Equally Safe Quality Standards (appendix 1) were published by the Scottish Government, COSLA and the Improvement Service in May 2018, in close collaboration with the National Violence against Women Network and other stakeholders.

The quality standards aim to capture data on the extent to which services, polices and processes that are most effective in tackling Gender-Based Violence, are currently being delivered across Scotland.

The South Lanarkshire Gender-Based Violence Partnership will complete the quality standards tool on an annual basis (and submit this to the Improvement Service) in order to measure and report on the progress that is made to prevent and eradicate gender-based violence at a local level, with the ultimate aim of reducing inequalities and improving outcomes for some of the most vulnerable people in our society.

It will allow the Partnership to provide a consistent basis for measuring the progress being made to implement our strategy, measure activity and performance and allow us to identify areas for improvement on an ongoing basis, to help inform future strategic and service planning at a local level.

b. Performance Framework

The Equally Safe Performance Framework (appendix 2) was developed in conjunction with the quality standards. The framework responds to the expectations set out in Equally Safe: Scotland's Strategy for Preventing and Eradicating Violence against Women and Girls in relation to effective performance management. It allows local partnerships to capture key performance data and facilitates a consistent approach to measuring and reporting on the progress being made to achieve the ambitions set out in Equally Safe at a local level.

The South Lanarkshire Gender-Based Violence Partnership will complete the performance framework tool on an annual basis (and submit this to the Improvement Service) to allow us to analyse useful data on an ongoing basis and evidence progress being made to achieve the activities and outcomes set in Equally Safe.

c. Governance

The South Lanarkshire Gender-Based Violence Partnership is part of South Lanarkshire's wider Public Protection team. This team promotes effective partnership working between the Adult and Child Protection Committees, MAPPAs and the Gender-Based Violence Partnership at strategic and policy level and is re-enforced through the structural arrangements of the South Lanarkshire Public Protection Chief Officer's Group.

Chief Officers are responsible for ensuring that their agencies, individually and collectively, work to protect adults, children and young people as effectively as possible. They are responsible for the leadership, direction and scrutiny of their respective protection services.

The importance of leadership in public protection is key and all activities of the Gender-Based Violence Partnership will continue to be reported to the Chief Officers Group on a regular basis.

Support Services

ASSIST

0141 276 7400

Support for victims of domestic abuse throughout their involvement with the court process as a result of the behaviour of partners or ex partners

Citizen's Advice Hamilton

01698 283477

Support for people to resolve money, legal and other problems by providing information and advice

CLICK

www.click.scot

Safety and wellbeing service for any woman selling or exchanging sex in Scotland

Domestic Abuse and Forced Marriage Helpline (24 hours)

0800 027 12 34

Helpline to support anyone with experience of domestic abuse or forced marriage, as well as their family members, friends, colleagues and professionals who support them

Hemat Gryffe Women's Aid

0141 353 0859

Asian, Black and Minority Ethnic Women's Aid Group in Scotland offering outreach and refuge accommodation

Homeless Out of Hours Service (evenings and weekends)

0800 24 20 24

Out of hours/emergency Housing Service

Lanarkshire Rape Crisis Helpline

01698 527 003

Emotional and practical support to women, and girls over the age of 12 years old where there are issues arising from all forms of sexual violence including rape, sexual assault and childhood sexual abuse no matter how long ago it happened

LGBT Scotland

0300 123 2523

Information and emotional support to lesbian, gay, bisexual and transgender people and their families, friends and supporters across Scotland

Men's Advice Line

0808 801 0327

Help and support for male victims of domestic abuse

Police Scotland Domestic Abuse Investigation Unit: 101

Police Scotland's purpose is to improve the safety and wellbeing of people, places and communities in Scotland

Rape Crisis Helpline (6pm – midnight)

08088 01 03 02

Helpline offers free and confidential support and information by phone or email. It is for anyone, women and men, affected by sexual violence, no matter when or how it happened

Scottish Women's Rights Centre Helpline

08088 010 789

Helpline for women aged 16 and over affected by violence and abuse by providing free legal information and advice

Social Work Emergency Services

0303 123 1008

Out of hours Social Work Service – evenings and weekends

Victim Support Lanarkshire

01698 30 11 11

Free and confidential support for anyone affected by crime

Women's Aid South Lanarkshire and East Renfrewshire

01355 249 897

Women's Aid South Lanarkshire and East Renfrewshire provide a range of needs led services including refuge accommodation, support and information, which ensures improved outcomes



-
- domestic abuse
 - rape and sexual assault
 - harmful cultural practices
 - commercial sexual exploitation
 - sexual harassment and stalking

If you need this information in another language or format, please contact us to discuss how we can best meet your needs.

Phone: 0303 123 1015

Email: equalities@southlanarkshire.gov.uk

www.southlanarkshire.gov.uk