



Adult Arts

Classes and Courses



**2021
2022**



Welcome

Welcome to our annual programme of classes and courses for adults 2021 – 22 which take place at venues throughout South Lanarkshire.

Covid-19

South Lanarkshire Leisure and Culture would like to extend our sincere thanks to all of our customers for their support and understanding at this difficult time. We have produced this brochure with the intention and hope of staging all of the classes and courses listed, however given the current and ongoing uncertainty that we are all facing, it should be noted that all of the advertised programme is subject to change, rescheduling or cancellation. The information contained in this brochure was correct at the time of going to print. We would encourage all of our customers to continue to book with us and we look forward to welcoming you back into our Venues at the very earliest opportunity. We can only do this with your continued support. Thank you.

Customer Information

The safety of customers is our highest priority, and we will be adhering to the latest government guidelines at the time of your visit in all our venues. An enhanced cleaning and management protocol will be in place throughout our premises. Toilet facilities will be available although you may experience a longer wait to use them due to additional restrictions.

Please allow plenty of time to arrive and enter the building as you may be asked to queue outside before entering and take part in additional security checks. If you or anyone in your party are experiencing any symptoms of COVID-19, you must not enter the venue.

This brochure covers all our regular classes for the four main terms of Term 1 – 2021 | Term 2 – 2021 | Term 3 – 2022 | Term 4 – 2022 (see page 4 for full term dates).

New taster workshops and courses will be offered by our specialist arts development officers from time to time, and as these will

be marketed separately we would advise you to ensure that your details are updated so we can ensure that you receive information about forthcoming events and activities that are of specific interest to you (e.g. Dance, Drama, Music, Visual Arts, Crafts or New Media). Please telephone or visit one of our box offices to update your mailing list details.

Activities for adults are restricted to participants aged 18 years and over.

Should you have any enquiries relating to the programme please contact: artsdevelopment@southlanarkshireleisure.co.uk or ekartscentresouthlanarkshireleisure.co.uk or contact Claire Armour, Arts Development Officer, Phone: (01355) 578159

Email claire.armour@southlanarkshireleisure.co.uk

jane.mccann@southlanarkshireleisure.co.uk

Jane McCann, Arts Development Officer, Phone: (01698) 452299

Email: jane.mccann@southlanarkshireleisure.co.uk

artsdevelopment@southlanarkshireleisure.co.uk

Children's classes

We have an extensive range of children's arts classes taking place across our cultural venues and other facilities. These are listed in separate geographical area brochures advertising everything, both arts and sports, under the banner of ACE and TINY ACE. While the classes are still available to attend on a pay as you go basis each term they can also be accessed via the ACE and TINY ACE membership scheme. For more information please ask at your local venue (see page 27) or online at www.slleisureandculture.co.uk/info/479/ace_childrens_activities

Look out for the new ACE brochure for your area. If you would like one of these sent to you directly please call 01698 476262 or email customer.services@southlanarkshireleisure.co.uk



Term Dates



Arts and Crafts (18+)



Drawing and Painting (18+)



General Art (18+)



Dance (50+)



Music (18+)



New Media (18+)



Booking Terms and Conditions



How to Book

Term dates

Please note that unless otherwise stated the following term dates are applicable to all our regular arts courses and all courses will run on the same day/time throughout all terms.

If you are interested in attending any of our courses, please contact the venues for further information. If you currently attend our courses you will be automatically re-enrolled into the next session as per the dates below. Please note that payment must be made for the next term during this re-enrolment period to secure your booking.

Term 1 Monday 16 August-Sunday 10 October

(excludes 24 and 27 September in some venues)

Automatic re-enrolment for term 2

Monday 27 September – Sunday 10 October

Term 2 Monday 18 October – Sunday 12 December

Automatic re-enrolment for term 3

Monday 29 November – Sunday 12 December

Please note that East Kilbride Arts Centre operates a merged term 1 and 2 from Monday 16 August to Sunday 15 November and automatic re-enrolment will take place from Monday 2 November until Sunday 15 November

Term 3 Wednesday 5 January – Tuesday 29 March 2022

Automatic re-enrolment for term 4

Monday 14 March – Sunday 27 March

Term 4 Tuesday 19 April- Monday 20 June 22

(excludes 2 May and 2 and 3 June in some venues)

Automatic re-enrolment for term 1 2022/2023

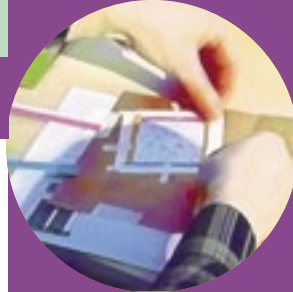
Monday 6 June – Sunday 19 June 22

Arts and Crafts

(18+)

Get Crafty

Indulge your creative side by trying out a different craft activity each week at this weekly craft class. Fill in a morning and dabble in felt making, silk painting and marbling. Each week you will try your hand at something new.



Rutherglen Town Hall

Monday 10am – noon

Term 1 [7 weeks] 16 August – 4 October *(excludes 27 September)*

Term 2 [8 weeks] 18 October – 6 December

Term 3 [12 weeks] 10 January – 28 March

Term 4 [8 weeks] 25 April – 20 June *(excludes 2 May)*

The Town House, Hamilton

Tuesday 10am – noon

Term 1 [8 weeks] 17 August – 5 October

Term 2 [8 weeks] 19 October – 7 December

Term 3 [12 weeks] 11 January – 29 March

Term 4 [9 weeks] 19 April – 14 June

Lanark Memorial Hall

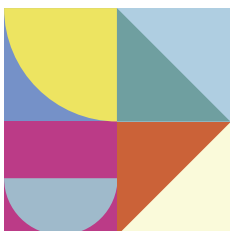
Tuesday 10am – noon

Term 1 [8 weeks] 17 August – 5 October

Term 2 [8 weeks] 19 October – 7 December

Term 3 [12 weeks] 11 January – 29 March

Term 4 [9 weeks] 19 April – 14 June



£7.45

All materials and equipment included in the class fees

Arts and Crafts

(18+)

Introduction to jewellery making

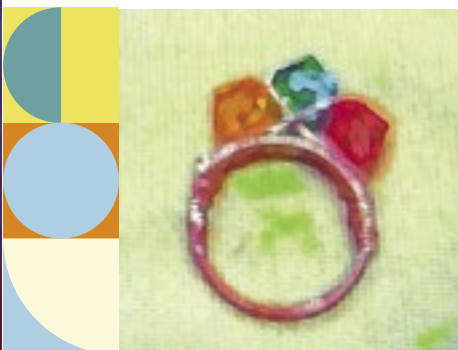
This course will introduce you to the tools and techniques of beadwork jewellery making, such as wirework, pearl knotting, chain making and wire twisting techniques. You will use the skills you have learned to make your own jewellery set.

Lanark Memorial Hall

Thursday

10am – noon

Term 1 [8 weeks]	19 August – 7 October	£88.80/£65.20 (conc.)
Term 2 [8 weeks]	21 October – 9 December	£88.80/£65.20 (conc.)
Term 3 [6 weeks]	6 January – 10 February	£66.60/£48.90 (conc.)
Term 3 [6 weeks]	17 February – 24 March	£66.60/£48.90 (conc.)
Term 4 [7 weeks]	21 April – 16 June	£77.70/£57.05 (conc.) <i>(excludes 2 and 9 June)</i>



All materials and equipment included in the course fees

Arts and Crafts

(18+)

Introduction to ceramics

This course will teach all the fundamental skills to kick off your creative journey with clay! You will learn techniques such as slab building, pinch pots, surface decoration, glazing, coil building and throwing on the potter's wheel to name but a few!

The Town House, Hamilton

Tuesday

6.45pm – 8.45pm

- Term 1 [8 weeks] **17 August – 5 October** £88.80/£65.20 (conc.)
Term 2 [8 weeks] **19 October – 7 December** £88.80/£65.20 (conc.)
Term 3 [6 weeks] **11 January – 15 February** £66.60/£48.90 (conc.)
Term 3 [6 weeks] **22 February – 29 March** £66.60/£48.90 (conc.)
Term 4 [9 weeks] **19 April – 14 June** £99.90/£73.35 (conc.)

Thursday

2pm – 4pm

- Term 1 [8 weeks] **19 August – 7 October** £88.80/£65.20 (conc.)
Term 2 [8 weeks] **21 October – 9 December** £88.80/£65.20 (conc.)
Term 3 [6 weeks] **6 January – 10 February** £66.60/£48.90 (conc.)
Term 3 [6 weeks] **17 February – 24 March** £66.60/£48.90 (conc.)
Term 4 [8 weeks] **21 April – 16 June** £88.80/£65.20 (conc.)
(excludes 2 June)

Thursday

6.45pm – 8.45pm

- Term 1 [8 weeks] **19 August – 7 October** £88.80/£65.20 (conc.)
Term 2 [8 weeks] **21 October – 9 December** £88.80/£65.20 (conc.)
Term 3 [6 weeks] **6 January – 10 February** £66.60/£48.90 (conc.)
Term 3 [6 weeks] **17 February – 24 March** £66.60/£48.90 (conc.)
Term 4 [8 weeks] **21 April – 16 June** £88.80/£65.20 (conc.)
(excludes 2 June)



All clay, glazes, equipment and firings included in the course fees

Arts and Crafts

(18+)

Pottery

East Kilbride Arts Centre

Monday 7pm – 9pm

Term 1 and 2 **16 August – 15 November** £134.40/£92.40 (conc.)
[12 weeks] *(excludes 27 September and 11 October)*

Term 3 [12 weeks] **10 January – 28 March** £134.40/£92.40 (conc.)

Term 4 [8 weeks] **25 April – 20 June** £91.20/£62.40 (conc.)
(excludes 2 May)

Wednesday 10am – noon | 7pm – 9pm

Term 1 and 2 **18 August – 10 November** £134.40/£92.40 (conc.)
[12 weeks] *(excludes 13 October)*

Term 3 [12 weeks] **5 January – 23 March** £134.40/£77.00 (conc.)

Term 4 [10 weeks] **20 April – 22 June** £112.00/£68.40 (conc.)

Thursday 10am – noon | 7pm – 9pm

Term 1 and 2 **19 August – 11 November** £134.40/£92.40 (conc.)
[12 weeks] *(excludes 14 October)*

Term 3 [12 weeks] **6 January – 24 March** £134.40/£92.40 (conc.)

Term 4 [8 weeks] **21 April – 16 June** £91.20/£62.40 (conc.)
(excludes 2 May)

Friday 10am – noon | 12.30pm – 2.30pm

Term 1 and 2 **20 August – 12 November** £134.40/£92.40 (conc.)
[12 weeks] *(excludes 15 October)*

Term 3 [12 weeks] **7 January – 25 March** £134.40/£92.40 (conc.)

Term 4 [8 weeks] **25 April – 20 June** £91.20/£62.40 (conc.)
(excludes 3 June)



All clay, glazes, equipment and firings included in the course fees

Arts and Crafts

(18+)

Pottery extra

East Kilbride Arts Centre

Monday 11.30am – 2.30pm

Term 1 and 2 **16 August – 15 November** £201.60/£138.00 (conc.)

[12 weeks] *(excludes 27 September and 11 October)*

Term 3 [12 weeks] **10 January – 28 March** £201.60/£138.00 (conc.)

Term 4 [8 weeks] **25 April – 20 June** £137.20/£94.00 (conc.)

(excludes 2 May)

Tuesday 10am – 1pm

Term 1 and 2 **17 August – 9 November** £201.60/£138.00 (conc.)

[12 weeks] *(excludes 12 October)*

Term 3 [12 weeks] **11 January – 29 March** £201.60/£138.00 (conc.)

Term 4 [9 weeks] **20 April – 15 June** £151.20/£103.50 (conc.)



All clay, glazes, equipment and firings included in the course fees

Arts and Crafts

(18+)

Textile design

This class will introduce you to textile design. Our experienced tutor will support you in learning basic hand stitches and machine skills, including embroidery and appliqué or, if you have sewn before our tutor will assist you in developing your skills further. You can try something new such as quilting, experimental lace making or just learn how to sew.

The Town House, Hamilton

Wednesday 10am – noon

- Term 1 [8 weeks] **18 August – 6 October** £88.80/£65.20 (conc.)
Term 2 [8 weeks] **20 October – 8 December** £88.80/£65.20 (conc.)
Term 3 [6 weeks] **5 January – 9 February** £66.60/£48.90 (conc.)
Term 3 [6 weeks] **16 February – 23 March** £66.60/£48.90 (conc.)
Term 4 [9 weeks] **20 April – 15 June** £99.90/£73.35 (conc.)

Lanark Memorial Hall

Wednesday 2pm – 4pm

- Term 1 [8 weeks] **18 August – 6 October** £88.80/£65.20 (conc.)
Term 2 [8 weeks] **20 October – 8 December** £88.80/£65.20 (conc.)
Term 3 [6 weeks] **5 January – 9 February** £66.60/£48.90 (conc.)
Term 3 [6 weeks] **16 February – 23 March** £66.60/£48.90 (conc.)
Term 4 [9 weeks] **20 April – 15 June** £99.90/£73.35 (conc.)

Rutherglen Town Hall

Friday 1pm – 3pm

- Term 1 [8 weeks] **20 August – 8 October** £88.80/£65.20 (conc.)
Term 2 [8 weeks] **22 October – 10 December** £88.80/£65.20 (conc.)
Term 3 [12 weeks] **7 January – 25 March** £133.20/£97.80 (conc.)
Term 4 [8 weeks] **22 April – 17 June** £88.80/£65.20 (conc.)
(excludes 2 June)

Textile art

East Kilbride Arts Centre

Thursday 10am – noon

- Term 1 and 2 [12 weeks] **19 August – 11 November** £85.80/£45.00 (conc.)
(excludes 14 October)
Term 3 [12 weeks] **6 January – 24 March** £85.80/£45.00 (conc.)
Term 4 [8 weeks] **21 April – 16 June** £58.40/£30.40 (conc.)
(excludes 2 June)

Arts and Crafts

(18+)

Dressmaking

If you are new to dressmaking we will take you through the basics, showing you how to read a pattern, how to layout and cut fabric, simple pattern adjustments like lengthening and shortening and some of the more basic techniques such as making a buttonhole, attaching a zip and hems.

East Kilbride Arts Centre

Monday

7pm – 9pm

Term 1 and 2

16 August – 15 November £133.20/£97.80 (conc.)

[12 weeks] *(excludes 27 September and 11 October)*

Term 3 [12 weeks]

10 January – 28 March £133.20/£97.80 (conc.)

Term 4 [8 weeks]

25 April – 20 June £90.40/£66.40 (conc.)

(excludes 2 May)

Tuesday

10am – noon

Term 1 and 2

17 August – 9 November £133.20/£97.80 (conc.)

[12 weeks] *(excludes 12 October)*

Term 3 [12 weeks]

11 January – 29 March £133.20/£97.80 (conc.)

Term 4 [9 weeks]

19 April – 14 June £99.90/£73.35 (conc.)

Tuesday

1pm – 3pm

Term 1 and 2

17 August – 9 November £133.20/£97.80 (conc.)

[12 weeks] *(excludes 12 October)*

Term 3 [12 weeks]

11 January – 29 March £133.20/£97.80 (conc.)

Term 4 [9 weeks]

19 April – 14 June £99.90/£73.35 (conc.)

Rutherglen Town Hall

Wednesday

1pm – 3pm

Term 1 [8 weeks]

18 August – 6 October £88.80/£65.20 (conc.)

Term 2 [8 weeks]

20 October – 8 December £88.80/£65.20 (conc.)

Term 3 [12 weeks]

5 January – 23 March £133.20/£97.80 (conc.)

Term 4 [9 weeks]

29 April – 15 June £99.90/£73.35 (conc.)



Arts and Crafts

(18+)

The Town House, Hamilton

Monday

10am – noon

Term 1 [7 weeks]

16 August – 4 October £77.70/£57.05 (conc.)
(excludes 27 September)

Term 2 [8 weeks]

18 October – 6 December £88.80/£65.20 (conc.)

Term 3 [6 weeks]

10 January – 21 February £66.60/£48.90 (conc.)

Term 3 [5 weeks]

28 February – 28 March £55.50/£40.75 (conc.)

Term 4 [7 weeks]

25 April – 14 June £77.70/£57.05 (conc.)
(excludes 2 May)



All materials and equipment included in the course fees

Arts and Crafts

(18+)

Stained glass

Tuition in the ancient art of stained glass making involving cutting glass, copper foiling, painting, etching, leading and soldering. Beginners welcome.

East Kilbride Arts Centre

Tuesday

1pm – 4pm | 7pm – 10pm

Term 1 and 2

17 August – 9 November £252.00/£181.80 (conc.)

[12 weeks] *(excludes 12 October)*

Term 3 [12 weeks]

11 January – 29 March £252.00/£181.80 (conc.)

Term 4 [9 weeks]

19 April – 14 June £189.00/£136.35 (conc.)



Drawing and Painting (18+)

Introduction to drawing and painting

This course will enable you to develop fundamental skills in drawing and painting through a flexible approach which will increase your confidence and knowledge of basic techniques. You will be introduced to colour mixing using the colour wheel and to different media including graphite, pastel, watercolours, acrylics and oil. The course introduced the genres of still life, landscape and portraits.

Lanark Grammar School

Monday 7pm – 9pm

Term 1 [7 weeks] **16 August – 4 October** £77.70/£57.05 (conc.)
(excludes 27 September)

Term 2 [7 weeks] **18 October – 6 December** £77.70/£57.05 (conc.)
(excludes 15 November)

Term 3 [5 weeks] **10 January – 21 February** £55.50/£40.75 (conc.)
(excludes 14 February)

Term 3 [5 weeks] **28 February – 28 March** £55.50/£40.75 (conc.)

Term 4 [7 weeks] **25 April – 20 June** £77.70/£57.05 (conc.)
(excludes 2 May and 6 June)

The Town House, Hamilton

Thursday 1pm – 3pm

Term 1 [8 weeks] **19 August – 7 October** £88.80/£65.20 (conc.)

Term 2 [8 weeks] **21 October – 9 December** £88.80/£65.20 (conc.)

Term 3 [6 weeks] **6 January – 10 February** £66.60/£48.90 (conc.)

Term 3 [6 weeks] **17 February – 24 March** £66.60/£48.90 (conc.)

Term 4 [8 weeks] **21 April – 16 June** £88.80/£65.20 (conc.)
(excludes 2 June)

Thursday 7pm – 9pm

Term 1 [8 weeks] **19 August – 7 October** £88.80/£65.20 (conc.)

Term 2 [8 weeks] **21 October – 9 December** £88.80/£65.20 (conc.)

Term 3 [6 weeks] **6 January – 10 February** £66.60/£48.90 (conc.)

Term 3 [6 weeks] **17 February – 24 March** £66.60/£48.90 (conc.)

Term 4 [8 weeks] **21 April – 16 June** £88.80/£65.20 (conc.)
(excludes 2 June)

Drawing and Painting (18+)

Rutherglen Town Hall

Monday

1pm – 3pm

Term 1 [7 weeks] **16 August – 4 October** £77.70/£57.05 (conc.)
(excludes 27 September)

Term 2 [8 weeks] **18 October – 6 December** £88.80/£65.20 (conc.)

Term 3 [12 weeks] **10 January – 28 March** £133.20/£97.80 (conc.)

Term 4 [8 weeks] **25 April – 20 June** £88.80/£65.20 (conc.)
(excludes 2 May)

Wednesday

4.45pm – 6.45pm

Term 1 [8 weeks] **18 August – 6 October** £88.80/£65.20 (conc.)

Term 2 [8 weeks] **20 October – 8 December** £88.80/£65.20 (conc.)

Term 3 [12 weeks] **5 January – 23 March** £133.20/£97.80 (conc.)

Term 4 [9 weeks] **20 April – 15 June** £99.90/£73.35 (conc.)

Thursday

10am – noon

Term 1 [8 weeks] **19 August – 7 October** £88.80/£65.20 (conc.)

Term 2 [8 weeks] **21 October – 9 December** £88.80/£65.20 (conc.)

Term 3 [12 weeks] **6 January – 24 March** £133.20/£97.80 (conc.)

Term 4 [8 weeks] **21 April – 16 June** £88.80/£65.20 (conc.)
(excludes 2 June)

Thursday

1pm – 3pm

Term 1 [8 weeks] **19 August – 7 October** £88.80/£65.20 (conc.)

Term 2 [8 weeks] **21 October – 9 December** £88.80/£65.20 (conc.)

Term 3 [12 weeks] **6 January – 24 March** £133.20/£97.80 (conc.)

Term 4 [8 weeks] **21 April – 16 June** £88.80/£65.20 (conc.)
(excludes 2 June)



All materials and equipment included in the course fees

Drawing and Painting (18+)

Intermediate drawing and painting

This is an intermediate course for those who have fundamental drawing and painting experience but are looking to develop their skills through new techniques and more advanced methods of creating work. You will be encouraged to evolve your own interests, both in terms of media (oils, acrylics, watercolours, mixed media etc.) and genre such as still life, portraiture, figure composition and landscape painting.

The Town House, Hamilton

Tuesday

7pm – 9pm

- Term 1 [8 weeks] **17 August – 5 October** £88.80/£65.20 (conc.)
Term 2 [8 weeks] **19 October – 7 December** £88.80/£65.20 (conc.)
Term 3 [6 weeks] **11 January – 15 February** £66.60/£48.90 (conc.)
Term 3 [6 weeks] **22 February – 29 March** £66.60/£48.90 (conc.)
Term 4 [9 weeks] **19 April – 14 June** £99.90/£73.35 (conc.)

Wednesday

1pm – 3pm

- Term 1 [8 weeks] **18 August – 6 October** £88.80/£65.20 (conc.)
Term 2 [8 weeks] **20 October – 8 December** £88.80/£65.20 (conc.)
Term 3 [6 weeks] **5 January – 9 February** £66.60/£48.90 (conc.)
Term 3 [6 weeks] **16 February – 23 March** £66.60/£48.90 (conc.)
Term 4 [9 weeks] **20 April – 15 June** £99.90/£73.35 (conc.)

Thursday

10am – noon

- Term 1 [8 weeks] **19 August – 7 October** £88.80/£65.20 (conc.)
Term 2 [8 weeks] **21 October – 9 December** £88.80/£65.20 (conc.)
Term 3 [6 weeks] **6 January – 10 February** £66.60/£48.90 (conc.)
Term 3 [6 weeks] **17 February – 24 February** £66.60/£48.90 (conc.)
Term 4 [8 weeks] **21 April – 16 June** £88.80/£65.20 (conc.)
(excluding 2 June)

Rutherglen Town Hall

Wednesday

7pm – 9pm

- Term 1 [8 weeks] **18 August – 6 October** £88.80/£65.20 (conc.)
Term 2 [8 weeks] **20 October – 8 December** £88.80/£65.20 (conc.)
Term 3 [12 weeks] **5 January – 23 March** £133.20/£97.80 (conc.)
Term 4 [9 weeks] **20 April – 15 June** £99.90/£73.35 (conc.)

Drawing and Painting (18+)

Sunday painter

This is an introduction / intermediate course where you will be able to develop your own interests; learning new techniques and more advanced methods of creating work: in acrylics, watercolours and mixed media.

East Kilbride Arts Centre

Sunday 2.30pm – 4.30pm

Term 1 and 2 22 August – 14 November £133.20/£97.80 (conc.)
[12 weeks] *(excluding 17 October)*

Term 3 [12 weeks] 9 January – 27 March £133.20/£97.80 (conc.)

Term 4 [9 weeks] 24 April – 19 June £99.90/£73.35 (conc.)



All materials and equipment included in the course fees

Drawing and Painting (18+)

Drawing and painting

An introduction to the basic painting and drawing skills offering guidance on form, line and colour. The course is based upon drawing/painting from the still-life, figure and landscape.

East Kilbride Arts Centre

- Monday** 10am – noon | 1pm – 3pm | 7pm – 9pm
Term 1 and 2 16 August – 15 November £95.40/£54.00 (conc.)
[12 weeks] (excludes 27 September and 11 October)
Term 3 [12 weeks] 10 January – 28 March £95.40/£54.00 (conc.)
Term 4 [8 weeks] 25 April – 20 June £64.80/£36.80 (conc.)
(excludes 2 May)
- Wednesday** 10am – noon | 1pm – 3pm | 7pm – 9pm
Term 1 and 2 18 August – 10 November £95.40/£54.00 (conc.)
[12 weeks] (excludes 12 October)
Term 3 [12 weeks] 5 January – 23 March £95.40/£54.00 (conc.)
Term 4 [9 weeks] 20 April – 15 June £71.55/£40.50 (conc.)
- Thursday** 1pm – 3pm | 7pm – 9pm
Term 1 and 2 19 August – 11 November £95.40/£54.00 (conc.)
[12 weeks] (excludes 14 October)
Term 3 [12 weeks] 6 January – 24 March £95.40/£54.00 (conc.)
Term 4 [8 weeks] 21 April – 16 June £64.80/£36.80 (conc.)
(excludes 2 June)
- Friday** 1pm – 3pm
Term 1 and 2 20 August – 12 November £95.40/£54.00 (conc.)
[12 weeks] (excludes 15 October)
Term 3 [12 weeks] 7 January – 25 March £95.40/£54.00 (conc.)
Term 4 [8 weeks] 22 April – 17 June £64.80/£36.80 (conc.)
(excludes 3 June)



General art

This course is designed for the budding artist to explore a more varied range of artistic styles and materials.

East Kilbride Arts Centre

Friday

10am – noon

Term 1 and 2

20 August – 12 November £95.40/£54.00 (conc.)

[12 weeks] *(excludes 15 October)*

Term 3 [12 weeks]

7 January – 25 March £95.40/£54.00 (conc.)

Term 4 [8 weeks]

22 April – 17 June £64.80/£36.80 (conc.)

(excludes 3 June)

All materials and equipment included in the course fees

Beginners illustration with calligraphy

An introduction to the basic illustration and technique of calligraphy, the art of fine writing, covering the materials, alphabet and technical terms involved. Beginners welcome.

East Kilbride Arts Centre

Tuesday

10am – noon

Term 1 and 2 [12 weeks]

17 August – 9 November

£84.60/£56.40 (conc.)

(excludes 12 October)

Term 3 [12 weeks]

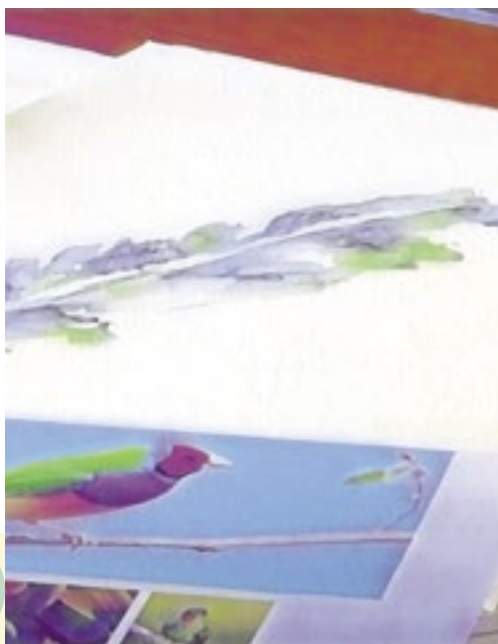
11 January – 29 March

£84.60/£56.40 (conc.)

Term 4 [9 weeks]

19 April – 14 June

£63.45/£42.30 (conc.)



All materials and equipment included in the course fees

Dance

(50+)

Young at Heart dance classes

Dance is a great way to exercise at any age but as we get older it's very important to keep active and mobile, which is what the Young at Heart dance class helps to do. These weekly classes offer tuition in various dance styles and levels of experience. They are created with the aim to improve your fitness, balance, flexibility and co-ordination and will also provide a fantastic work out for the brain. Come along and take the class at your own pace: stretch, step, glide and salsa your way to a fitter you. No previous dance experience needed, just the ability to get carried away with the music.

East Kilbride Arts Centre

Monday 11.15am – 12.15pm

Term 1 and 2 16 August – 15 November £63.60/£47.40 (conc.)
[12 weeks] *(excluding 27 September and 11 October)*

Term 3 [12 weeks] 10 January – 28 March £63.60/£47.40 (conc.)

Term 4 [8 weeks] 25 April – 20 June £42.20/£31.60 (conc.)
(excludes 2 May)

SL Lifestyles Carluke

Tuesday 10am – 11am

Term 1 [8 weeks] 17 August – 5 October

Term 2 [8 weeks] 19 October – 7 December

Term 3 [12 weeks] 11 January – 29 March

Term 4 [9 weeks] 19 April – 14 June

The Town House, Hamilton

Friday 10am – 11am

Term 1 [8 weeks]

20 August – 8 October

Term 2 [8 weeks]

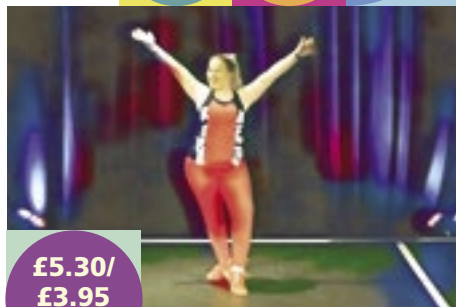
22 October – 10 December

Term 3 [12 weeks]

7 January – 25 March

Term 4 [8 weeks]

22 April – 17 June *(excludes 3 June)*



**£5.30/
£3.95
(conc.)**

Introduction to guitar

Your musical journey begins here – learn basic technique in a chilled environment. Whatever style you want to master or however far you want to take it, this is the best place to start. With small group tuition, you'll get enough personal guidance to make far more progress than you ever could with an instruction book or DVD – and you'll have a lot more fun!

The Town House, Hamilton

Tuesday 6pm – 7pm

Term 1 [8 weeks] **17 August – 5 October** £58.40/£32.80 (conc.)

Term 2 [8 weeks] **19 October – 7 December** £58.40/£32.80 (conc.)

Term 3 [12 weeks] **11 January – 29 March** £87.60/£49.20 (conc.)

Term 4 [9 weeks] **19 April – 14 June** £65.70/£36.90 (conc.)

Rutherglen Town Hall

Wednesday 6.30pm – 7.30pm

Term 1 [8 weeks] **18 August – 6 October** £58.40/£32.80 (conc.)

Term 2 [8 weeks] **20 October – 8 December** £58.40/£32.80 (conc.)

Term 3 [12 weeks] **5 January – 23 March** £87.60/£49.20 (conc.)

Term 4 [9 weeks] **20 April – 15 June** £65.70/£36.90 (conc.)



Stage one guitar

Now you have begun, it's time to speed up your journey. This course will build upon what you already know and open up a whole world of exciting options to gradually develop your guitar playing skills and musical knowledge. With a growing ability and confidence comes more enjoyment!

The Town House, Hamilton

Tuesday 7pm – 8pm

Term 1 [8 weeks] **17 August – 5 October** £58.40/£32.80 (conc.)

Term 2 [8 weeks] **19 October – 7 December** £58.40/£32.80 (conc.)

Term 3 [12 weeks] **11 January – 29 March** £87.60/£49.20 (conc.)

Term 4 [9 weeks] **19 April – 14 June** £65.70/£36.90 (conc.)

Rutherglen Town Hall

Wednesday 7.30pm – 8.30pm

Term 1 [8 weeks] **18 August – 6 October** £58.40/£32.80 (conc.)

Term 2 [8 weeks] **20 October – 8 December** £58.40/£32.80 (conc.)

Term 3 [12 weeks] **5 January – 23 March** £87.60/£40.20 (conc.)

Term 4 [9 weeks] **20 April – 15 June** £65.70/£36.90 (conc.)



Stage two guitar

Whether you are a sing-along strummer or heading for Glastonbury, you will always find new techniques and approaches that will maximise your guitar playing. This is the course for those with a bit of playing experience who want to hone their skills. With expert tuition in a small, friendly class, you can really ramp up your guitar playing potential!

The Town House, Hamilton

Tuesday 8pm – 9pm

Term 1 [8 weeks] **17 August – 5 October** £58.40/£32.80 (conc.)

Term 2 [8 weeks] **19 October – 7 December** £58.40/£32.80 (conc.)

Term 3 [12 weeks] **11 January – 29 March** £87.60/£49.20 (conc.)

Term 4 [9 weeks] **19 April – 14 June** £65.70/£36.90 (conc.)

Rutherglen Town Hall

Wednesday 7.30pm – 8.30pm

Term 1 [8 weeks] **18 August – 6 October** £58.40/£32.80 (conc.)

Term 2 [8 weeks] **20 October – 8 December** £58.40/£32.80 (conc.)

Term 3 [12 weeks] **5 January – 23 March** £87.60/£49.20 (conc.)

Term 4 [9 weeks] **20 April – 15 June** £65.70/£36.90 (conc.)



Acoustic guitar – improvers

East Kilbride Arts Centre

- Wednesday** **6.45pm – 7.45pm | 7.45pm – 8.45pm**
Term 1 and 2 **18 August – 10 November** £81.60/£42.00 (conc.)
 [12 weeks] (*excludes 13 October*)
- Term 3 [12 weeks] **5 January – 23 March** £81.60/£42.00 (conc.)
Term 4 [9 weeks] **20 April – 15 June** £61.20/£31.50 (conc.)
- Friday** **6.30pm – 7.30pm**
Term 1 and 2 **20 August – 12 November** £81.60/£42.00 (conc.)
 [12 weeks] (*excludes 15 October*)
- Term 3 [12 weeks] **7 January – 25 March** £81.60/£42.00 (conc.)
Term 4 [8 weeks] **22 April – 17 June** £55.60/£28.40 (conc.)
 (*excludes 3 June*)



New Media

Digital photography

Get off auto! This course will help you get the most of your digital camera. Week by week we'll move from composing shots to using creative auto modes then aperture priority for total control over your camera. Go from taking snaps to creating photographs.

East Kilbride Arts Centre

Tuesday	10.30am – noon 1pm – 2.30pm
Term 1 and 2 [12 weeks]	17 August – 9 November £88.20/51.60 (conc.) <i>(excludes 12 October)</i>
Term 3 [12 weeks]	11 January – 29 March £88.20/51.60 (conc.)
Term 4 [9 weeks]	19 April – 14 June £66.15/£38.70 (conc.)



Terms and Conditions



All courses, classes and sessions must be pre-booked and paid in full (unless stated otherwise) prior to the commencement of each course, class or session.



Bookings will be taken on a 'first come, first served' basis (unless stated otherwise).

Reduced rates are available for holders of a current SLLC 'Leisure for all' concession card. Please ensure your concession card is valid to beyond the start date of your chosen activity at the time of booking. Further information on eligibility can be found on the website or by calling 01698 476262.



SLLC cannot be held responsible for injury or loss of belongings sustained whilst participating in any course or session.



SLLC reserve the right to cancel/alter/relocate sessions without notice and will run subject to minimum numbers. In the event of an activity being cancelled we will take reasonable steps to notify participants. SLLC will not be held responsible for any travel, accommodation or other ancillary costs incurred by the participant.



Participants agree to abide by SLLC's Management Rules at all times. These are available to customers on request and/or are displayed within facilities and venues.



The unauthorised use of photographic and/or recording equipment is strictly prohibited.



Payments cannot be refunded except in circumstances where the course, class or session has been cancelled.



Special Access Requirements. Customers must inform the box office at the time of booking, of any ticket holders who require special access to the venue. (For example: wheelchair users, those who cannot use stairs etc).

Medical information



Please provide details of any medical conditions that we would need to be aware of. Providing this information enables SLLC to provide the best service and/or adapt classes to support the needs of participants.

How to Book

For new customers please contact the booking offices at **Hamilton Town House, East Kilbride Arts Centre, Rutherglen Town Hall** or **Lanark Memorial Hall** for availability on our classes and courses.

Please note that all courses must be booked in advance and that workshops/classes will only run if sufficient numbers enrol.

Payment methods

Payments can be made in cash/by credit/debit card or cheque. Cheques should be made payable to South Lanarkshire Leisure and Culture Ltd.

Concessions

The following groups are eligible for concessionary ticket prices: Holders of South Lanarkshire Leisure and Culture 'Leisure For All' concession cards'. Other concessions may be available – please see venue for details.

Please note that proof of concession status is required at:



East Kilbride Arts Centre

Old Coach Road
East Kilbride
G74 4DU
Phone 01355 261000



Lanark Memorial Hall

St Leonard Street
Lanark
ML11 7AB
Phone: 01555 667999



The Town House

102 Cadzow Street
Hamilton
ML3 6HH
Phone: 01698 452 299



Rutherglen Town Hall

139 Main Street
Rutherglen
G73 2JJ
Phone 0141 613 5700

Other venues



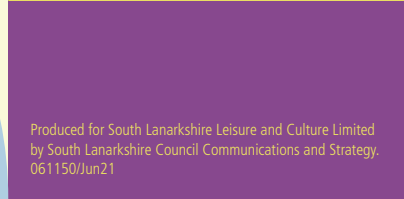
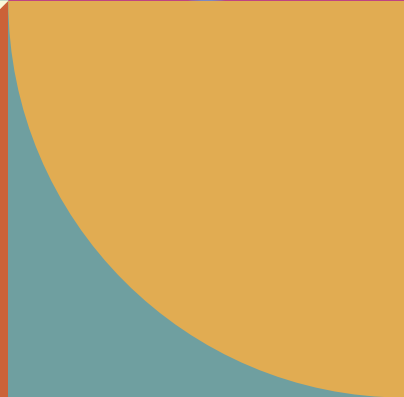
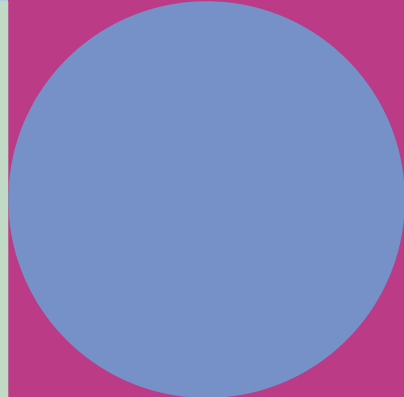
SL Lifestyles Carluke

Carnwath Road, Carluke ML8 4DR



Lanark Grammar School

Kirklands Road, Lanark ML11 9AJ



Produced for South Lanarkshire Leisure and Culture Limited
by South Lanarkshire Council Communications and Strategy.
061150/Jun21



SOUTH LANARKSHIRE
Leisure & Culture

www.slleisureandculture.co.uk

If you need this information in another language or format, please contact us to discuss how we can best meet your needs. Phone: **01698 476262**

Text phone: **18001 01698 476262**

Email: customer.services@southlanarkshireleisure.co.uk

South Lanarkshire Leisure and Culture Limited is a recognised Scottish Charity, No. SCO32549

