

# Chat about Childcare

## Welcome to the December edition of Chat about Childcare

This has been another busy term for many of our services, and I know that many of you will be enjoying the Christmas celebrations of parties, nativities and concerts.

In this edition some of you have shared the events, activities and experiences that you have been part of this autumn. We are always interested in hearing from you and sharing your practice, so please get in touch and tell us your story.

We have given you some information on upcoming events over the next year, and ideas to help you plan experiences for the children that you're working with.

I hope you enjoy this edition and share it with colleagues, parents and friends.

I would like to take this opportunity to wish you all a Merry Christmas and a very happy 2016.

*Jean E. McKeown*

Councillor Jean McKeown  
Chair, South Lanarkshire Early Years and  
Childcare Partnership

If you need this information in another language or format, please contact us to discuss how we can best meet your needs. Phone: 0303 123 1015  
Email: [equalities@southlanarkshire.gov.uk](mailto:equalities@southlanarkshire.gov.uk)

[www.southlanarkshire.gov.uk](http://www.southlanarkshire.gov.uk)

## *"On parles francais!" at Crosshouse Nursery*

Children at Crosshouse Primary School and Nursery Class in East Kilbride are starting young to learn French. Pre school nursery and Primary One children come together twice a week to learn greetings, numbers, colours, days of the week, weather and what it's like to go to school in France. They are learning language through songs, rhymes, active games and inter active programmes using ICT.

The school has introduced a "French Day" to their annual events calendar and this has proved a great success. Every class in the school, from nursery to P7 took part and experienced many different activities, including a visit to le café du Croix maison to sample some French delicacies.

Crosshouse – *"C'est formidable!!"*

For further information, please contact  
Crosshouse nursery on 01355 245300.



Issue 16  
December 2015





"I'm an  
ACE baby"

We have listened  
to your feedback  
and reduced the  
cost of our baby  
yoga, toddler  
yoga and 'Go!  
Play' sessions.



Now £2.90 per session (£1.45  
concession) or **FREE with an ACE  
membership.**





# Crawforddyke Nursery Class

After consultation with children parents/carers our outdoor area has been greatly developed using the time and skills of parents and the local community. Children have the opportunity to develop their language, maths, science and social skills across all areas of outdoor learning.

Our mud kitchen encourages children to explore and use their senses with mud, sand and a selection natural of resources to create some culinary delights and recipes.

Children are active in their learning outdoors in our wild flower and fairy garden. They will be taking ownership along with parents and carers to maintain and look after this area.

**For further information, please contact  
Crawforddyke Nursery Class on 01555 771215.**





# Indoor and Outdoor Nature Activities

## Woodland Badge

When you are out in the woods with your little one, why not make a woodland badge?

- Make a mini memento of your journey
- Name each item as you thread it onto the string, and let your Nature Detective hold them
- How many different items will you find?

When you get home, make a natural mobile using the items you find.

## Leaf Collecting

Choose leaves of different shapes, sizes, colours and textures. Are they rough, smooth, prickly?

Collect the leaves together and make a collage. You can also make a leafy crown. Try collecting fallen petals in the spring and summer months and make your own flowers.

## Hedgerow Hunt

Search among the leaves, grass and brambles, use your senses, what can you hear, see, touch and smell? Does anything else make their home in the hedgerows?

Go hunting on a frosty morning and spot glittering spider webs in the hedgerows.

## Create a spooky nature scene

Black paper is great for creating super contrasts and sparkly pictures. Use chalk, glitter and bright paints to make a night time scene. Try materials like leaves and abandoned spider webs to create a spooky collage.

## Twig Hunt Adventure

Look for twigs on the ground. Can you find twigs that birds might use to build their nests. Try finding your favourite twigs and collect them all together, what will you make from them?



## Caterpillar Hunt

Go on a caterpillar hunt and see how many you can spot. Look under leaves and on plant stems to spot caterpillars. Make sure you don't touch or pick up caterpillars as they can be very delicate, and they can also make your skin itch.

## Sound Safari

Nature is noisy. Find a quiet spot, stand still and listen carefully. What can you hear? Tweeting, squelching, shuffling, rustling and buzzing?

Can you hear insects, birds and trees?

## Mini Beast Mansion

Find a good spot where all sorts of creatures might like to live. Some like dark, damp places, and some prefer bright and sunny spots. Gather sticks, moss, leaves, bark and other woodland items together and start building a home for mini beasts.

## Match the Track

Look out for foot prints in soft ground. It's best to spot tracks in snow or after a rain shower. An information sheet showing tracks to look out for can be downloaded from the Woodland Trust Website:

[www.woodlandtrust.org.uk/naturedetectives/](http://www.woodlandtrust.org.uk/naturedetectives/)



## Winter poem...

### Chubby Snowman

There was a chubby snowman

And he had a carrot nose  
(put fist to nose like carrot)

Along came a bunny  
(2 fingers up for ears)

And what do you suppose  
(hands on hips)

The hungry little bunny  
(rub tummy)

Was looking for his lunch  
(hand to forehead, looking)

He grabbed that  
snowman's carrot nose

Nibble! Nibble! Crunch!!  
(pretend to eat carrot)

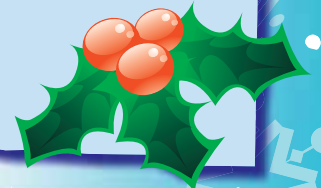


## Winter Events

Pantomimes, Santa's Grottos, gift shops and much more are just some of the events available within South Lanarkshire Leisure and Culture's vast array of events.

South Lanarkshire Leisure and Culture always bring something special to the festive period and this year is no different, find out what winter events are happening in South Lanarkshire's local Libraries, Museums and Country Parks.

[www.slleisureandculture.co.uk/events/](http://www.slleisureandculture.co.uk/events/)



## Christmas School Holidays

Just a reminder that schools finish up for the Christmas holidays on Wednesday 23rd December 2015 at 2.30pm and re-open on Tuesday 5th January 2016.

## Outdoors in Winter

Looking for opportunities to get out and about this winter?

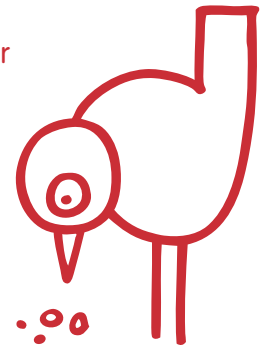
Check out the different activities / groups and places throughout the year, [www.elament.org.uk/greenspace.aspx](http://www.elament.org.uk/greenspace.aspx)

The web portal gives information on different play parks and Country Parks in both North and South Lanarkshire. Being outdoors is a great excuse to get wrapped up and explore the different sensory and visual wintry delights that nature has to offer!

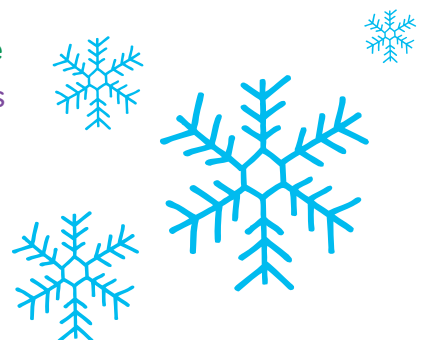


# 30 things to do **DURING WINTER** before you're 3

- 1. Make a sock puppet
- 2. Draw and colour a saltire on St Andrew's Day – the 30th November
- 3. Drop sticks in the river and watch them float down stream
- 4. Use your fingers to draw a picture in condensation on a window
- 5. Help mum and dad make chocolate apples (or another fruit), and get messy eating them afterwards!
- 6. Kick up colourful fallen leaves
- 7. Snuggle under a blanket for bedtime stories
- 8. Make a pompom
- 9. Eat a marshmallow toasted by mum or dad
- 10. Collect sticks and make a stick man
- 11. Go **singing in the rain**
- 12. Make an egg head - plant cress seeds in egg shells, draw on a cheeky face and watch it grow green hair
- 13. Help mum or dad bake biscuits
- 14. Tuck into a bowl of warming winter soup
- 15. See your breath on a cold winter morning
- 16. Turn an unused glove into a cuddly, little bear
- 17. Spot a red robin
- 18. Dig out your wellies, jump in a puddle and make a splash!
- 19. Get **playful in the bath** with soap and suds
- 20. Get messy **making fingertip paintings** of your family
- 21. Go on a **'hot or cold' treasure hunt** inside your house
- 22. Make a snowflake
- 23. Feed the ducks
- 24. Turn on some tunes and have a baby disco indoors with mum and dad
- 25. Spot a **twinkly star** in the sky
- 26. Have fun on a windy day **waving a ribbon** in the breeze
- 27. Play dress up trying on mum or dad's clothes and shoes
- 28. Get creative making a **newspaper hat**
- 29. Have some good old-fashioned fun playing hop scotch in the garden with mum and dad
- 30. Make a noise like an owl – "twit twoo"



Stick me on the fridge!



To find out more visit  
[www.playtalkread.org](http://www.playtalkread.org)





# Nativity Word Search

k	s	b	c	a	n	g	e	l	u
i	m	a	n	g	e	r	j	k	t
n	y	d	r	e	h	p	e	h	s
g	g	e	p	s	v	m	j	u	u
s	v	r	k	g	u	o	d	i	x
r	c	a	g	n	s	s	b	f	u
b	t	t	i	e	o	x	e	k	v
a	z	s	p	h	j	d	u	j	x
d	v	h	l	m	a	r	y	o	p
s	r	s	t	a	b	l	e	n	l



- angel
- Jesus
- kings
- Mary
- stable
- donkey
- Joseph
- manger
- shepherd
- star





# YEAR OF THE DAD

## FACTSHEET

Organised by Fathers Network  
Scotland with support  
from the Scottish Government

### What is Year of the Dad?

A year of celebration, insight and collaboration to promote the importance of fathers in child development and support men to be the dads they want to be.

### How are we going to achieve this?

- Foster understanding of the key contribution fathers make to child development, family and community life.
- Increase awareness of the organisational benefits in acknowledging men's family roles.
- Advance father-friendly practice within organisations and their services.

### Why is it important?

Research overwhelmingly shows that children, women and families benefit from the positive involvement of fathers.

Valuing and supporting dads brings business benefits of increased engagement and a healthier work-life balance – which means more motivated and efficient workers.

Recent legislation – including the right to request flexible working and shared parental leave – means forward-thinking organisations are embracing new working patterns for men.

Promoting equality for fathers as parents at work and at home simultaneously helps to advance equality for women by decreasing the pay gap and creating more options for women to work and care.

### Where do I sign up?

Sign up at [www.fathersnetwork.org.uk](http://www.fathersnetwork.org.uk)  
Follow us on Twitter  
Find us on Facebook





## How can I/my organisation get involved?

Join this new wave of mums, dads, practitioners and employers as we drive a shift in 21st century parenting and work culture that will benefit business, families and communities alike.

- Sign up to the charter for dads and commit your support either as an employer, service provider or individual.
- Adopt father friendly practice, challenge ingrained myths about dads and tap into the win-win of shared parenting at home and in the workplace.
- Register online for regular Year of the Dad updates and show your support by downloading our digital supporters' badge.
- Network with others in the growing Year of the Dad community and be visible as an early adopter in a high-profile national campaign.
- Let us know how we can help you celebrate Year of the Dad, share your best-practice stories and promote the importance of fathers.

*Together we can help make Scotland  
the best place in the  
world for children to grow up!*

[yearofthedad.org](http://yearofthedad.org)

Twitter @yearofthedad #yearofthedad

Book at [www.facebook.com/yearofthedad](http://www.facebook.com/yearofthedad)

## Childminders Go2Play

A beautiful Thursday morning saw childminders from Clydesdale Childminding Group make a visit to Castlebank Park in Lanark.

The childminders and children were there to participate in Outdoor play training. The childminders had previously attended a theory based session a few weeks earlier and now it was time to put knowledge into practice with the little ones in tow.

Thankfully it was a gorgeous day and Castlebank has a beautiful Fairy garden. It didn't take the group long to get on with the job in hand. Firstly a scavenger hunt to find lots of different items. Then the children and grown-ups made bird feeders, then it was build a den where we had our snack, climbing trees and last but not least some of us got a little wet with our tarpaulin activities.

A great morning was had by all and everyone said that it certainly made them think more about the activities they can do outdoors even with the little ones.

New dates are now being arranged so that other groups of childminders and children can be involved with the activities.

For further information, please contact Lorna Carlyle on [lorna.carlyle@childminding.org](mailto:lorna.carlyle@childminding.org)



# Reindeer Word Search

o	w	j	p	a	n	e	z	t	i	l	b
u	a	w	r	w	h	c	p	r	k	n	m
t	o	s	c	e	z	k	e	y	d	b	z
e	d	t	d	l	e	c	u	i	r	m	l
m	a	o	e	u	n	d	p	k	t	c	r
o	s	x	i	a	u	u	n	w	k	j	e
c	h	y	r	m	c	t	k	i	q	a	n
e	e	p	j	y	x	s	r	j	e	e	n
l	r	j	d	h	p	l	o	d	u	r	o
v	k	v	i	x	e	n	v	e	v	i	d
x	y	r	e	c	n	a	d	d	a	t	s
j	r	a	v	w	j	d	v	x	n	p	b

Blitzen  
Dancer  
Prancer  
Rudolph

Comet  
Dasher  
reindeer  
Vixen

Cupid  
Donner





# Supporting early years improvement with the Early Years Collaborative

South Lanarkshire Council has played an active role in the Early Years Collaborative (EYC) since it was launched in January 2013. It has set itself the aim of "making Scotland the best place in the world to grow up". It intends to achieve this aim by supporting services working in early years to use a specific improvement approach (the Model for Improvement or Improvement Science) to support improvement activity.

Over the last two years, South Lanarkshire's early years establishments have been involved in a number of pieces of work which have used the Model for Improvement. These have included:

- **St Paul's Nursery** – Splash! A swimming programme aimed at two and three year olds which has improved relationships between parents and children as well as increasing physical activity. **St Mary's Nursery, Lanark** have also started their own Splash! Programme based on St Paul's learning
- **Woodlands Nursery** has explored new processes to support the way they observe children and support achievement of individual outcomes
- **First Steps Nursery and St Pauls** have both been looking at ways of encouraging more involvement in the nursery by Dads and father figures
- **Happy Feet and Westburn** have been working with Speech and Language Therapy (NHS Lanarkshire) and Educational Psychology to support staff to identify children with speech and language delay and put effective interventions in place

We have now started a small group to support nursery staff who are interested in using this improvement approach. We had our first meeting on Tuesday 20th October attended by staff from four establishments, and another three have expressed interest in taking part in future group meetings. Some of these, like Machanhill Nursery, are using the model for the first time. We will use these groups to build skills and knowledge in using the model for improvement, and sharing our learning from the pieces of work we do when back at base.

If you want to know more, please contact Michele Dowling, Early Years Collaborative Manager, [michele.dowling@southlanarkshire.gcsx.gov.uk](mailto:michele.dowling@southlanarkshire.gcsx.gov.uk) or on 01698 452238.





# Calendar of notable dates 2016

Here is a list of notable dates and events celebrated around the world in 2016. It may give you some inspiration for topics to explore with your children.

Date	Event
1st January	New Year
18th January	Martin Luther King Day
25th January	Burns Night
26th January	Australia Day
2nd February	Groundhog Day
6th February	Waitangi Day (New Zealand Day)
7th February	Charles Dickens' Birthday
8th February	Chinese New Year (Year of the Monkey)
9th February	Pancake Day
9th February	Mardi Gras
14th February	Valentine's Day
15th February	National Flag of Canada Day
15th February	Presidents' Day
22nd February	World Thinking Day
1st March	St David's Day
2nd March	Dr Seuss's Birthday
3rd March	World Book Day
14th March	Commonwealth Day
6th March	Mother's Day (UK)
14th – 23rd March	Shakespeare Week
17th March	St Patrick's Day
23rd March	Holi
27th March	Easter
22nd April	Earth Day
23rd April	St George's Day

Date	Event
2nd – 6th May	Teacher Appreciation Week (US)
3rd May	Teacher Appreciation Day (US)
5th May 2016	Children's Day (Japan)
9th to 13th May (tbc)	Sun Awareness Week
19th June	Father's Day
1st July	Canada Day
4th July	Fourth of July (US)
5th July	Eid al-Fitr
15th August	Back to School for children
4th September	Father's Day (Australia and New Zealand)
10th – 11th September	Eid al-Adha
11th September	Grandparent's Day (US)
13th September	Roald Dahl Day
21st September	Peace Day
September / October	Harvest Festival
30th October 2016	Diwali
31st October	Halloween
5th November	Bonfire Night
13th November	Remembrance Sunday
24th November	Thanksgiving
30th November	St Andrew's Day
1st December	Advent
25th December	Christmas







# Christmas Word Search

j	b	v	s	w	z	s	o	s	a	l	z	g	o	z	n
q	m	h	a	a	h	c	w	i	z	n	u	m	k	q	a
q	z	s	a	s	n	o	w	m	a	n	a	c	c	n	d
i	w	l	b	n	b	t	j	t	d	k	c	i	n	a	m
j	d	j	l	o	e	k	a	c	h	p	o	m	w	g	f
h	a	b	z	i	e	c	n	c	q	g	b	v	w	t	k
p	e	v	n	t	h	y	g	b	l	f	n	s	p	g	v
r	r	c	e	a	l	v	q	j	z	a	z	t	d	o	r
b	b	j	a	r	s	l	q	x	l	u	u	b	u	g	t
y	r	z	r	o	v	t	c	v	n	x	w	s	m	i	v
k	e	c	l	c	l	j	o	z	p	o	q	x	r	f	i
n	g	j	z	e	e	p	k	c	q	s	l	v	m	t	g
a	n	k	i	d	e	u	y	b	k	n	l	o	v	z	v
q	i	t	z	u	r	q	m	n	r	i	z	d	r	c	h
f	g	l	l	z	t	g	q	z	a	c	n	t	b	h	w
o	c	e	r	e	i	n	d	e	e	r	i	g	k	c	i



stocking  
gift  
tree

Santa Clause  
cake  
reindeer

snowman  
decorations  
gingerbread



# Have you heard about the SSSC Learning Zone?



Scottish Social  
Services Council

SSSC are trying to get people to think differently about learning and development and using mobile technology as a platform. The apps they've developed are a part of that. Whatever your role and level of experience, the SSSC Learning Zone has apps and resources to help you develop your knowledge and skills. You can work through the resources at your own pace and use them to contribute towards your recorded learning and development.

Some examples of what you can tap into are:

## *Engaging with Children*

Explore what you need to know and be able to do so that you can engage effectively with children and young people. This includes case studies and a mix of activities.

## *Childhood Practice simulator*

The interactive simulation gives you the opportunity to acquire and apply the knowledge and skills that you are developing as you work towards the Childhood Practice Award. The simulator will confront you with a challenging scenario, enabling you to rehearse the skills required in real-world situations, but with the added benefit that mistakes made here will not have real-world consequences.

## *Practitioner Research*

A selection of research undertaken by practitioners on the BA in Childhood Practice; research linked to Scottish Government Policy such as GIRFEC; The Early Years Framework; A Curriculum for Excellence; and Equally Well.

- The Gender Agenda
- How can we Promote Boys Achievements in Literacy
- L is for Language
- Respecting Me
- Emotional Intelligence
- Health Promotion is it having an impact
- Managing a Workplace Project
- Inclusion or an Illusion
- Self Assessment in the Early Years
- Creating a Space for our Youngest Children: The Under Threes at Nursery
- Mathematics In The Early Years
- Leading Effective Collaborative Practice

## *Safe Administration of Medication (SafeMed)*

These resources are designed to support you whilst carrying out your day to day duties with the public. You'll find them useful if you're preparing for assessment for a SVQ in Social Service and Healthcare (e.g. "Administer Medication to Individuals") or the Professional Development Award, "Administration of Medication".

## *Jargon and Acronym Buster (JAB)*

Web based resource

Why not give it a try on the SSSC website:  
[www.sssc.uk.com/workforce-development](http://www.sssc.uk.com/workforce-development)  
then click on to the Learning Zone.



# 30 things to do **AT CHRISTMAS** before you're 3

- 1. Leave a carrot for Rudolph and a biscuit or a mince pie out for Santa on Christmas Eve
- 2. Write your Christmas list to Santa with help from mum or dad
- 3. Learn the words to Jingle Bells
- 4. Make your own **Christmas stocking** with the help of mum or dad and hang it on the end of your bed
- 5. Make a snow globe – shake to watch it sparkle
- 6. Help mum or dad put the star or fairy on the top of the Christmas tree
- 7. Make your own **Reindeer hat**
- 8. Count sparkly Christmas trees in windows
- 9. Make **paper snowflake decorations**
- 10. Learn the names for all of Santa's reindeer
- 11. See your reflection in a Christmas bauble
- 12. Get messy making salt dough ornaments for the Christmas tree
- 13. Use face paints or make up to give yourself **a red nose like Rudolph**
- 14. Make **a paper plate snowman**
- 15. Play indoors with **sock snowballs**
- 16. Make paper chain decorations with mum or dad
- 17. Pretend you're Santa's little helper and help mum or dad wrap presents
- 18. Make your own **Christmas cracker** with mum or dad
- 19. Go for a winter walk to find pinecones – when you get home dip them in glue and glitter to make glitzy decorations
- 20. Sprinkle icing sugar or talcum over your feet and step away to leave white footprints like Santa
- 21. Get creative and make your own **finger painted Christmas cards** with help from mum or dad
- 22. Chuckle 'Ho ho ho' like Santa
- 23. Use a cardboard box to make your own sleigh like Santa's
- 24. Have fun at bath time and use the bubbles to make Santa's beard
- 25. Tickle your toes with tinsel
- 26. Sticky tape tinsel to the wall to hang your Christmas cards with help from mum or dad
- 27. Snuggle under a blanket to hear a story
- 28. Make a **footprint Robin**
- 29. Turn oranges into **mini snowmen**
- 30. Sing along to the 12 days of Christmas



**Stick me on the fridge!**



To find out more visit  
[www.playtalkread.org](http://www.playtalkread.org)



# Directory of contacts

Here is a list, of people, services and organisations that may be useful to your service. The list is by no means exhaustive!

## Early Years Service

### South Lanarkshire Council Early Years Service

01698 454470

[earlyyears@southlanarkshire.gov.uk](mailto:earlyyears@southlanarkshire.gov.uk)

### South Lanarkshire Childcare Information Service

01698 454470

[earlyyears@southlanarkshire.gov.uk](mailto:earlyyears@southlanarkshire.gov.uk)

### Morag McDonald, Early Years Strategic Manager

01698 454474

[morag.mcdonald@southlanarkshire.gov.uk](mailto:morag.mcdonald@southlanarkshire.gov.uk)

### Allan McRitchie, Early Years Manager (Curriculum)

01698 454285

[allan.mcritchie@southlanarkshire.gov.uk](mailto:allan.mcritchie@southlanarkshire.gov.uk)

### Helen Hodge, OOSC Development Officer

01698 455675

[helen.hodge@southlanarkshire.gov.uk](mailto:helen.hodge@southlanarkshire.gov.uk)

### Early Learning and Childcare Support Team

01698 455675 (Marion, Vivienne, Ruth, Liz, Elaine, Janice, Andrea, Helen)

## Integrating Children's Services

### Kathleen Colvan, Service Manager, ICS and CCLD

01698 454517

[kathleen.colvan@southlanarkshire.gov.uk](mailto:kathleen.colvan@southlanarkshire.gov.uk)

### Debra Lindsay, Hamilton ICS Area Manager

01698 452370

[debra.lindsay@southlanarkshire.gov.uk](mailto:debra.lindsay@southlanarkshire.gov.uk)

### Val McIntyre, East Kilbride ICS Area Manager

01355 235702

[val.mcintyre@ics.s-lanark.org.uk](mailto:val.mcintyre@ics.s-lanark.org.uk)

### Kevin Mullarkey, Clydesdale ICS Area Manager

01555 895192

[kevin.mullarkey@southlanarkshire.gov.uk](mailto:kevin.mullarkey@southlanarkshire.gov.uk)

### Elaine Walker, Cambuslang/Rutherglen (ICS Area Manager)

0141 630 2520

[elaine.walker@southlanarkshire.gov.uk](mailto:elaine.walker@southlanarkshire.gov.uk)

### Jennifer McCormick, Early Years Manager (Development)

01698 454973

[jennifer.mccormick@southlanarkshire.gov.uk](mailto:jennifer.mccormick@southlanarkshire.gov.uk)

### Ellen Ward, Training and Development Officer

01698 455660

[ellen.ward@southlanarkshire.gov.uk](mailto:ellen.ward@southlanarkshire.gov.uk)

### Pauline Stanton, SVQ Lead Assessor

01698 455660

[pauline.stanton@southlanarkshire.gov.uk](mailto:pauline.stanton@southlanarkshire.gov.uk)

## Early Years and Childcare Training and Development Team

01698 455660 (Ellen, Pauline, Janice, Lesley)

## Community Learning/Home School Partnership/ Cultural Co-ordinators/Mobile Crèche

### Fiona Robertson, Senior CLHS Worker

01698 452214

[fiona.robertson@southlanarkshire.gov.uk](mailto:fiona.robertson@southlanarkshire.gov.uk)

### Doreen Jenkins, Senior CLHS Worker

01698 452395

[doreen.jenkins@southlanarkshire.gov.uk](mailto:doreen.jenkins@southlanarkshire.gov.uk)

### Susan Sandilands, Senior CLHS Worker

01357 528719

[susan.sandilands@southlanarkshire.gov.uk](mailto:susan.sandilands@southlanarkshire.gov.uk)

### Lianne Grieve, Senior CLHS Worker

0141 630 2520

[lianne.grieve@southlanarkshire.gov.uk](mailto:lianne.grieve@southlanarkshire.gov.uk)

## Cultural Co-ordinator Team

0141 630 2520 (Claire, Kimberly, Louise)

## Anne Brodie, Creche Officer

## South Lanarkshire Mobile Crèche

01698 452180

[ann.brodie@southlanarkshire.gov.uk](mailto:ann.brodie@southlanarkshire.gov.uk)

## Other Useful Contacts

### Support for Play and Early Learning in Lanarkshire (SPELL)

01698 768933

[spell.org@btopenworld.com](mailto:spell.org@btopenworld.com)

### Lorna Carlyle, Childminding Development Officer

01698 832076

[lorna.carlyle@childminding.org](mailto:lorna.carlyle@childminding.org)

### Hazel Rankine, National Day Nurseries Association

### (NDNA representative for South Lanarkshire)

01698 306090

[office@bigbirdlarkhall.co.uk](mailto:office@bigbirdlarkhall.co.uk)

### Kim Kilgannon, Play Development Officer, Leisure

01698 476195

[kim.kilgannon@southlanarkshireleisure.co.uk](mailto:kim.kilgannon@southlanarkshireleisure.co.uk)

### Care Inspectorate, Hamilton Office

01698 208150

[enquiries@careinspectorate.com](mailto:enquiries@careinspectorate.com)

[www.scswis.com](http://www.scswis.com)

### Scottish Social Services Council

0845 603 0891

[enquiries@sssc.uk.com](mailto:enquiries@sssc.uk.com)

[www.sssc.uk.com](http://www.sssc.uk.com)

