

South Lanarkshire Local Development Plan Main Issues Report



2017



Technical Report 1 Potential Changes to Designations and Settlement Boundaries

TECHNICAL REPORT 1

Potential Changes to Designations and Technical Changes

1. Introduction

- 1.1 Preparation of the Main Issues Report (MIR) for the South Lanarkshire Local Development Plan 2 (SLLDP2) involved the assessment of settlement boundaries and designations to ensure that these were robust and designations relevant.

2. Additions to Settlement Boundaries

- 2.1 Across South Lanarkshire all of the settlements were considered to ensure that the settlement boundary was amended to reflect any changes as a result of the granting of planning permission. Generally these are small alternations to the settlement boundary for a limited development such as a few houses or for a small rural primary school.
- 2.2 In some cases the opportunity has been taken to round off the settlement boundary to make a more sensible settlement pattern.
 1. Auchengray at primary school
 2. Blantyre at Shott Farm
 3. Boghead at Lesmahagow Road
 4. Bothwell at Clyde Avenue
 5. Carluke at Bushelhead Road
 6. Cartland at Cartland Mains
 7. Crossford at Holm Road
 8. Ferniegair at Allanton Terrace
 9. Glassford (4 additions)
 10. Hawksland at Greenrigg Road
 11. Kilncadzow (2 additions)
 12. Lamington at primary school
 13. Newbigging at Dunsyre Road
 14. Newtown of Covington
 15. Ravenstruther at Lanark Road
 16. Sandford at Springside
 17. Strathaven at Strathaven West (2 additions)
 18. Thankerton at Station Road
 19. Law at Waterlands Road
 20. Wiston (2 additions)
 21. Yieldshields west of B7056

3. Deletions to Settlement Boundaries

- 3.1 There were a few cases where the boundary of a proposed development was altered during the planning application process. This resulted in development boundaries not matching settlement boundaries shown in the adopted Local Development Plan. In these cases the settlement boundary has been amended to reflect the approved development area.
 1. Lesmahagow at Milton Farm
 2. Nemphlar
 3. Strathaven at Strathaven West

4. Designation Changes

4.1 As a result of planning consents a number of designations in the adopted local development plan require to be changed. These are generally small scale such as an extension to a neighbourhood centre or a change of use from retail to general urban.

1. St James Centre East Kilbride – core industrial area to neighbourhood centre
2. Hillhouse Neighbourhood Centre Hamilton – neighbourhood centre to housing site
3. Shieldhill Road Carluke – out of centre retail to general urban

5. Changes to Green Network and Greenspace

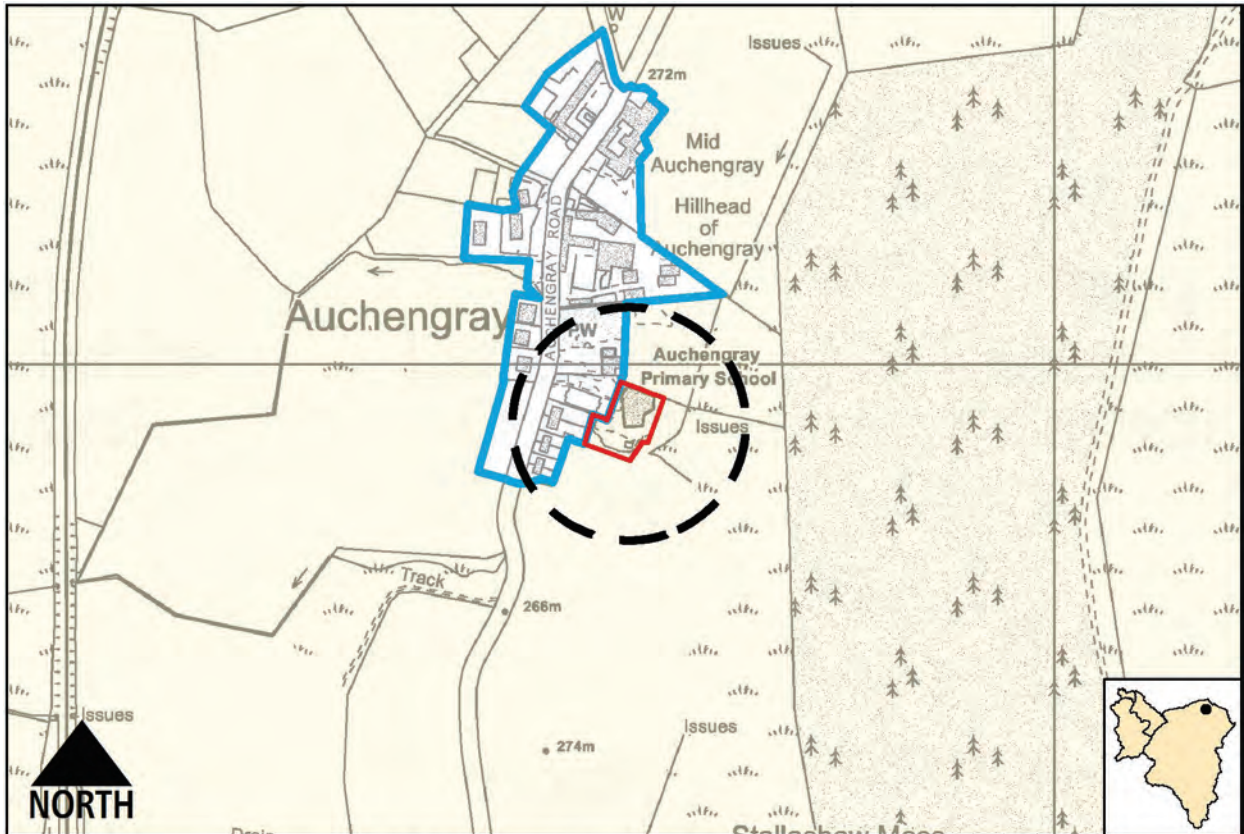
5.1 There are some changes that require to be made to the green network and greenspace areas shown on the proposals maps. The majority of these are due to planning consents being implemented which involves the loss of greenspace. In some cases the green network designation is retained even although the priority greenspace is no longer designated.

1. Deletion of priority greenspace designation
 - Old Mill Road Bothwell
 - Lanark Road Carluke
 - Whistleberry Industrial Park Blantyre
2. Deletion of priority greenspace and green network designation
 - Stewartfield Farm East Kilbride
 - Whitemoss Grove East Kilbride
 - Whistleberry Industrial Park (off Whistleberry Crescent) Blantyre
 - St Pauls Primary, Abbotsford Road Blantyre
 - Broompark Road, Blantyre
3. Deletion of Green Network
 - Scotia Crescent Larkhall

5.2 There are also a small number of additions to green network and greenspace designations to reflect opportunities to enhance and strengthen the green network resources in these locations.

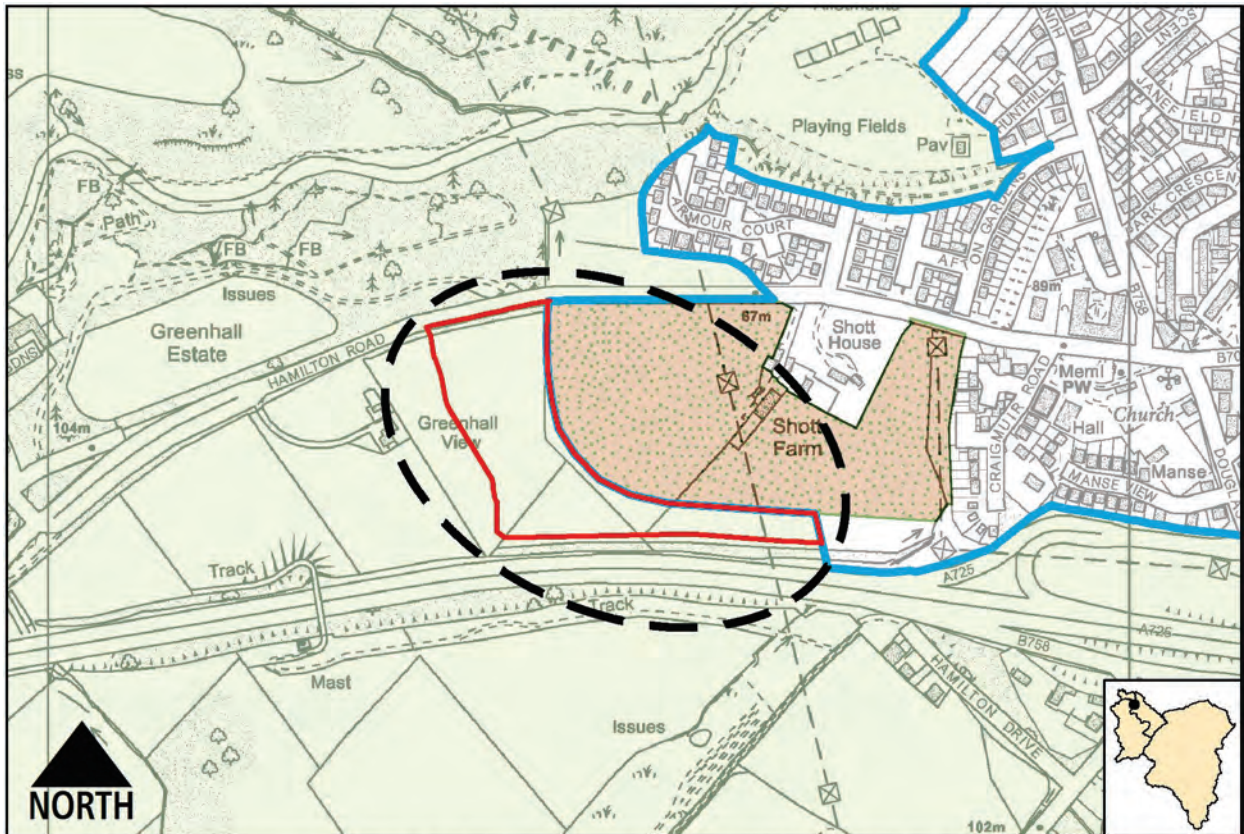
4. Additions to green network and greenspace
 - Avon Road Larkhall – green network
 - Whistleberry Industrial Park off Whistleberry Crescent Blantyre – priority greenspace
 - Nerston – priority greenspace

Additions to Settlement Boundaries



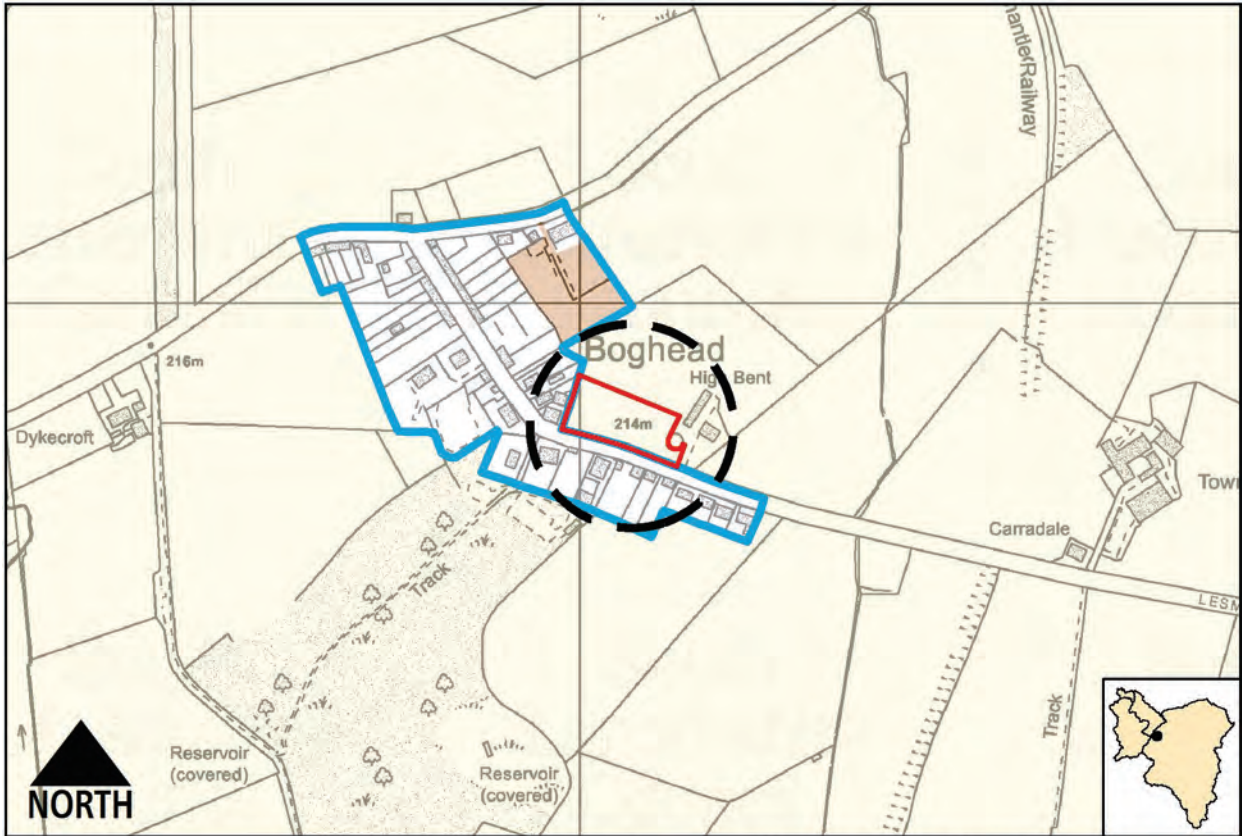
Map not to scale. © Crown copyright and database rights 2016. Ordnance Survey 100020730

1. Primary School, Auchengray



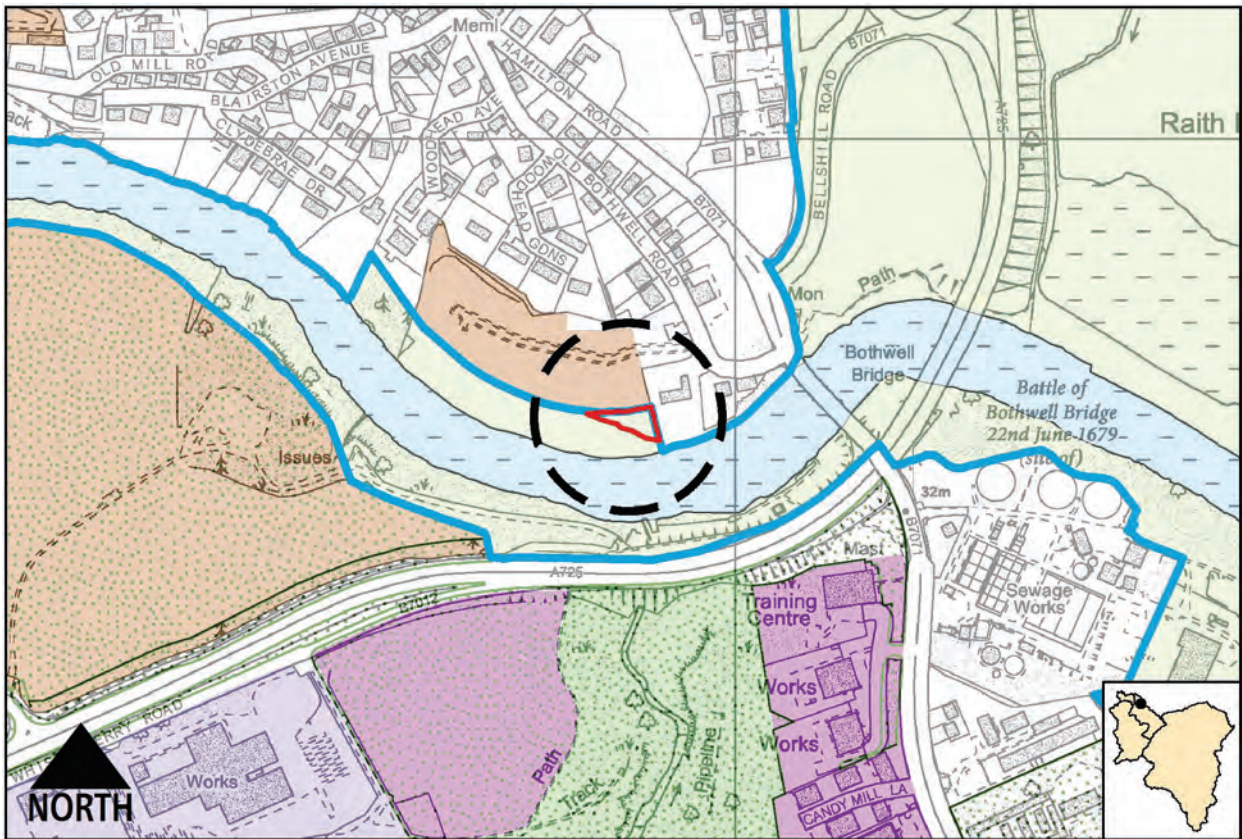
Map not to scale. © Crown copyright and database rights 2016. Ordnance Survey 100020730

2. Shott Farm, Blantyre



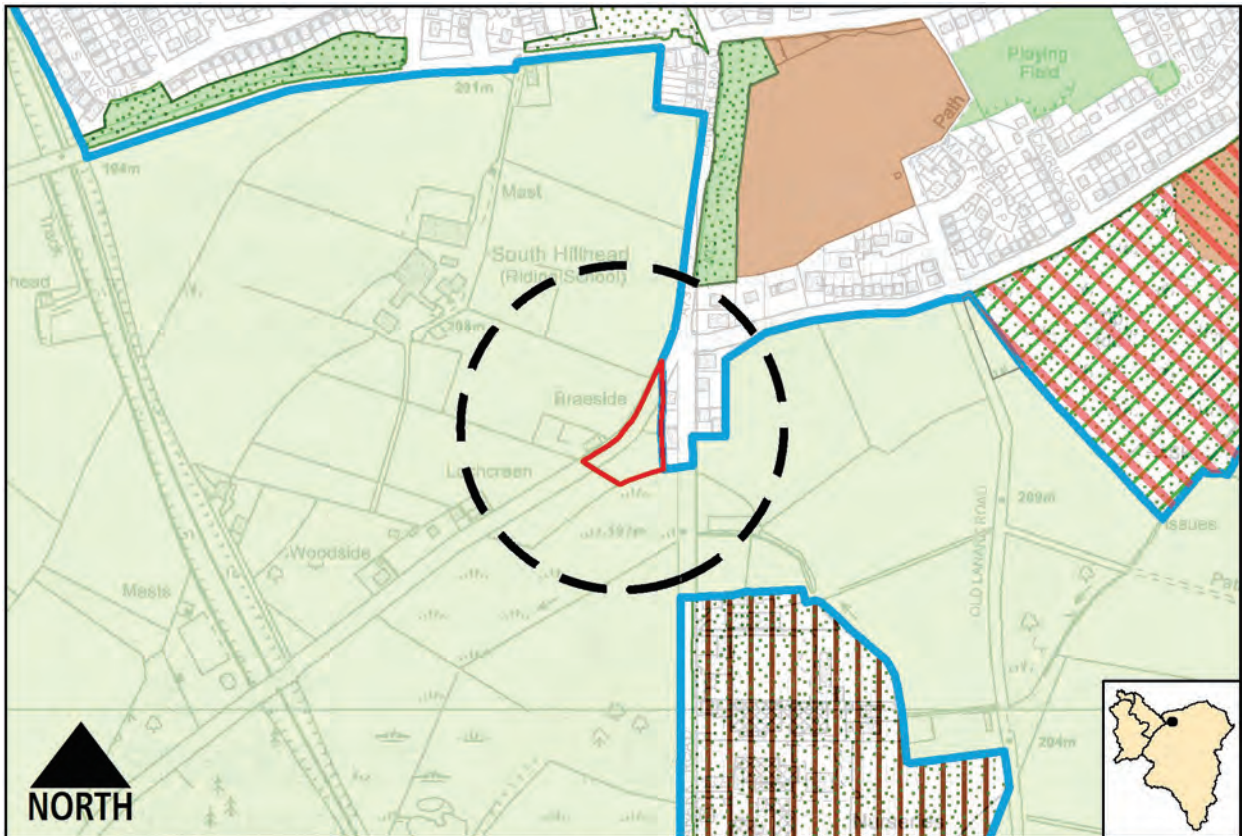
Map not to scale. © Crown copyright and database rights 2016. Ordnance Survey 100020730

3. Lesmahagow Road, Boghead



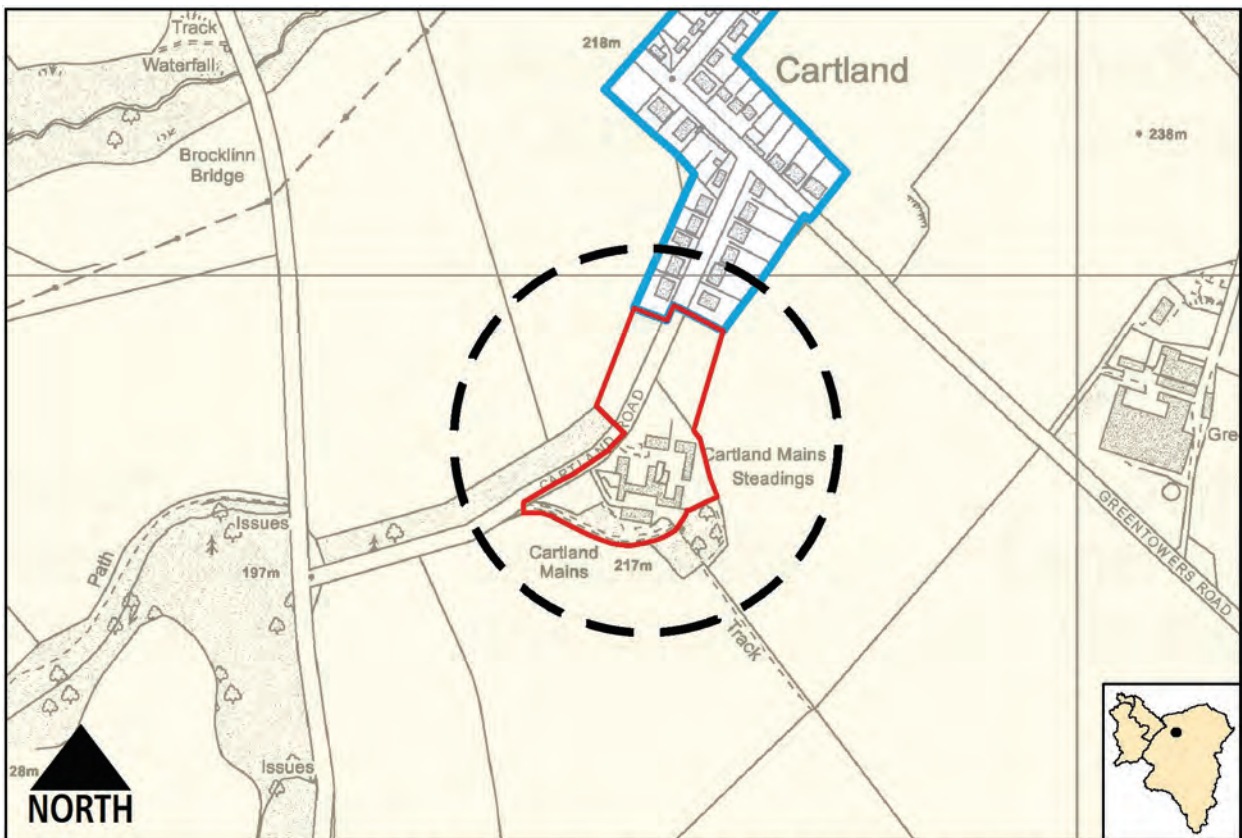
Map not to scale. © Crown copyright and database rights 2016. Ordnance Survey 100020730

4. Clyde Avenue, Bothwell



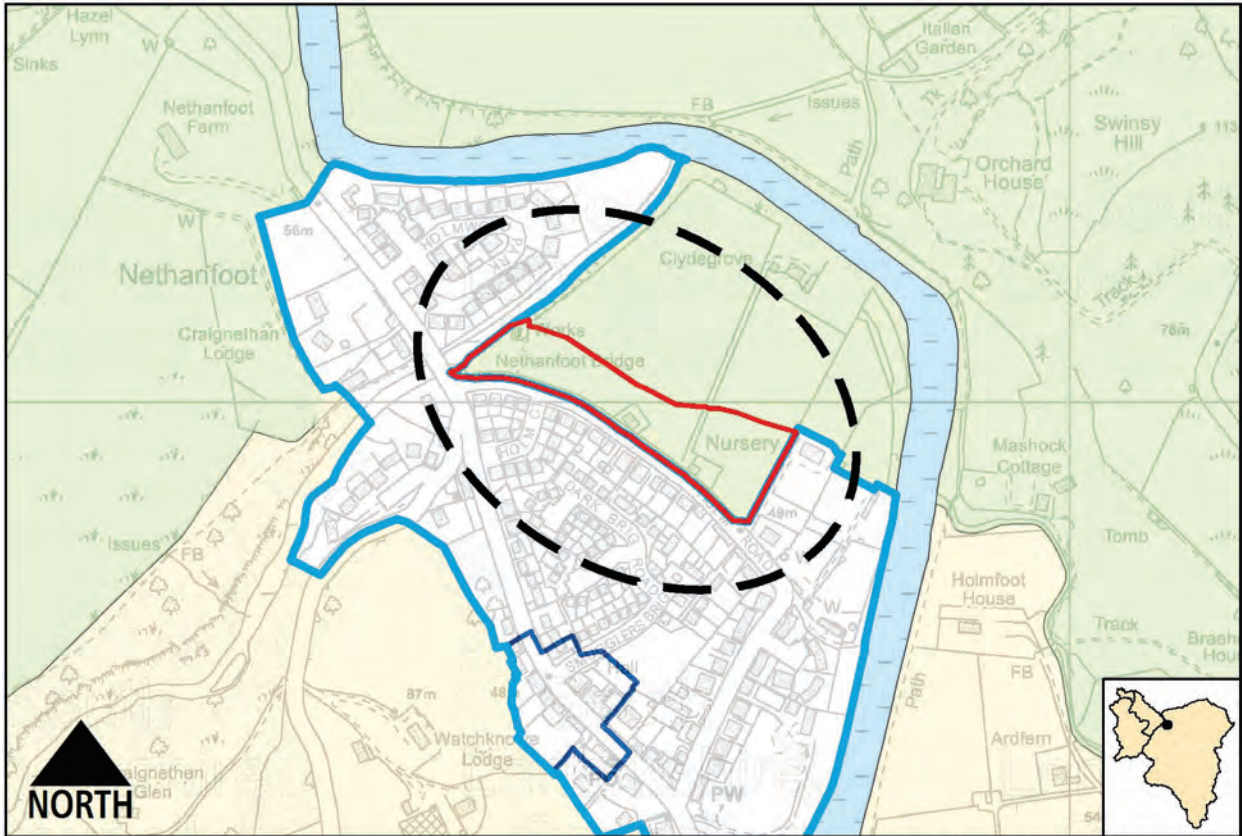
Map not to scale. © Crown copyright and database rights 2016. Ordnance Survey 100020730

5. Bushelhead Road, Carlisle



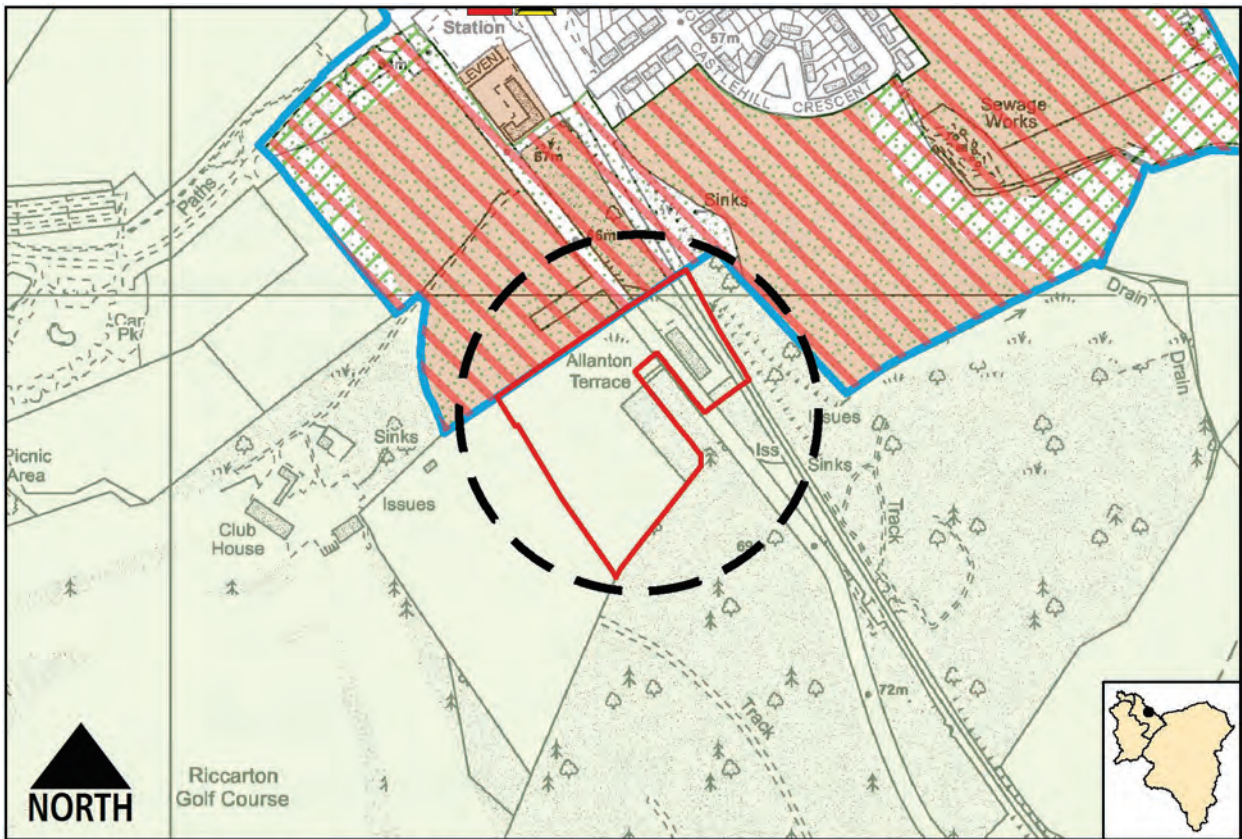
Map not to scale. © Crown copyright and database rights 2016. Ordnance Survey 100020730

6. Cartland Mains



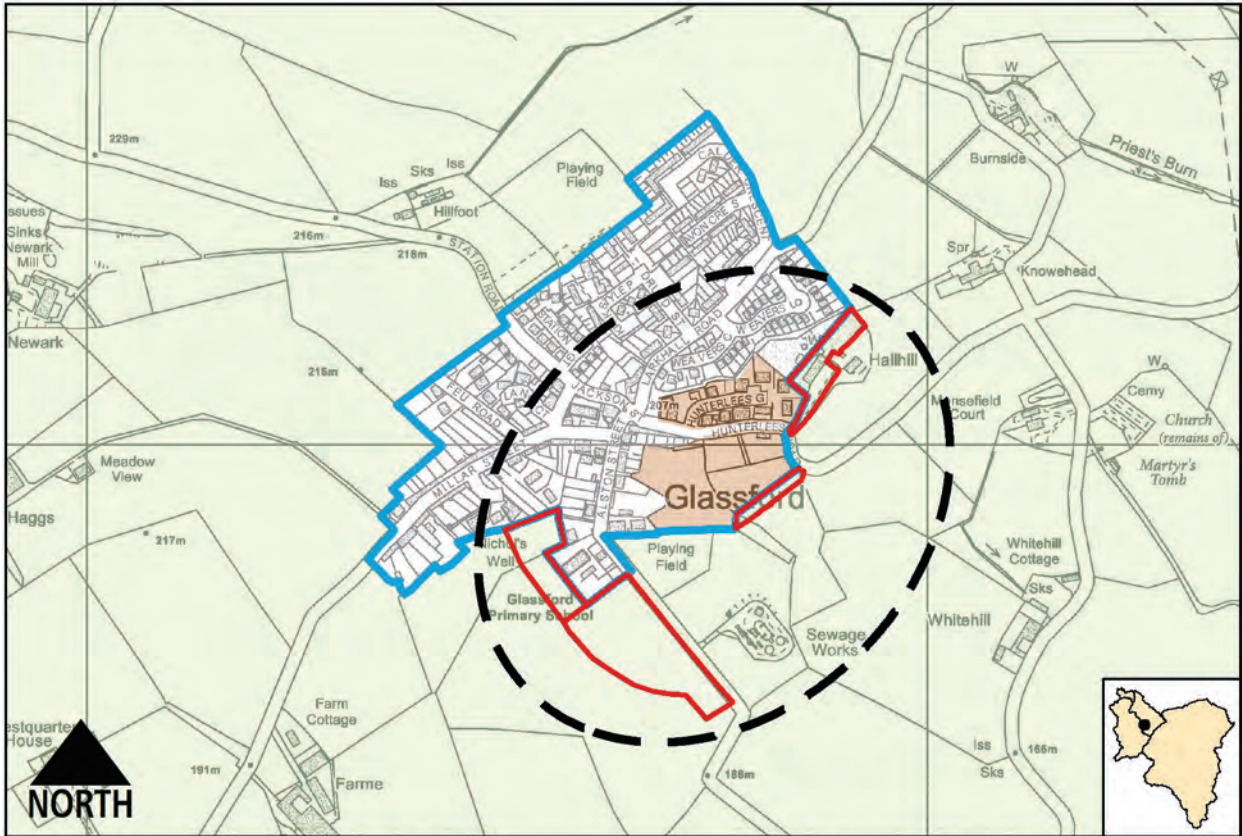
Map not to scale. © Crown copyright and database rights 2016. Ordnance Survey 100020730

7. Holm Road, Crossford



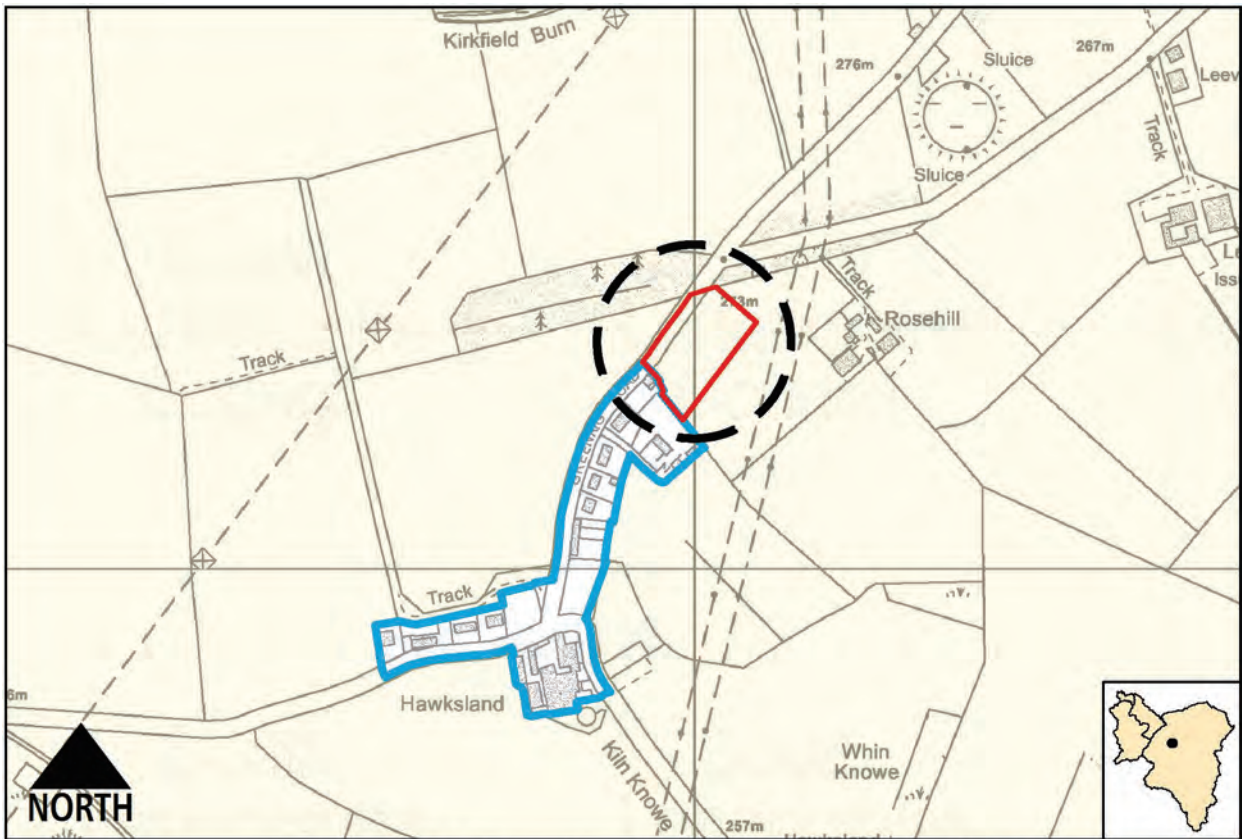
Map not to scale. © Crown copyright and database rights 2016. Ordnance Survey 100020730

8. Allanton Terrace, Ferniegair



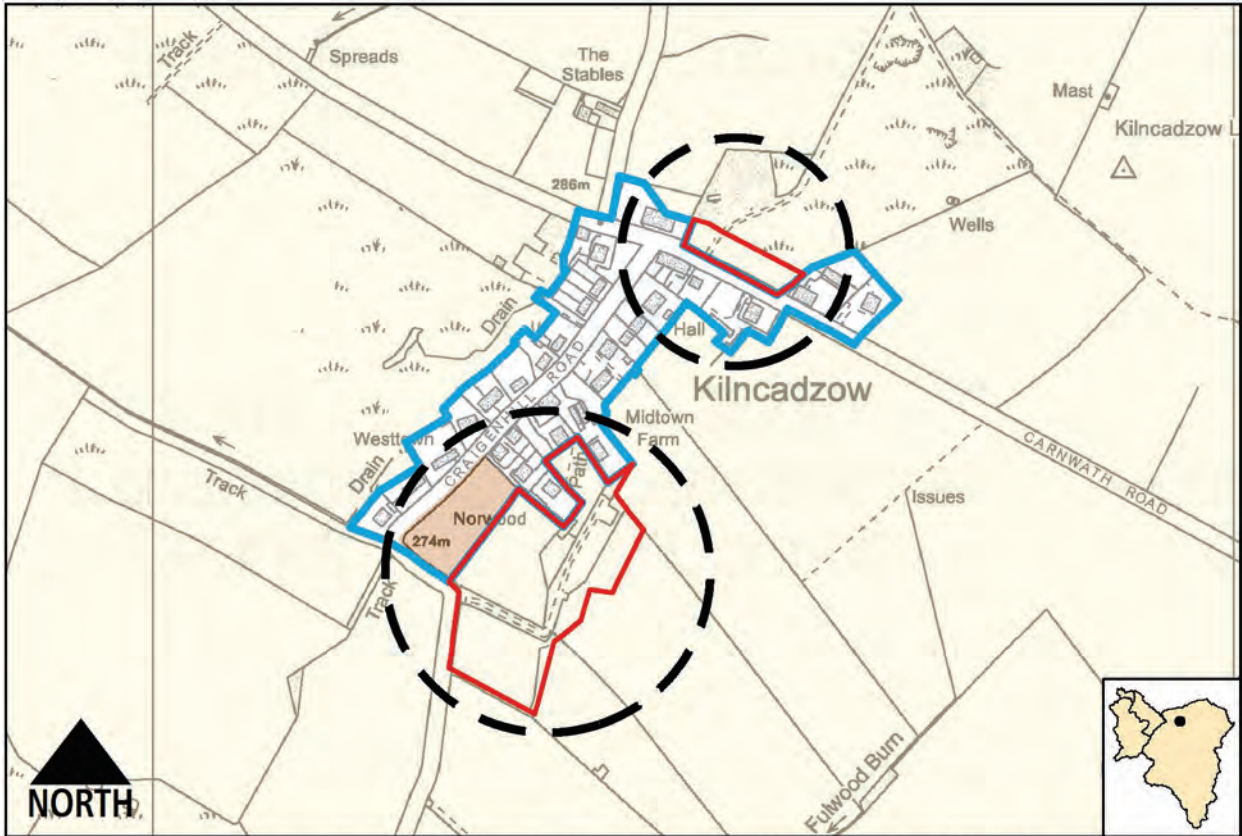
Map not to scale. © Crown copyright and database rights 2016. Ordnance Survey 100020730

9. Glassford



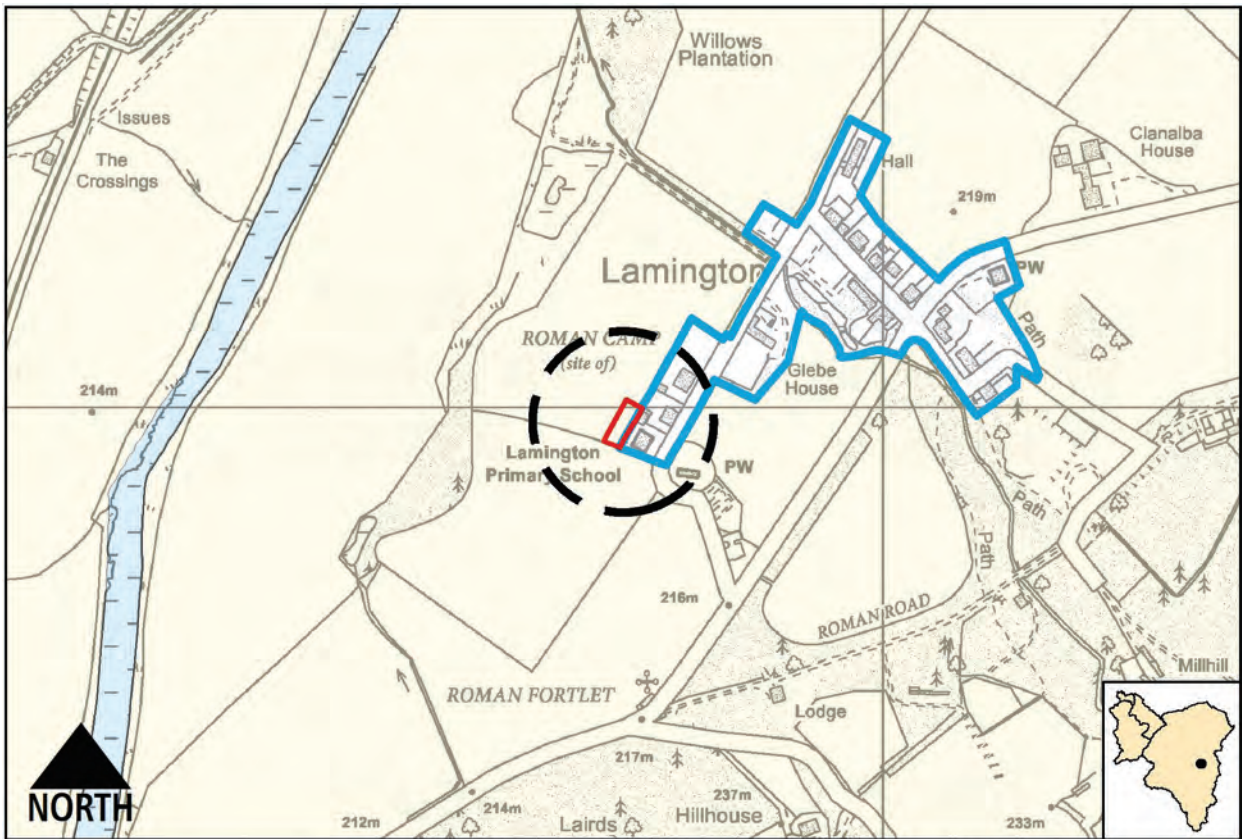
Map not to scale. © Crown copyright and database rights 2017. Ordnance Survey 100020730

10. Hawksland, Greenrigg Road



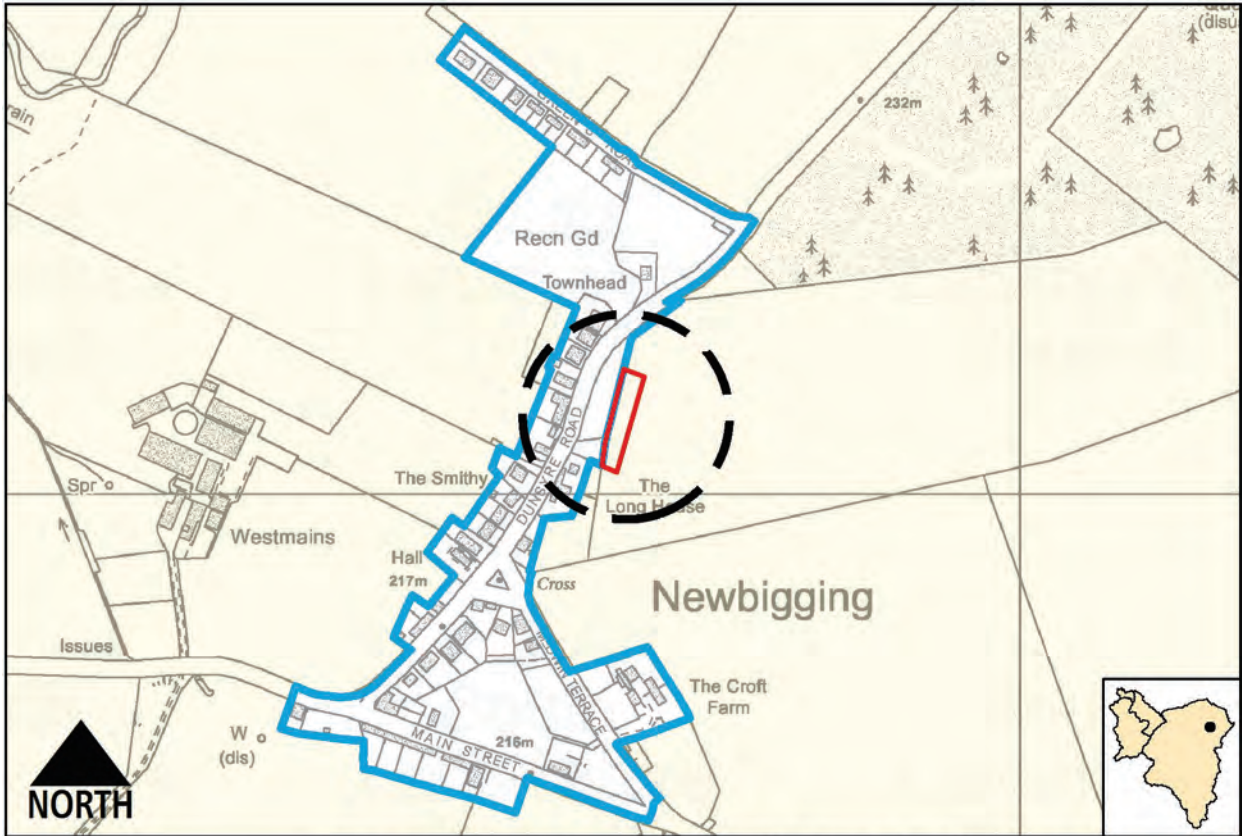
Map not to scale. © Crown copyright and database rights 2016. Ordnance Survey 100020730

11. Kilincadzow



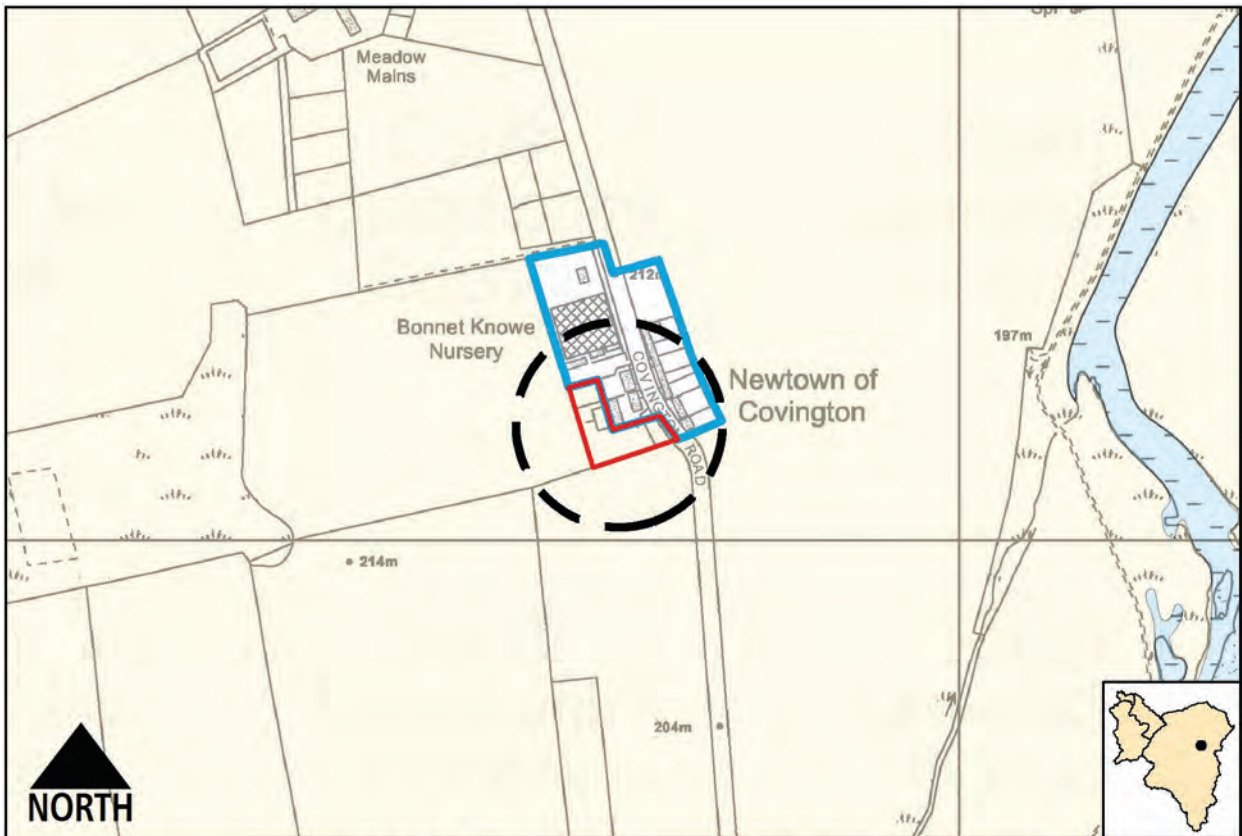
Map not to scale. © Crown copyright and database rights 2016. Ordnance Survey 100020730

12. Primary School, Lamington



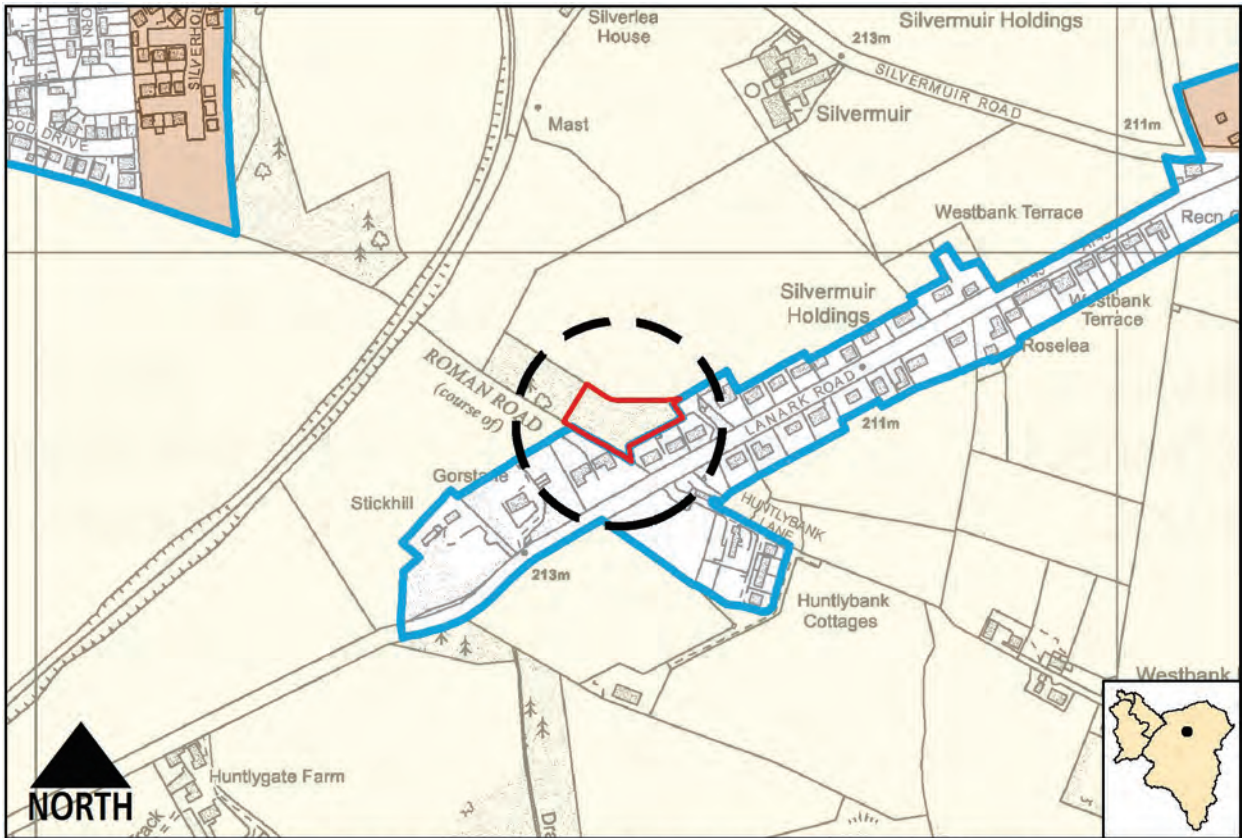
Map not to scale. © Crown copyright and database rights 2016. Ordnance Survey 100020730

13. Dunsyre Road, Newbigging



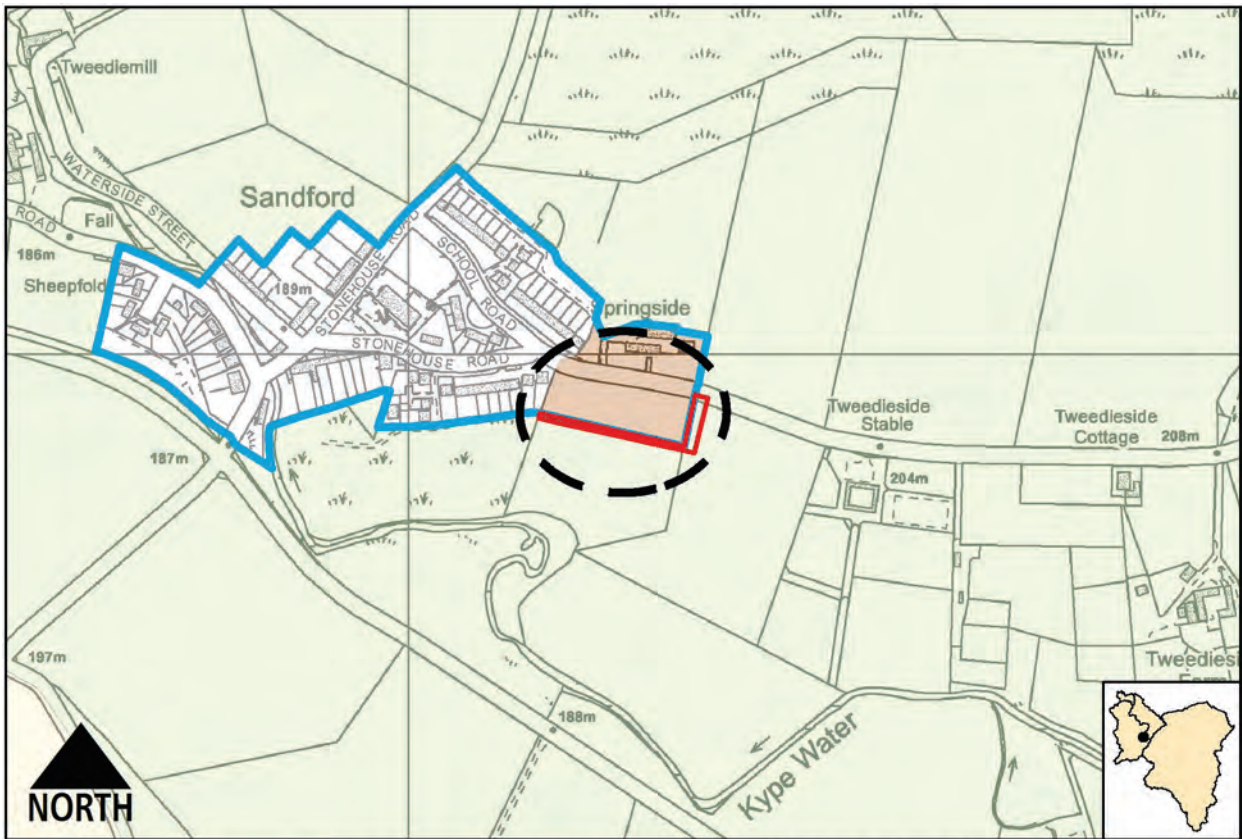
Map not to scale. © Crown copyright and database rights 2016. Ordnance Survey 100020730

14. Newtown of Covington



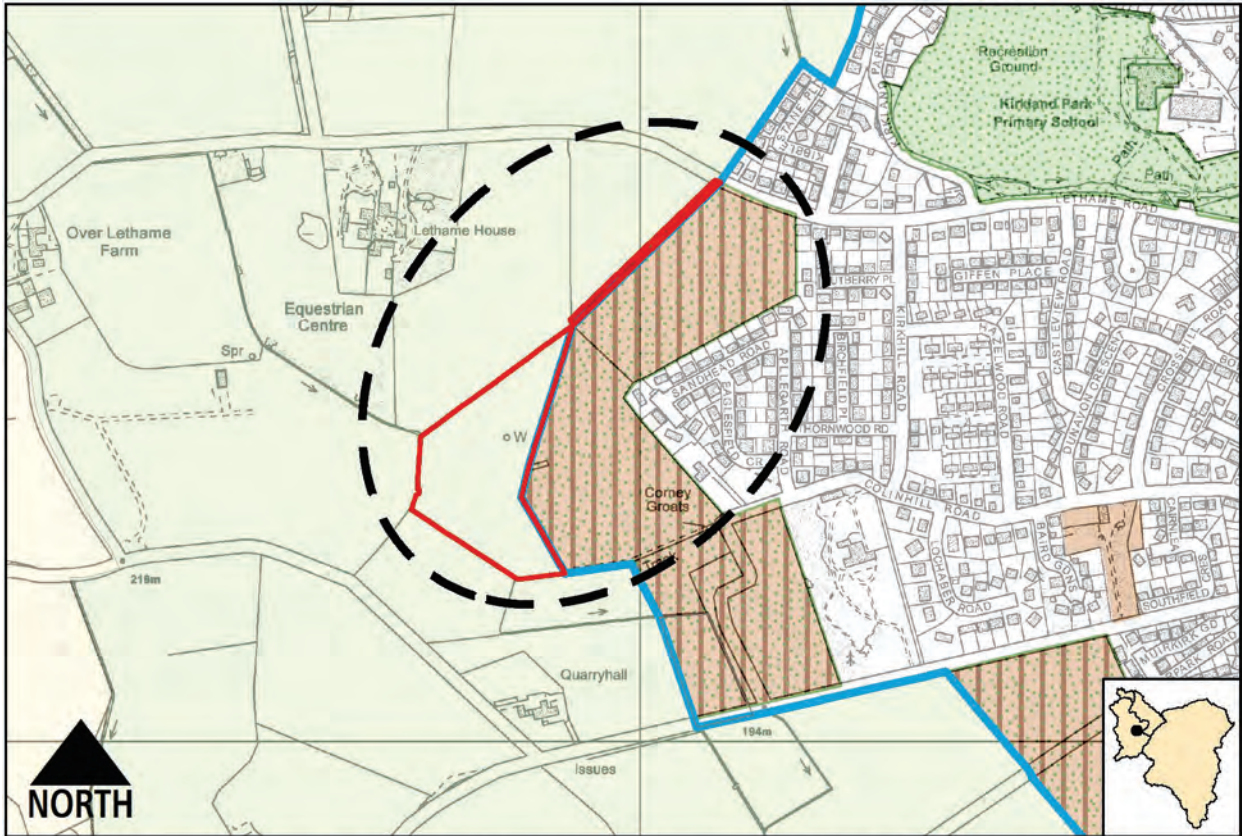
Map not to scale. © Crown copyright and database rights 2016. Ordnance Survey 100020730

15. Lanark Road, Ravenstruther



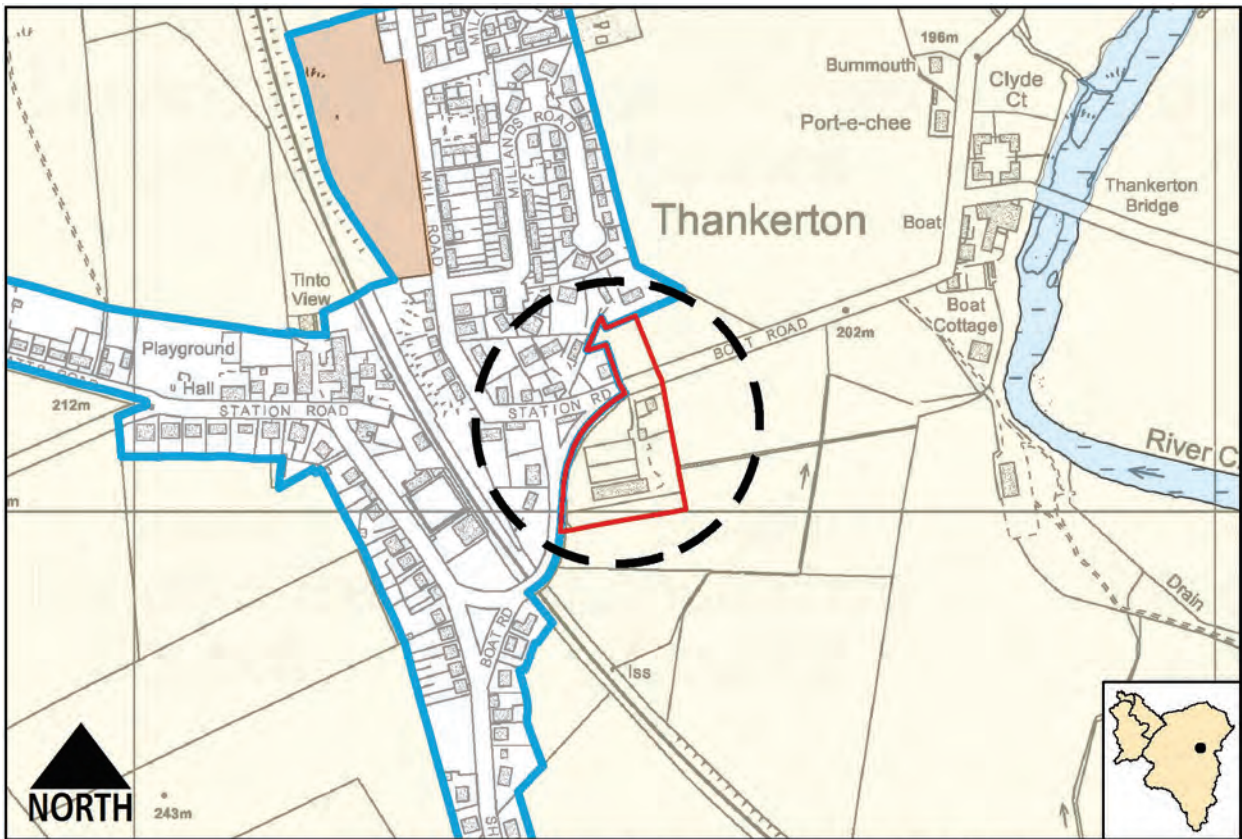
Map not to scale. © Crown copyright and database rights 2016. Ordnance Survey 100020730

16. Springside, Sandford



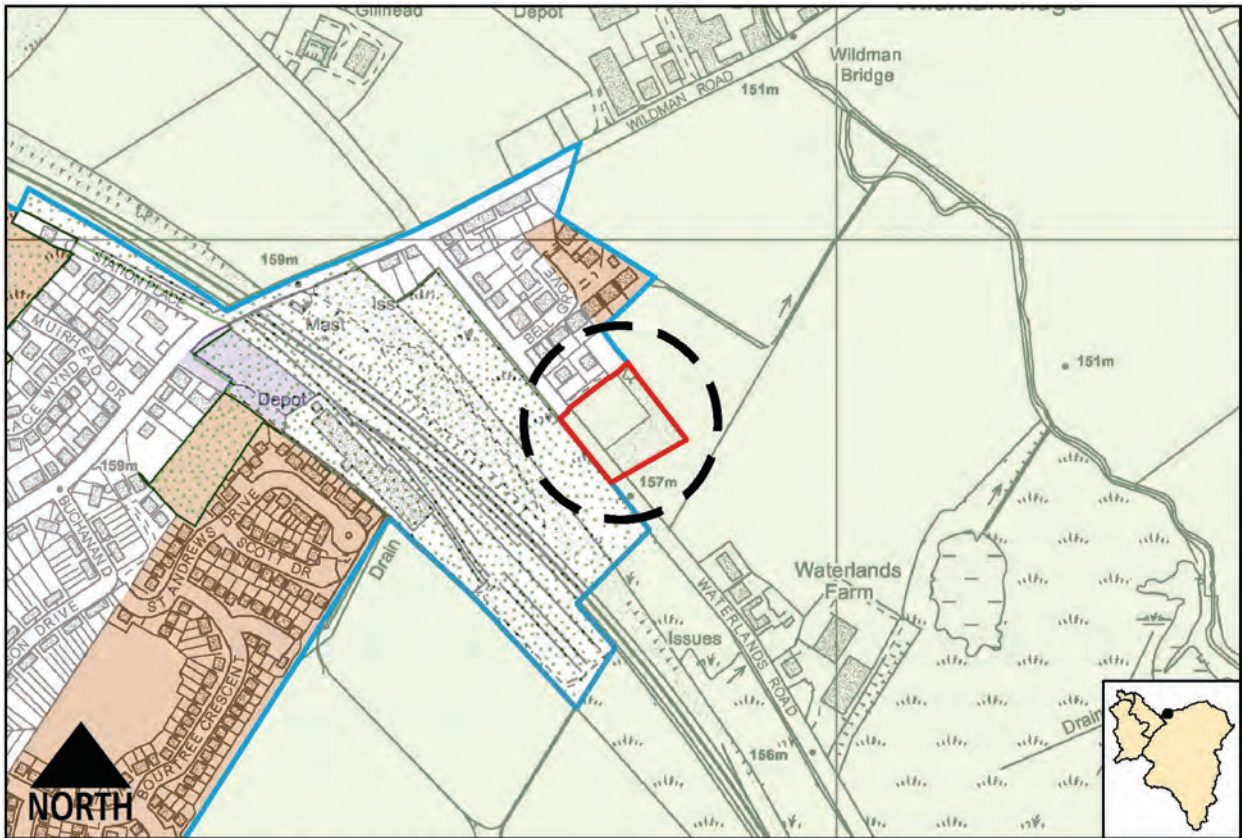
Map not to scale. © Crown copyright and database rights 2016. Ordnance Survey 100020730

17. Strathaven West, Strathaven



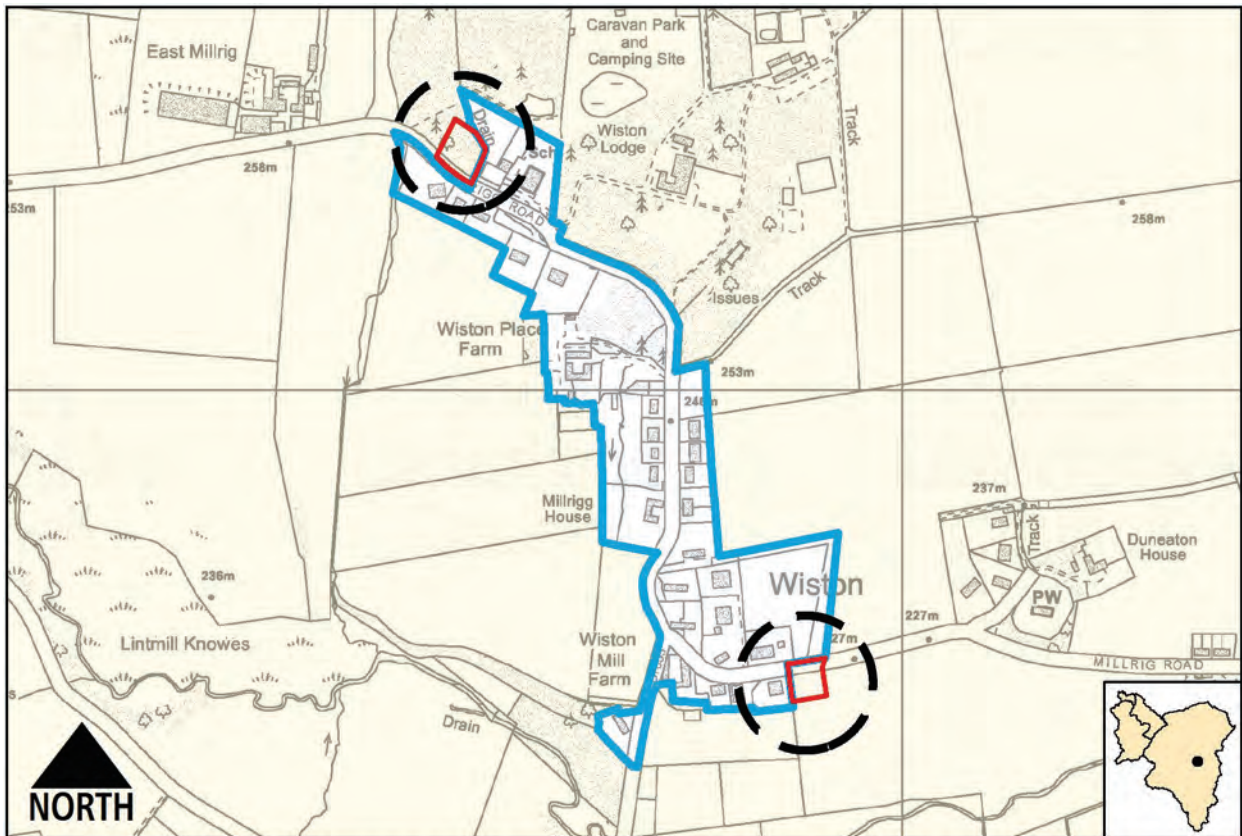
Map not to scale. © Crown copyright and database rights 2016. Ordnance Survey 100020730

18. Station Road, Thankerton



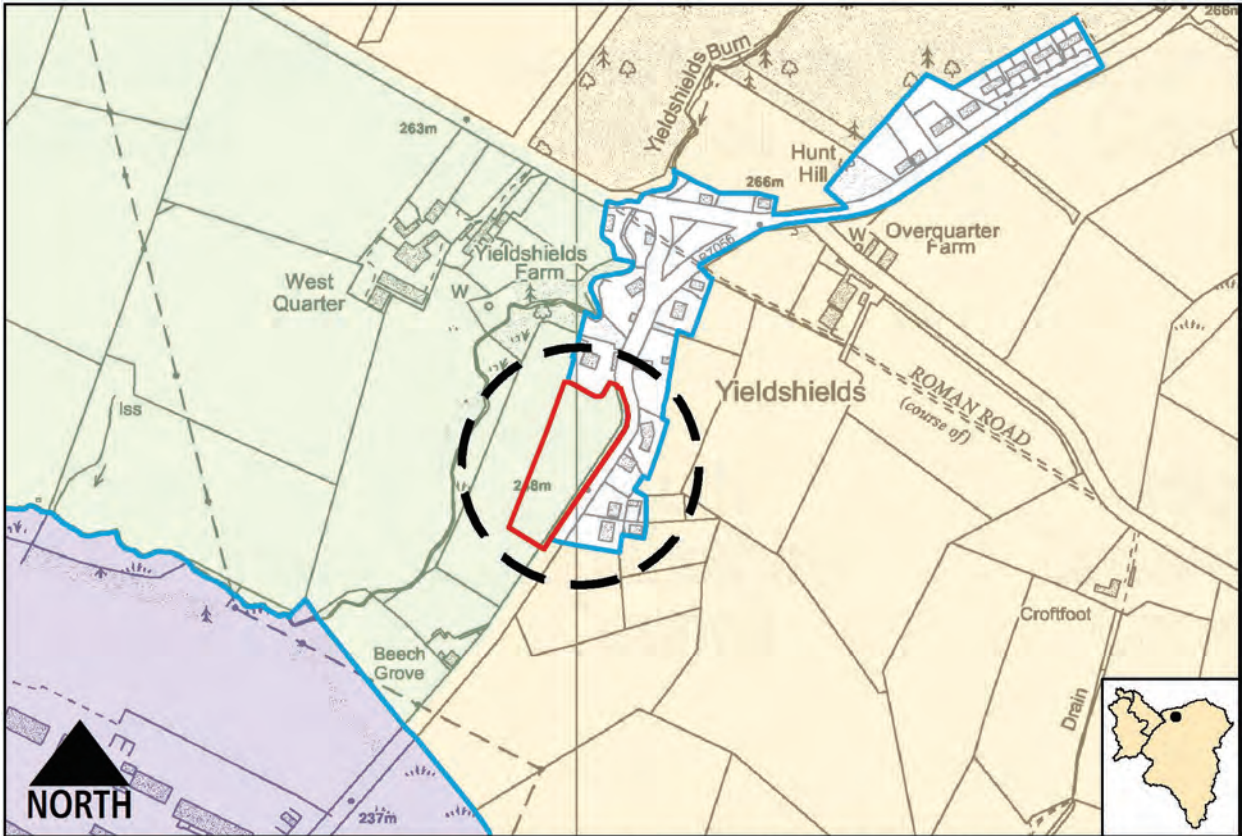
Map not to scale. © Crown copyright and database rights 2017. Ordnance Survey 100020730

19. Waterlands Road, Law



Map not to scale. © Crown copyright and database rights 2016. Ordnance Survey 100020730

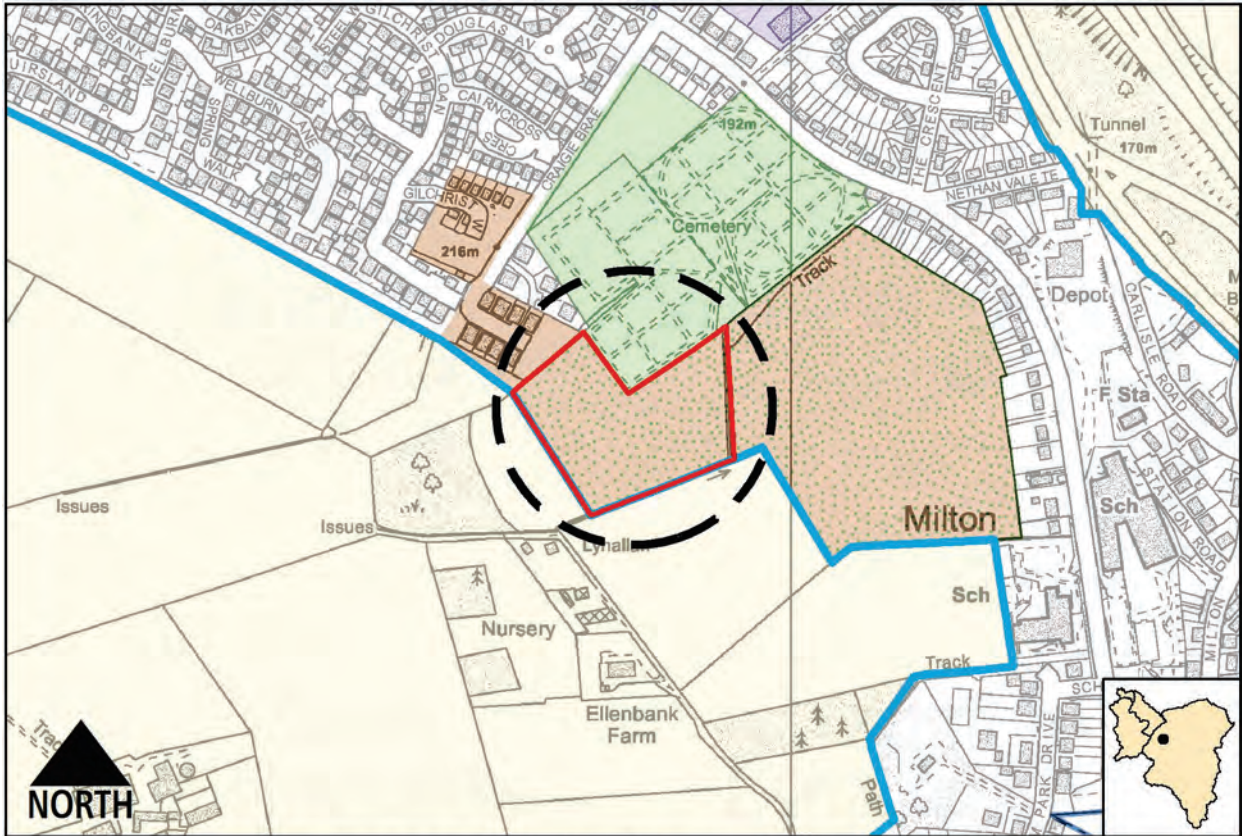
20. Wiston



Map not to scale. © Crown copyright and database rights 2017. Ordnance Survey 100020730

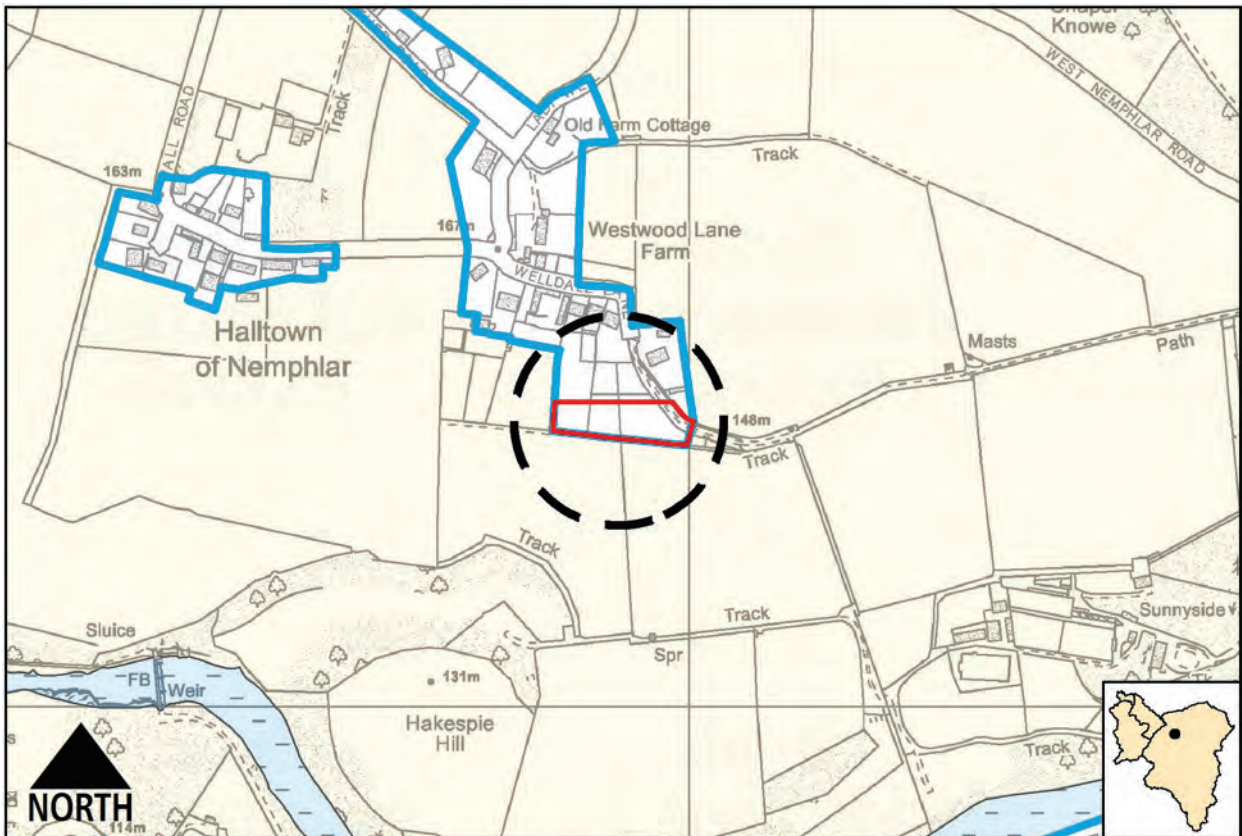
21. Yieldsields west of B7056

Deletions from Settlement Boundaries



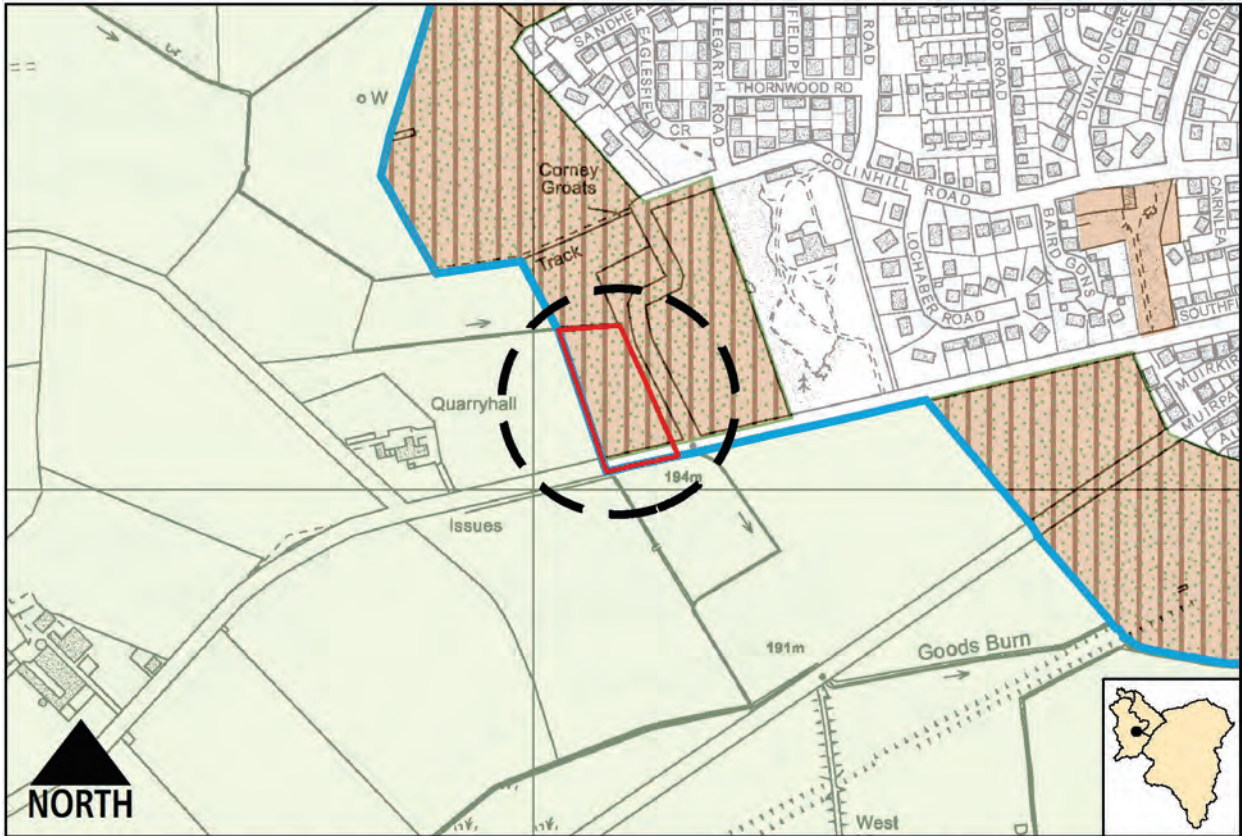
Map not to scale. © Crown copyright and database rights 2016. Ordnance Survey 100020730

1. Milton Farm, Lesmahagow



Map not to scale. © Crown copyright and database rights 2016. Ordnance Survey 100020730

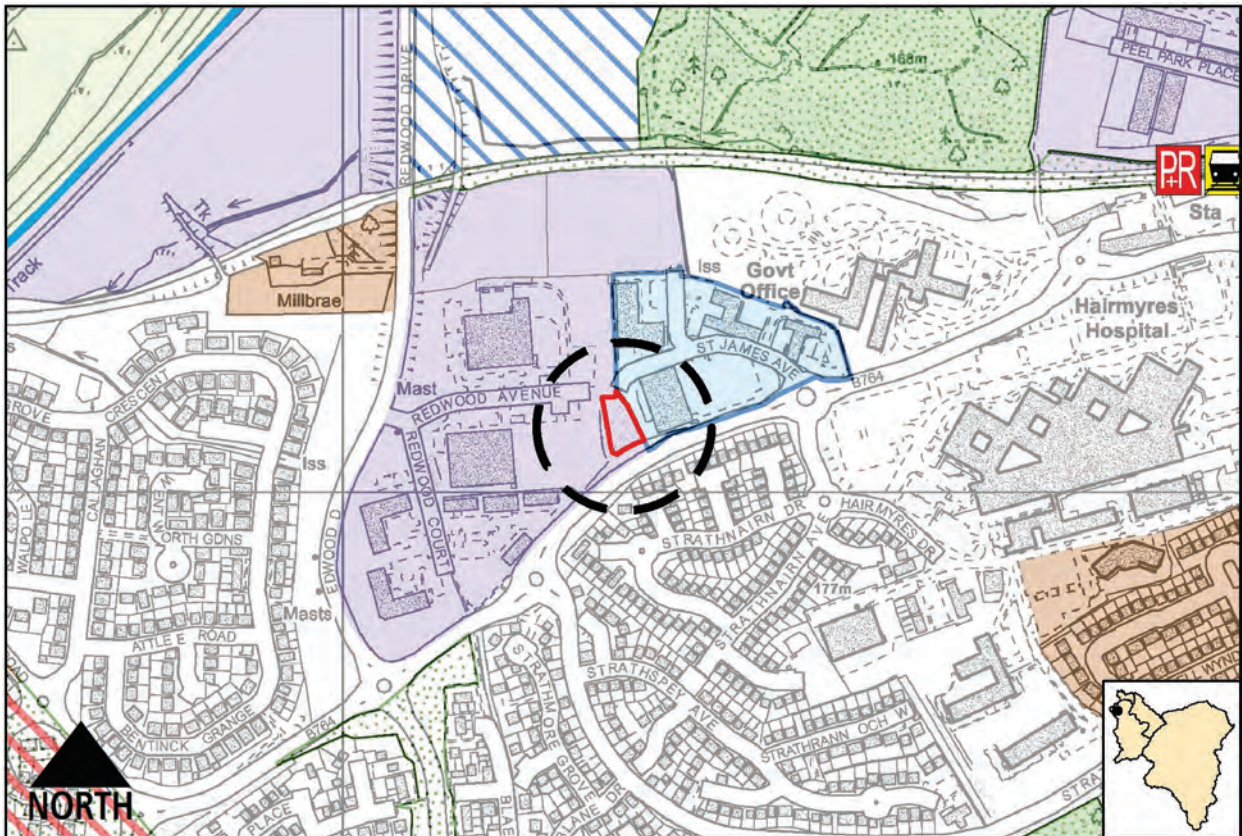
2. Nemphlar



Map not to scale. © Crown copyright and database rights 2016. Ordnance Survey 100020730

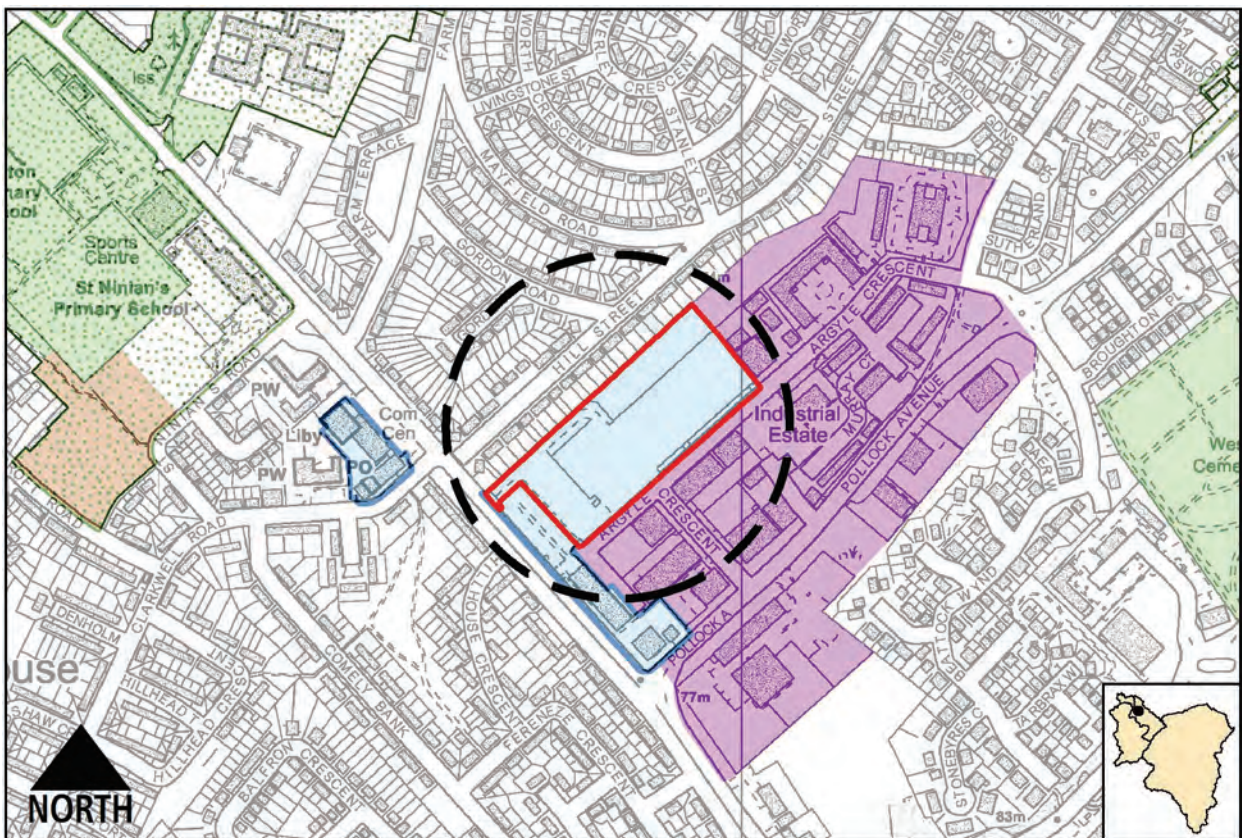
3. Strathaven West, Strathaven

Designation Changes



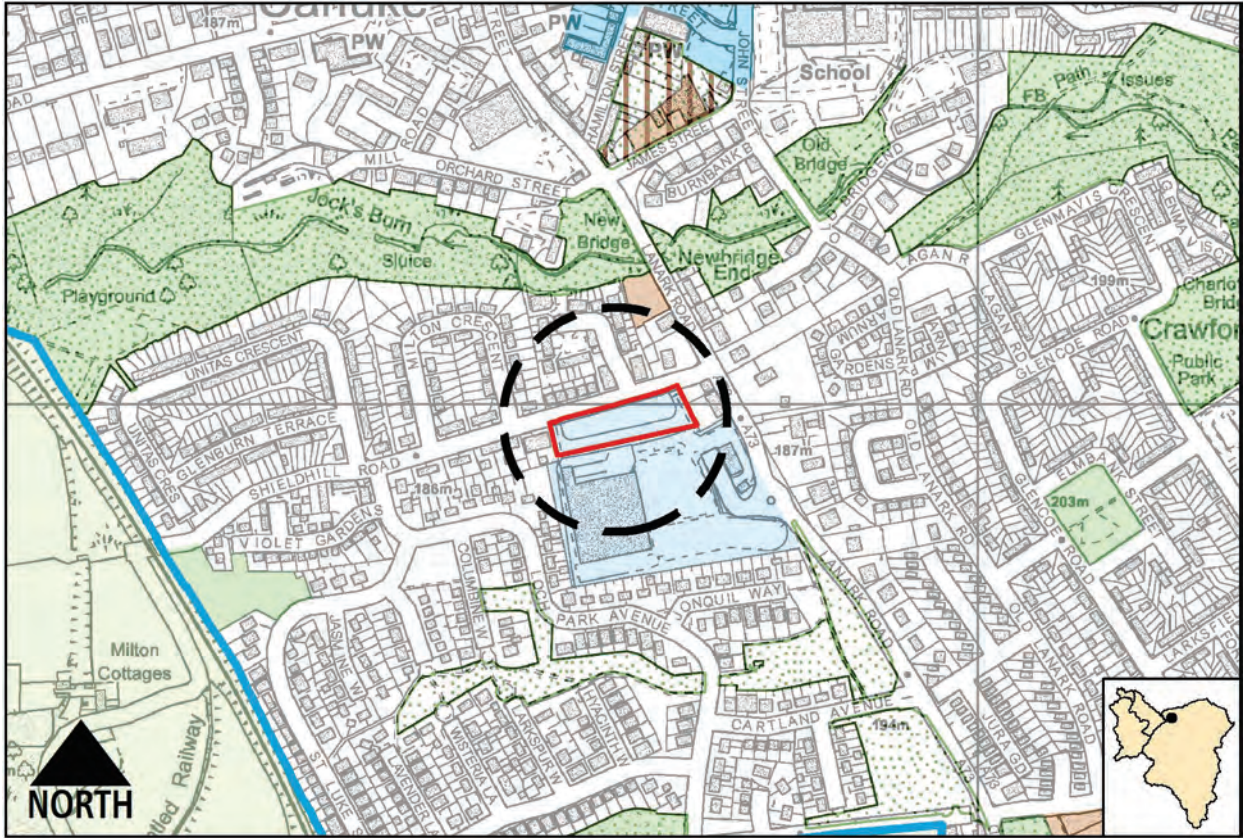
Map not to scale. © Crown copyright and database rights 2016. Ordnance Survey 100020730

1. St James Centre, East Kilbride



Map not to scale. © Crown copyright and database rights 2016. Ordnance Survey 100020730

2. Hillhouse Neighbourhood Centre, Hamilton

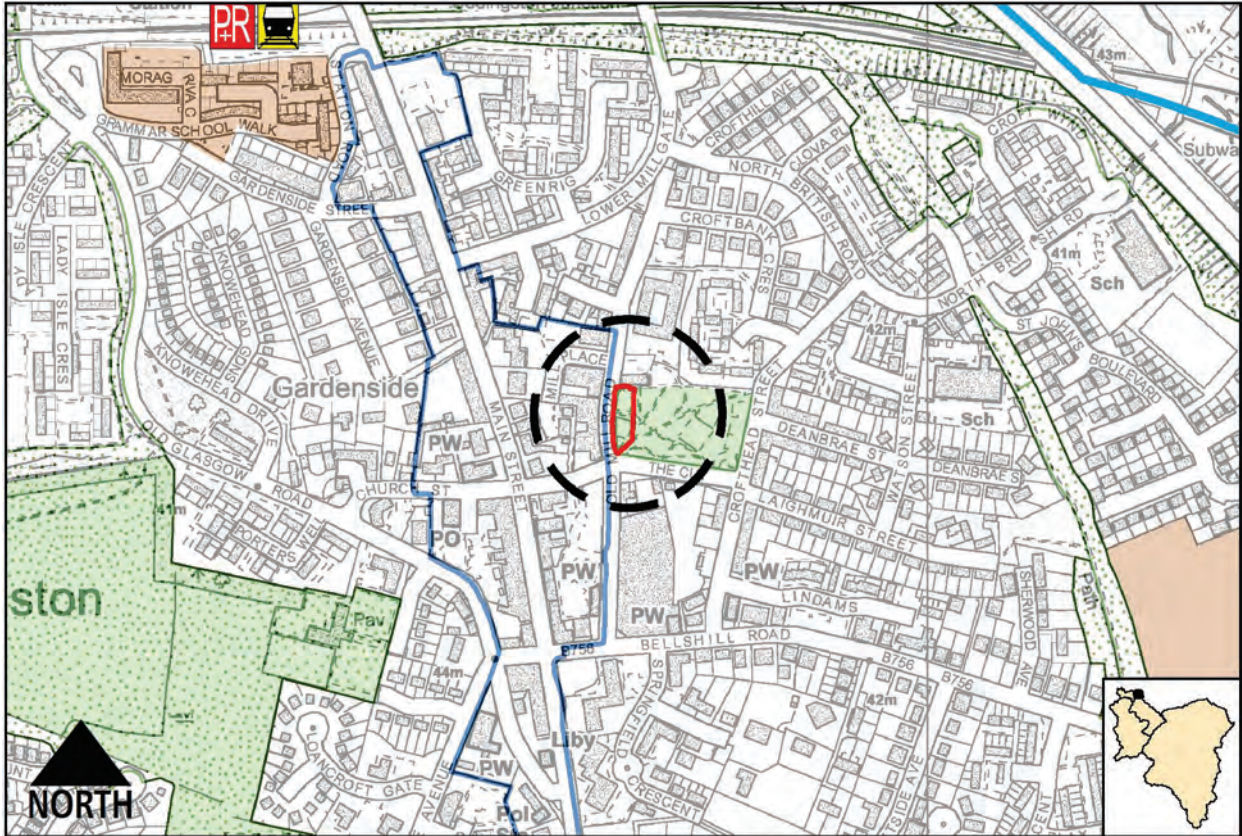


Map not to scale. © Crown copyright and database rights 2016. Ordnance Survey 100020730

3. Shieldhill Road, Carlisle

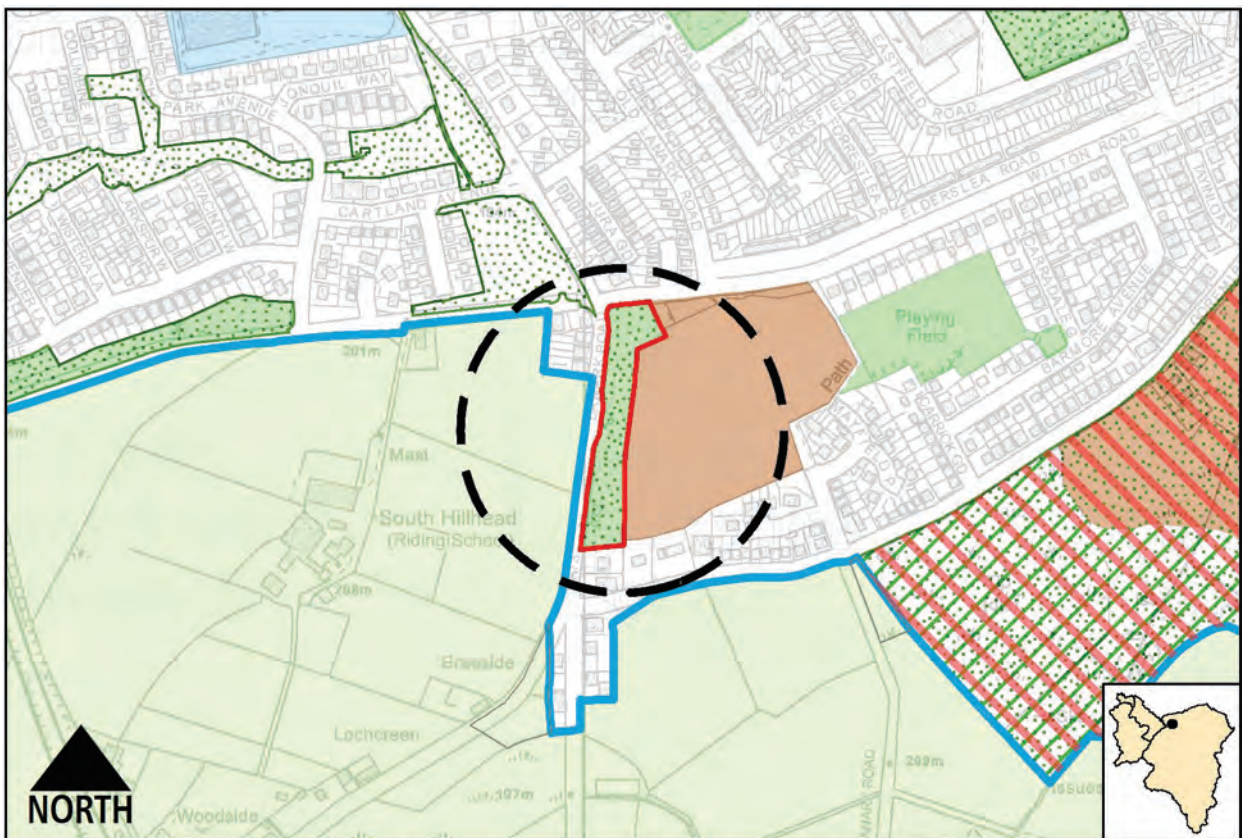
Changes to Green Network and Greenspace

1. Deletion of Priority Greenspace Designation



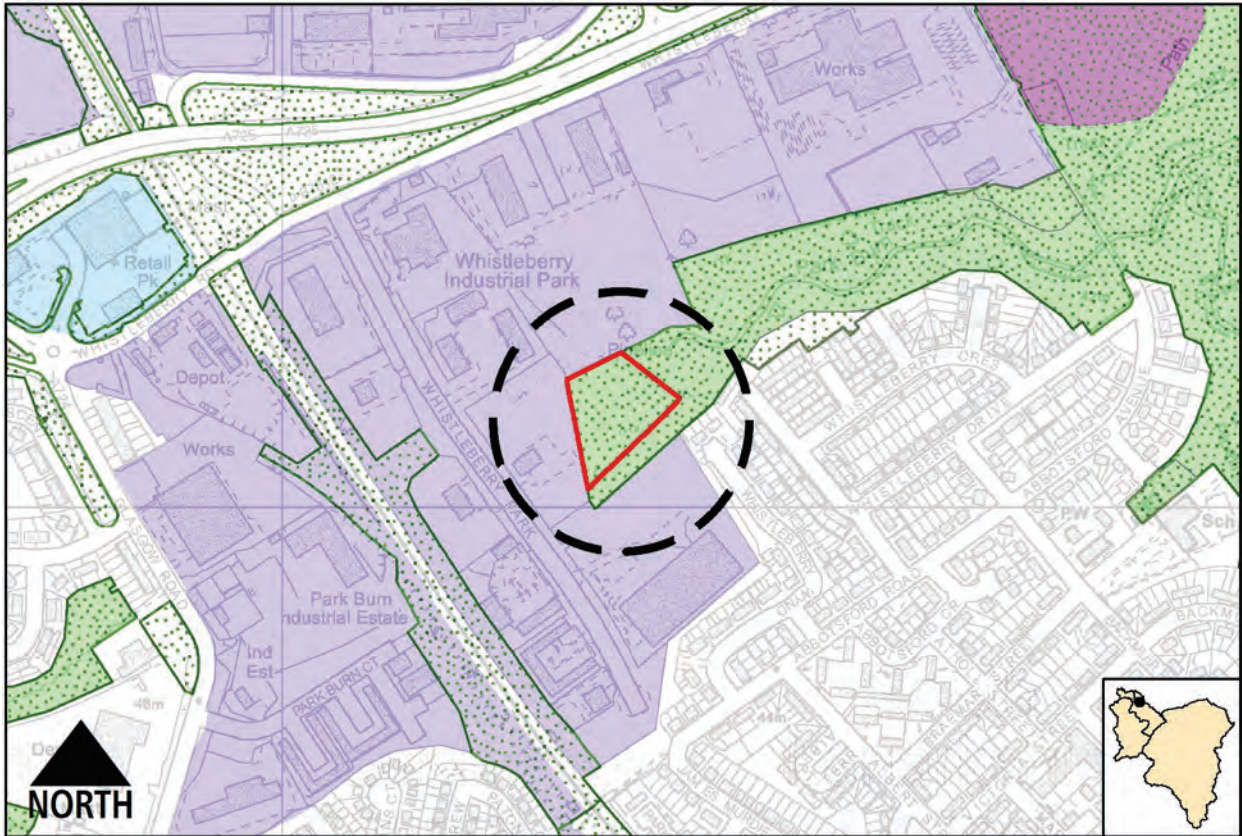
Map not to scale. © Crown copyright and database rights 2016. Ordnance Survey 100020730

Old Mill Road, Bothwell



Map not to scale. © Crown copyright and database rights 2016. Ordnance Survey 100020730

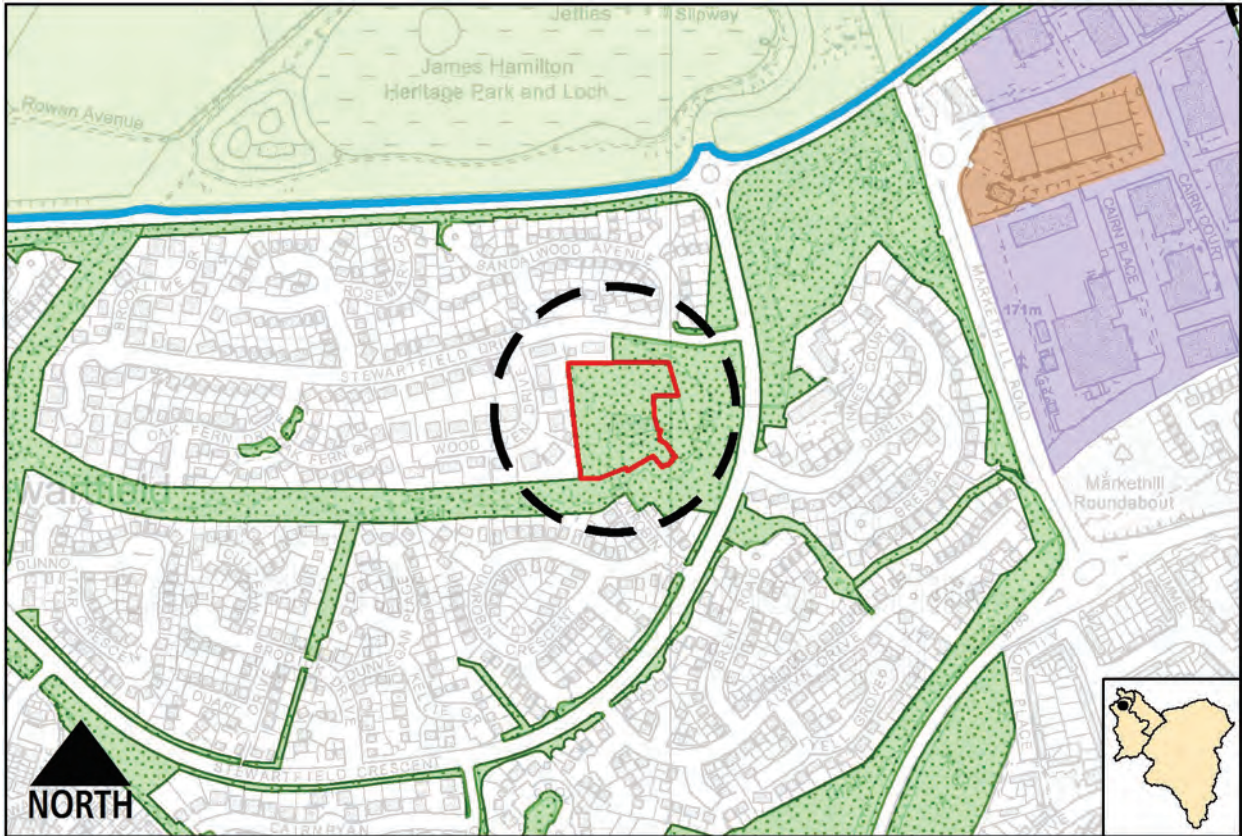
Lanark Road, Carluke



Map not to scale. © Crown copyright and database rights 2016. Ordnance Survey 100020730

Whistleberry Industrial Park, Blantyre

2. Deletion of Priority Greenspace and Green Network Designation



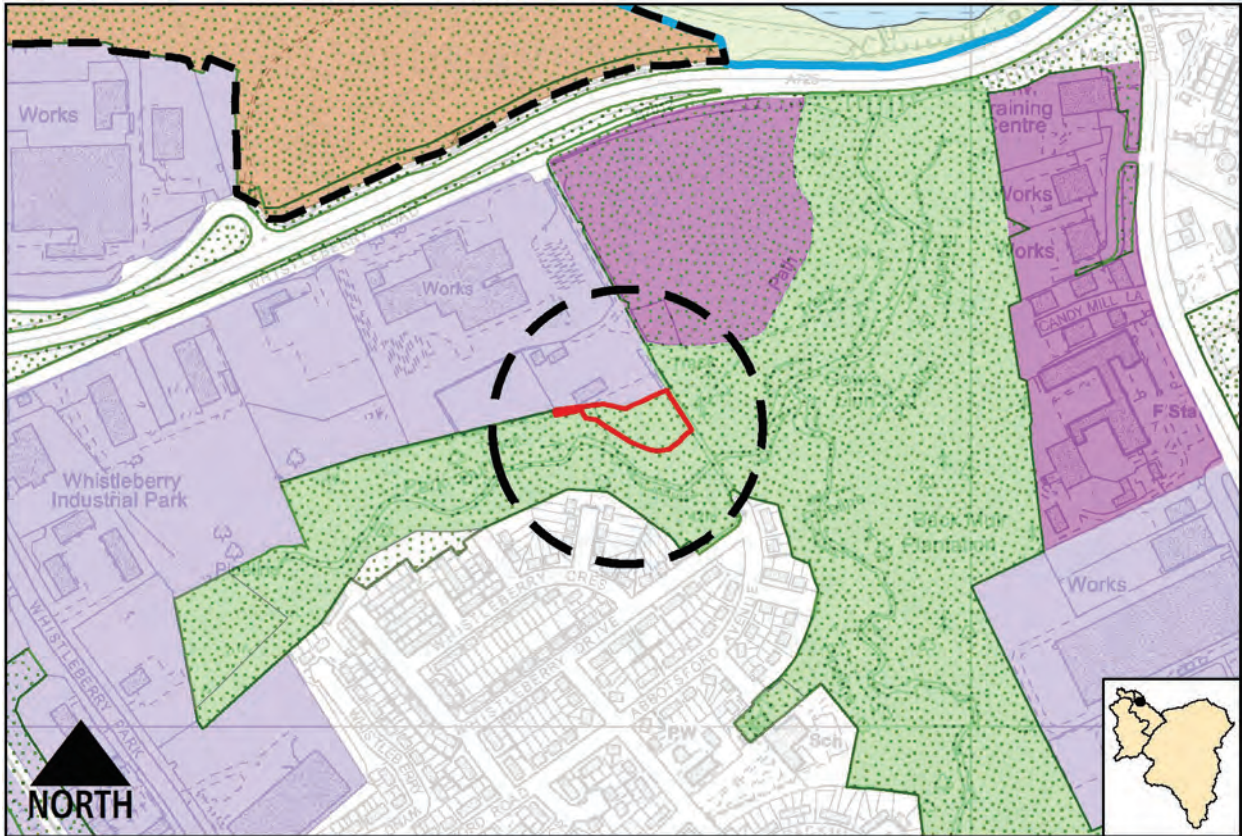
Map not to scale. © Crown copyright and database rights 2016. Ordnance Survey 100020730

Stewartfield Farm, East Kilbride



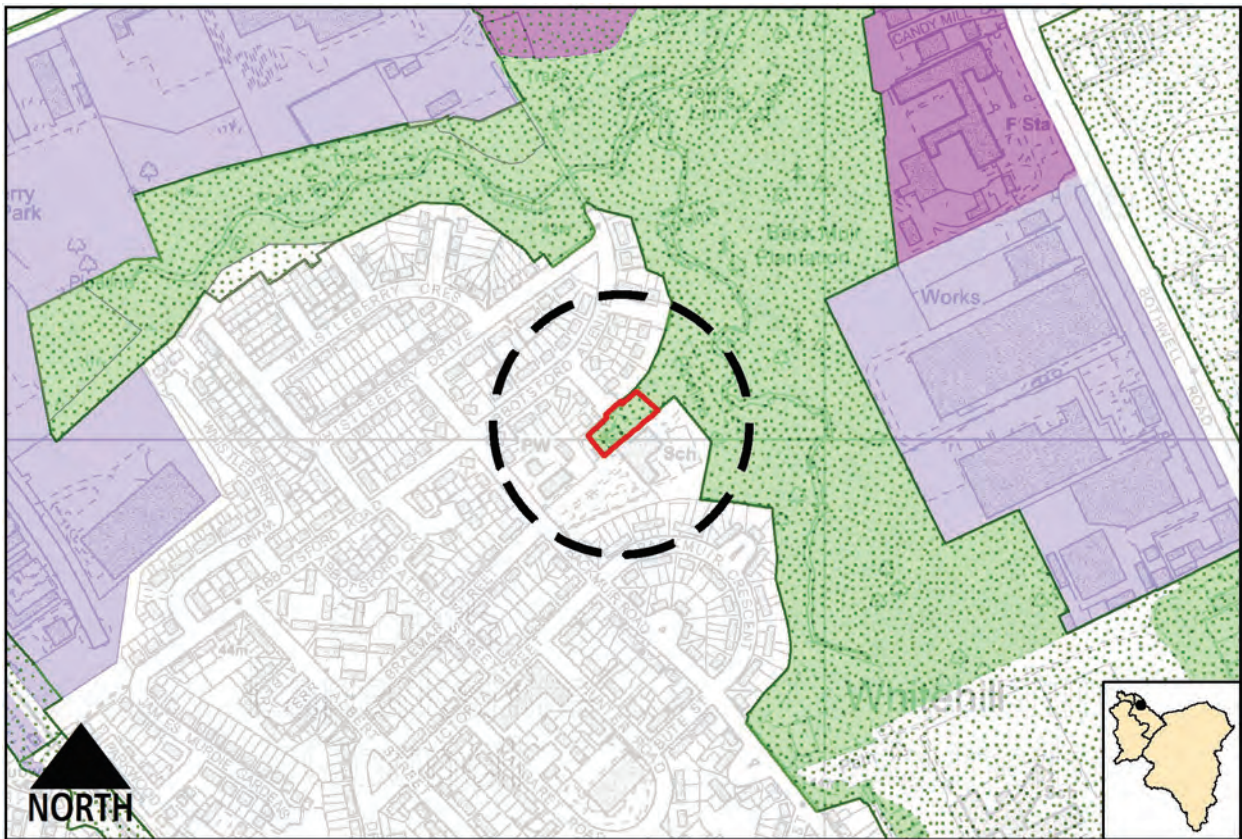
Map not to scale. © Crown copyright and database rights 2016. Ordnance Survey 100020730

Whitemoss Grove, East Kilbride



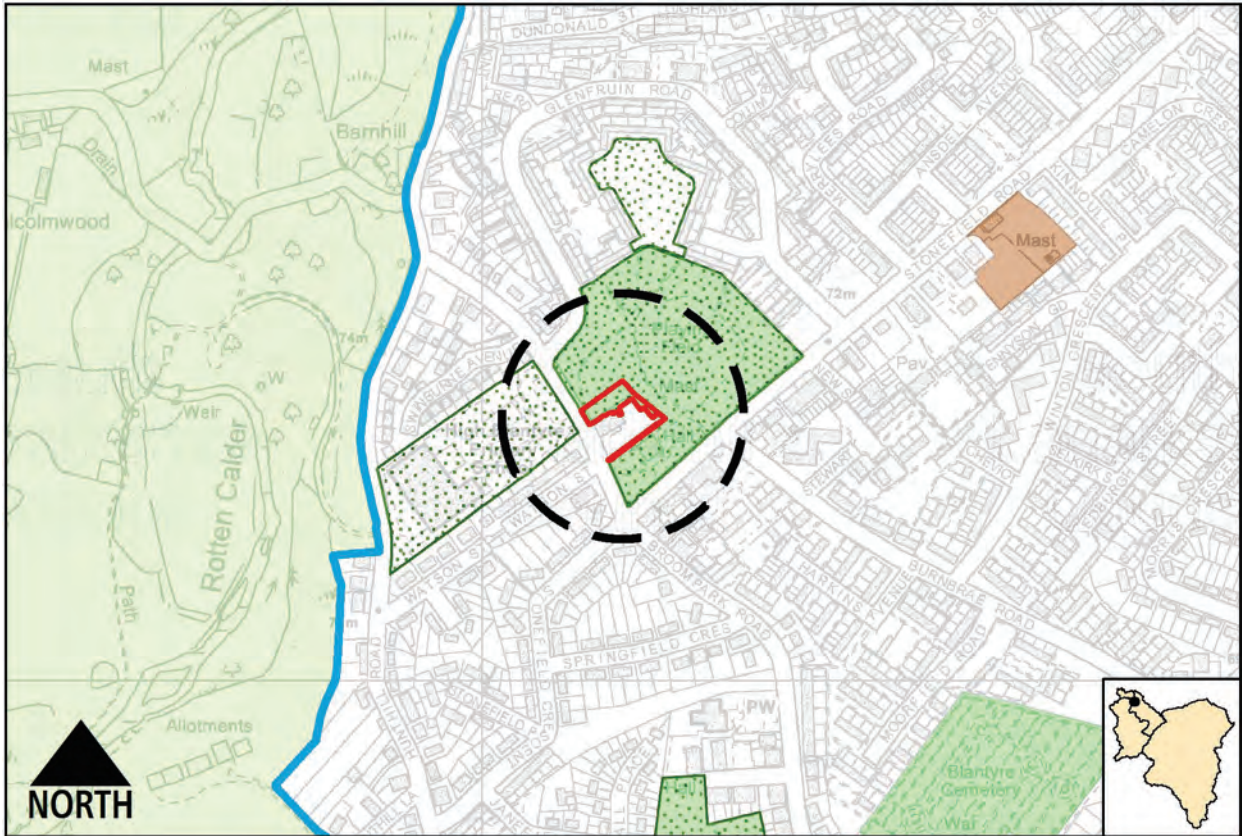
Map not to scale. © Crown copyright and database rights 2016. Ordnance Survey 100020730

Whistleberry Industrial Park, Blantyre



Map not to scale. © Crown copyright and database rights 2016. Ordnance Survey 100020730

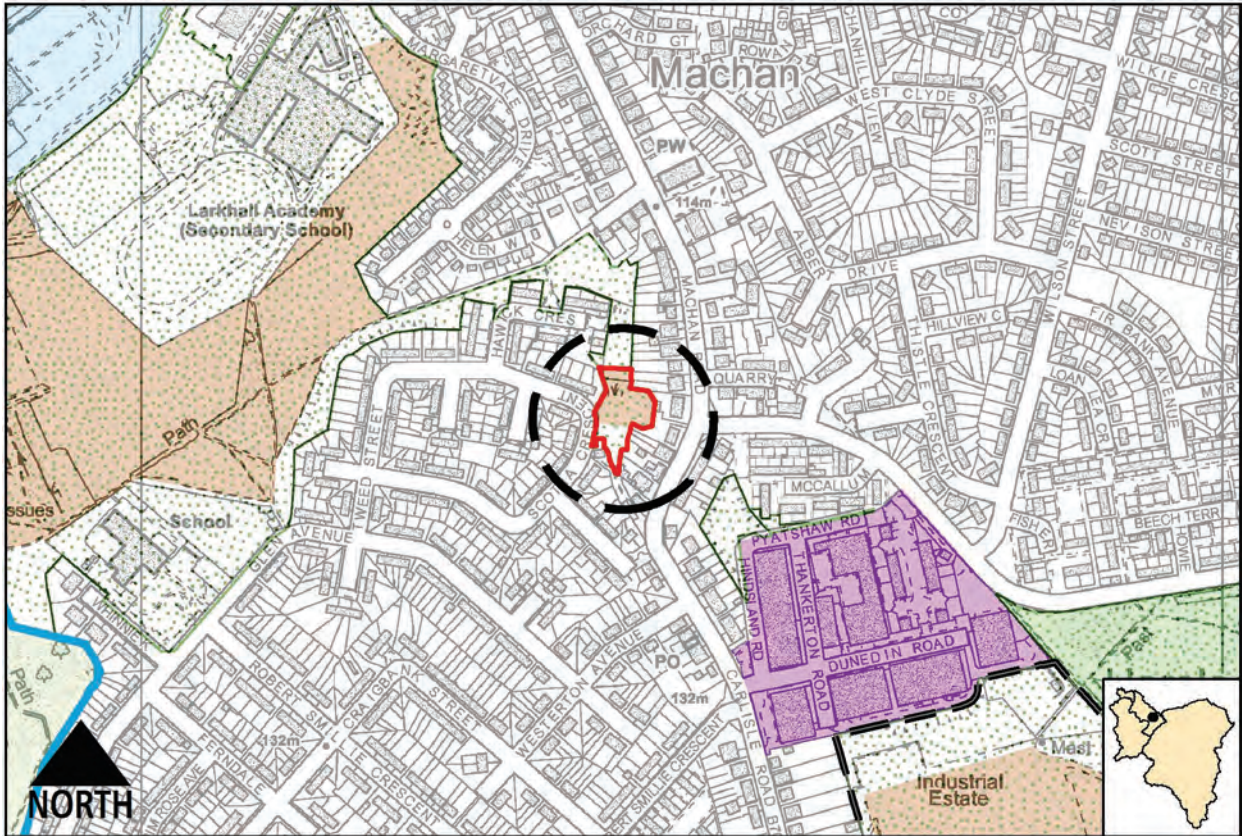
St Pauls Primary Abbotsford Road, Blantyre



Map not to scale. © Crown copyright and database rights 2016. Ordnance Survey 100020730

Broompark Road, Blantyre

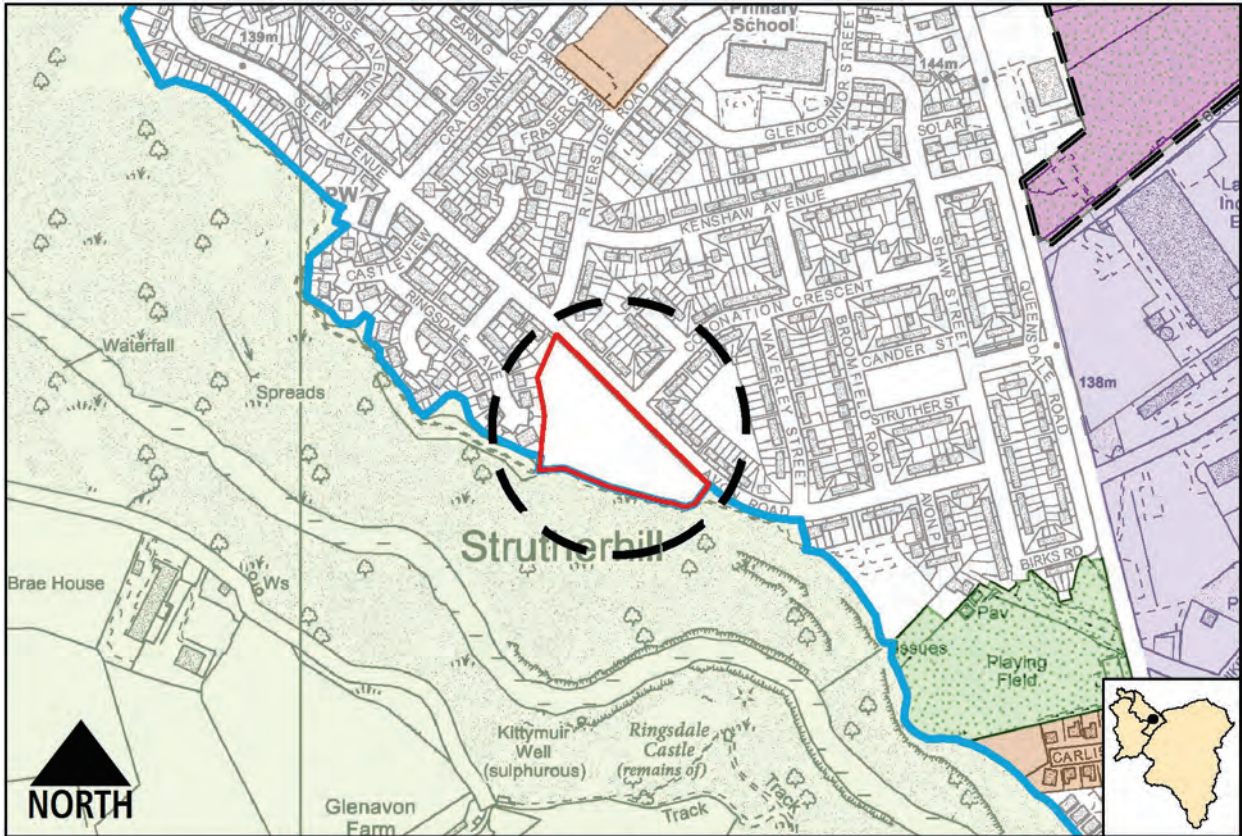
3.Deletion of Green Network



Map not to scale. © Crown copyright and database rights 2016. Ordnance Survey 100020730

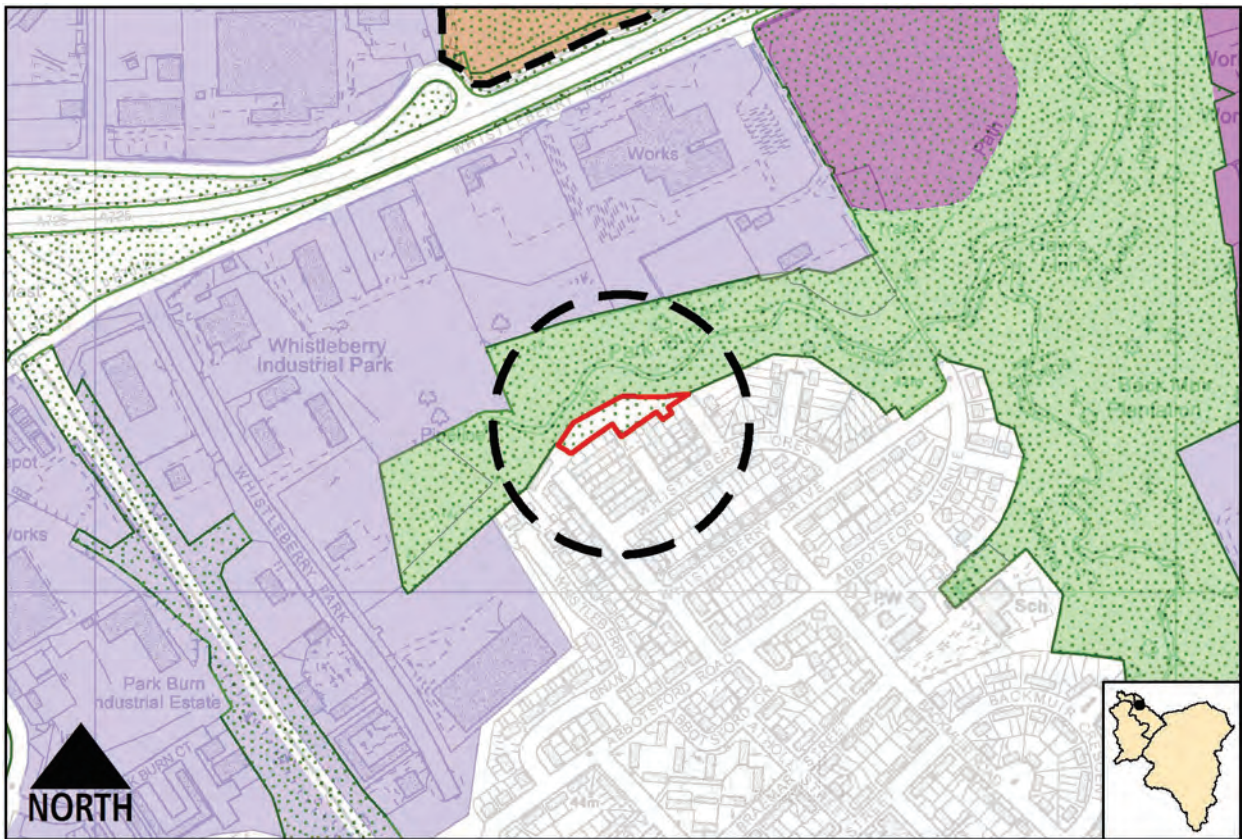
Scotia Crescent, Larkhall

4. Additions to Green Network and Greenspace



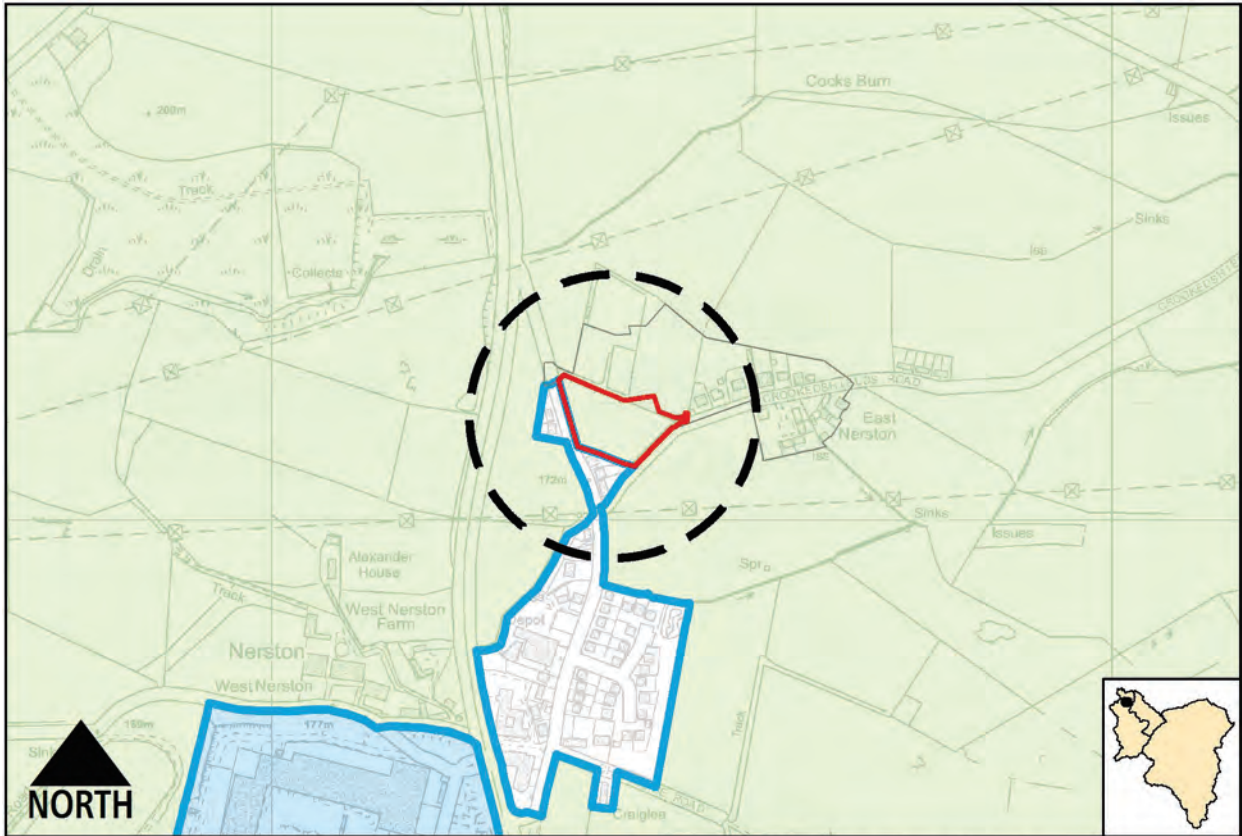
Map not to scale. © Crown copyright and database rights 2016. Ordnance Survey 100020730

Avon Road, Larkhall – Green Network



Map not to scale. © Crown copyright and database rights 2016. Ordnance Survey 100020730

Whistleberry Industrial Park, Blantyre – Priority Greenspace



Map not to scale. © Crown copyright and database rights 2016. Ordnance Survey 100020730

Nerston, East Kilbride – Priority Greenspace

South Lanarkshire
Local Development Plan
Main Issues Report

South Lanarkshire Council
Community and Enterprise Resources
Planning and Economic Development
Montrose House, 154 Montrose Crescent
Hamilton ML3 6LB
www.southlanarkshire.gov.uk

If you need this information in another language or format, please contact us to discuss how we can best meet your needs.
Phone 0303 123 1015 or email:
equalities@southlanarkshire.gov.uk