

Environmental Volunteer Network Newsletter

Spring 2018

The Volunteer Network

South Lanarkshire Council's Countryside and Greenspace Service work with environmental volunteers across the county in a number of ways. We continue to work closely with a number of groups to help improve sites and engage with local communities.

We are able to facilitate training for our volunteers and we are always interested in suggestions for potential courses that would help fulfil your objectives and build capacity within your group!

In this newsletter we have updates from Larkhall and District Volunteer Group, Badgers in the Landscape and an introduction to Butterfly Conservation's Urban Butterfly Project.

We also have the latest from Whitelee Windfarm and details of exciting training events with Froglife's Living Waters project.

Learn more about the amphibians in our area and get inspired to do some butterfly surveying, either on your site or out in the furthest reaches of South Lanarkshire!

We aim to organise some sessions on Emergency First Aid and Basic Health and Safety for volunteers this Spring/Summer so get in touch with us if you are interested.



Looking for butterflies!

Larkhall and District Volunteer Group

Together for the community ...

Larkhall and District Volunteer Group is a voluntary organisation, formed in September 1994 as 'Avondale Careline' to provide a friendly chat on the phone to elderly, disabled and housebound people.

The services provided have been expanded since 1994 to meet recognised needs within the local community. We welcome enquiries about our services, both from people who would find them helpful and from potential volunteers who could help us deliver them.



Lunch clubs

Genealogy



Gardening

I.T. for beginners

Football classics

Community transport

Interested in joining us?

LDVG are keen to speak to anyone in the community who may wish to join us either as a volunteer, service user or committee member.

Phone: **01698 888893** Email: admin@ldvg.org.uk

Registry House, 55 Victoria Street, Larkhall ML9 2BL



LARKHALL
+DISTRICT
VOLUNTEER
GROUP

South Lanarkshire Outdoor Access Forum (SLOAF)

South Lanarkshire Outdoor Access Forum consists of representatives from a wide range of outdoor interests including land managers, walkers, cyclists, equestrians, disabled people, anglers, communities and community groups. It is a sub partnership of the South Lanarkshire Sustainability Partnership.



Taking a walk...

After the Land reform Act came into force, Local Access Forums moved from a voluntary to a statutory basis, so many were set up in local authorities in 1997.

The Access Forum meets quarterly to discuss access projects and issues and has been instrumental in core path planning. We also have a representative on the National Access Forum.

For more information see the South Lanarkshire Council website, or contact paths@southlanarkshire.gov.uk



Forum Whitelee visit – September 2017

Free butterfly identification workshop!

Anthony McCluskey, Urban Butterfly Project Officer, Butterfly Conservation Scotland

Recording butterflies has never been easier, with recording through apps and online making it possible for everyone to get involved.

We're particularly interested in the butterflies found in urban greenspaces of central Scotland, so we're running free butterfly identification and recording workshops this summer to train new recorders and volunteers. Recent studies have found that butterflies in urban areas are declining more quickly than those in the countryside, so records from gardens, parks, allotments and footpaths are very important in helping us see just where butterflies do best in our towns and cities.

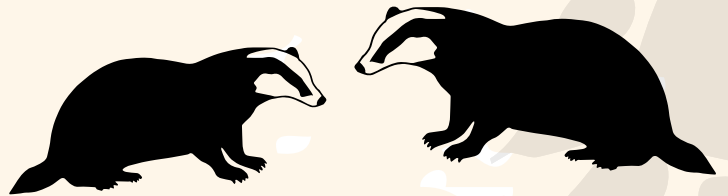
A butterfly identification workshop is planned for South Lanarkshire in May (date and venue to be confirmed). If you'd like to be kept informed about the event, please email me on amcccluskey@butterfly-conservation.org



Small Tortoiseshell, Samantha Batty



Scottish badgers



Interested in getting outside more and finding out about the badgers in your area?

For the past two years, the charity Scottish Badgers has been working in partnership with the Council's countryside ranger service on the 'Badgers in the Landscape' project. This is a Lottery-funded project aimed at protecting South Lanarkshire's badgers, their setts and natural habitats through community action.

South Lanarkshire has some of the highest levels of badger crime in Scotland, in particular badger baiting.



Eddlewood Bing dug sett

This cruel activity involves fighting badgers with dogs, resulting in horrific injuries or death for both the badgers and the dogs. We frequently come across the aftermath of this during our work – large 'crowning down' holes at setts and abandoned baiting equipment such as spades and ropes.

Alongside a public awareness campaign, we've been working with our volunteers to map and monitor badger setts across South Lanarkshire. Our records can then be used by Police Scotland if setts are interfered with, giving a date confirming last known occupancy. It's been great to get out and about so much with like-minded people – it's such a thrill to follow field signs such as paths and footprints to find a badger sett! Our trail cameras (deployed at various sites within South Lanarkshire) are also revealing so much about badger life, including what utterly playful creatures they are and the strong bonds that develop within each badger social group or 'clan'.



Volunteers

Scottish Dragon Finder

Scottish Dragon Finder is Froglife's flagship project in Scotland funded by Heritage Lottery Fund (www.hlf.org.uk/).

It brings together practical conservation, surveying, data collection and interactive educational activities to help conserve reptiles and amphibians in the UK.

Scottish Dragon Finder are holding three evening amphibian survey training events in South Lanarkshire where you can learn how to identify our native amphibian species, undertaking three methods of pond survey. This session is based entirely outdoors and gives you the opportunity to get hands on and learn about netting, egg-searching and torching techniques.

No previous knowledge or experience is required but booking is essential. Wellies and headtorch highly recommended, a headtorch may be borrowed but please mention when contacting if you need one.

Amphibian survey training evenings:

Friday 6 April
Chatelherault Country Park
Time: 7.45pm – 9.30pm

Thursday 19 April
Holmhill Wood Community Park
Time: 8.15pm – 10pm

Friday 11 May
Calderglen Country Park
Time: 9pm – 10.45pm

For bookings/queries please contact james.stead@froglife.org or phone 07972 593 603

Visit www.froglife.org/dragonfinder and check "events" for more information.



LOTTERY FUNDED

The Clyde and Avon Valley Landscape Partnership – A legacy

What do 300 volunteers, 960 workshops, 22.5 hectares of woodland and 115 artworks have in common?

Amongst many other things, they are who have taken part and what has taken place under the Clyde and Avon Valley Landscape Partnership (CAVLP) between 2012 and 2018.

If you visited the 'Land, Life, Water: Discovering the Clyde and Avon Valley Past and Present', exhibition at Chatelherault Country Park in February and March, you would have found out more about the 68 CAVLP projects, as well as the amazing cultural heritage of the area stretching from Chatelherault to New Lanark World Heritage Site and the Falls of the Clyde.

Under the Landscape Partnership scheme, a whopping 20,000 people were engaged, including 300 volunteers, 2000 school children and 960 community workshops. 22.5 hectares of native woodland has been regenerated at Chatelherault and the Falls of the Clyde, alongside 20km of path upgrades including sections of the Clyde Walkway and Community Links routes. 2000 natural play sessions have taken place in communities. 115 model creepy crawlies, stained glass and Make Your Way artworks; 26 songs; and 30 allotments, have been created. 987 orchard trees and 21 orchards have been planted, and 220 historic orchards have been mapped. 12 designed landscapes have been surveyed alongside 15 geological sites and 7 historic graveyards.



Quarter Primary School

The programme's lasting legacy is not just in the restored landscapes, improved footpaths and the Virtual Museum, but also with everyone who took part, the new community connections made, and the knowledge and skills people gained. From managing orchards to reading a landscape to reveal its secrets, or finding new confidence to get more children playing outdoors, local people will continue to enjoy the Clyde and Avon Valley. So, from all of us here at CAVLP, we'd like to thank all of you for taking part and giving your time and enthusiasm for this unique landscape and community.

The partnership is now looking at how popular aspects of the programme, like environmental volunteering and outdoor play, can be developed into the future. Supporting communities to deliver projects has also been

a feature of CAVLP and we will continue this work through a new project to help rural villages, funded by Lanarkshire LEADER programme and delivered by the Rural Development Trust. Keep an eye out on CAVLP social media for more news soon.

In the meantime, please tell us what aspects of CAVLP you have found most enjoyable or useful, by emailing

ewan@clydeandavonvalley.com



Chatelherault



Like us: Clyde and Avon Valley Landscape Partnership



@ClydeAvonValley

www.clydeandavonvalley.org

email: info@clydeandavonvalley.com



If you're looking for a new volunteer journey, or to expand your current volunteering schedule, the following volunteering options are still available through CAVLP partner organisations.

Stonehouse Park environmental volunteering – third Thursdays in the month.

Please contact Clydesdale Community Initiatives to book a place or for further details phone **01555 664211** or email enquiries@cciweb.org.uk

OutLET: Play Resource volunteers, various locations. Gain new skills, make new friends and help create play opportunities for local children! Email jackie@outletplayresource.co.uk or phone **0777 097 3256**. Find out more at www.outletplayresource.co.uk

Planting the Past at Chatelherault volunteering, Tuesdays and Saturdays. Planting the Past volunteers will work with South Lanarkshire Leisure and Culture to help restore the 18th century herbaceous border at Chatelherault to its original glory. To book your place email mike.taylor@southlanarkshireleisure.co.uk or phone **01698 426213**.

Volunteer gardeners, Hareleeshill Community Garden, Wilkes Crescent, Larkhall – every Tuesday, 10am – 1pm. Have green fingers or interested in expanding your gardening knowledge? Come along and get gardening in the beautiful mix of gardens – a wildlife garden, sensory garden and growers beds. Email office@larkhallcommunitygrowers.com or phone **01698 888197** to find out more.

New Lanark World Heritage Site volunteers. Volunteer opportunities are available in the Archive and Search Room, Events and Exhibitions, Crafts and Learning, Playparks and Gardens, and the Double Row Restoration project. Various times to suit your availability. Find out more at www.newlanark.org/world-heritage-site/volunteering.shtml, email jane.masters@newlanark.org or phone **01555 661345**.

North Lanarkshire Council environmental volunteers. Volunteer opportunities are available in sites including Dalzell Estate, Motherwell. To find out more, email the Countryside Ranger Service on greenspace@northlan.gov.uk or phone **01698 402090**. Other volunteering opportunities with North Lanarkshire Council include Archives, Active Schools, short breaks for children and young people with disabilities, and Care Share voluntary befriending project www.northlanarkshire.gov.uk/index.aspx?articleid=13873

RSPB Scotland Baron's Haugh environmental volunteering – every Thursday, 10am – 3pm. Find out more at www.rspb.org.uk/reserves-and-events/reserves-a-z/barons-haugh, email baronshaugh@rspb.org.uk or phone **0141 331 0993**.

Scottish Wildlife Trust, The Falls of Clyde environmental volunteering. Various times to suit your availability. Find out more at <https://scottishwildlifetrust.org.uk/reserve/falls-of-clyde/>, email fallsofclcyde@swt.org.uk or phone **01555 665262**.

South Lanarkshire Council conservation and Adopt-a-Path volunteering. Various times and locations, including Chatelherault Country Park and Mauldslee Woodlands. To find out more, visit www.southlanarkshire.gov.uk/info/200202/volunteering/1567/environmental_volunteering or email CAG@southlanarkshire.gov.uk

Volunteer at Craignethan Castle, Tillietudlem. For further information, visit: www.historicenvironment.scot/about-us/volunteer-with-us

Clydesdale Community Initiatives – CCI have volunteering opportunities available in their gardening, kitchen and natural cosmetics groups. Opportunities are ideal for anyone looking to develop new skills or utilise their existing skills, including a range of business skills from financial forecasting to market research. For further information, phone CCI on **01555 664211** or email enquiries@cciweb.org.uk

Biological recording the 2018 way....

We all love a good old-fashioned pen and paper to record wildlife that we see, but what do you do with the information? We don't want important biological records to languish in a notebook somewhere but how can we make it easier for ourselves in making sure this information is useful?

Most organisations at the very least have active websites, and in fact most have social media such as Twitter, Instagram and Facebook. The biggest development for smartphone and tablet users are the extremely convenient apps that can be downloaded...

Amphibians

Froglife has lots of guides to spotting frogs, toads, lizards and snakes as well as a **Dragonfinder App** that will help you work out what you've seen. Why not take a walk down to your local green space, whether it's your back garden or a nature reserve, and see what you can find?

www.froglife.org/info-advice/wildlife-spotting/

Mammal Atlas Project

Submit records of any mammal every time you see one to help us map mammal distribution as part of the **National Mammal Atlas Project (NMAP)**. The National Mammal Atlas Project (NMAP) aims to produce the first atlas in over 20 years to present vital new baseline distribution data, which will be continually updated through ongoing monitoring.



Orange-tip butterfly, Iain H Leach

Records can be submitted through our Record Submission page or through the Mammal Tracker App.

Download our free Mammal Tracker app for iPhone and Android, to record mammals when you're out and about!

www.mammal.org.uk/science-research/surveys/

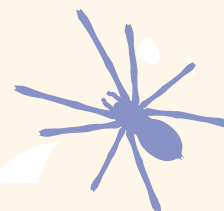
OPAL Bugs Count Survey – Online form or free Bugs Count app

Join in our nationwide bug hunt.
The best time to do this survey is from May to November.

Do you know what bugs are living near you? Take part in Bugs Count and discover the incredible variety of invertebrates that make their homes around us.

Find as many bugs as you can in our timed challenges and keep a special eye out for the six Species Quest bugs.

Your findings will help scientists learn more about the distribution of invertebrates across the country and how the urban environment may be affecting them.





Big Butterfly Count

Get involved with the Big Butterfly Count from 20 July – 12 August. Download an identification chart from the website, or look for the free App for your phone. Pick a sunny spot in your garden or local park and count butterflies for 15 minutes; a lovely relaxing activity for a nice day!

The big butterfly count is a nationwide survey aimed at helping us assess the health of our environment. It was launched in 2010 and has rapidly become the world's biggest survey of butterflies. Over 60,000 people took part in 2017, submitting 62,500 counts of butterflies and day-flying moths from across the UK

www.bigbutterflycount.org/

iRecord Butterflies is a free app that will guide you through the identification of any butterfly that you see in the UK and allow you to add your sighting to millions of other valuable records that inform the work of Butterfly Conservation.

BeeWalk

This is the national recording scheme to monitor the abundance of bumblebees across the UK. The survey would be impossible without volunteers like you, who identify and count the bumblebees they see on an hour's walk each month from March to October.

Anyone with basic bumblebee identification knowledge can become a BeeWalker – all you need is a spare hour or so every month to walk a fixed route of about a mile (you choose where it goes), and send us your sightings.

The information collected by BeeWalk volunteers is integral to monitoring how bumblebee populations change through time, and will allow us to detect early warning signs of population declines. All data collected contributes to important long-term monitoring of bumblebee population changes in response to changes in land-use and climate change and, ultimately, to informing how we manage the countryside. Visit www.bumblebeeconservation.org/beewalk/ to find out how the project has progressed so far.

Recording Apps are available for your smartphone for casual records.

Helpful websites:

iSpot: for identifying various species
www.ispot.org.uk

Arkive: photographs and information on species around the world www.arkive.org/

iRecord: add any of your wildlife sightings
www.brc.ac.uk/irecord/



Toad, C V Larcombe



Whitelee Windfarm Ranger Service



The WCRS 2018 events guide is now out and packed full of FREE, fun activities for all members of the family with everything from guided walks to arts and crafts, and of course nature themed sessions.

Their popular kids summer club, the Boggy Beasties, is back too, to keep the kids happy, healthy and active through the summer.

Get your copy of the guide from the WCRS web pages or from the Whitelee Visitor Centre as well as at local libraries."

Whitelee Windfarm



Some upcoming events:

Warble A.M.

Sunday 6 May: 6am - 9am Ardochrig

For people who enjoy an early morning – head to Whitelee to hear the best musical performances nature has to offer.

Booking essential.

Bioblitz - Ardochrig

Sat 9 June: 11am - 4pm Ardochrig

Bring your enthusiasm for nature and help the rangers survey some of Whitelee's flora and fauna while learning along the way.

Booking essential.

Please contact the Ranger Service for more information and to book events...

Web: www.eastrenfrewshire.gov.uk/whitelee

Facebook: [facebook.com/whitelee.countrysiderangers](https://www.facebook.com/whitelee.countrysiderangers)

Twitter: [@whiteleerangers](https://twitter.com/whiteleerangers)

Phone: 0141 577 3169



Our canine capers!

Focus on...

Clydesdale Community Initiatives (CCI)

Based in the rural Clydesdale area of Lanark, Clydesdale Community Initiatives (CCI) empowers individuals who are experiencing significant barriers to inclusion and employment, due to their learning disability, mental health issue or other difficult circumstance, the opportunity to make a meaningful contribution to their community.

To achieve this aim CCI utilise an innovative social enterprise model which focuses on the contributions a person can make and not their support needs. We believe this asset based approach is a key factor in CCI's success and is crucial to helping people break out of 'social care' bubbles.

On a day to day basis our participants are supported to engage in projects that make a tangible high profile difference to their community. These projects range from therapeutic gardening in the community, woodcraft workshops creating features for community art projects, micro-enterprises producing natural cosmetic or food products, to working alongside our social enterprise teams on semi commercial landscape construction projects.



CCI Members hard at work!

The semi commercial nature of these activities is essential to ensure that our participants are contributing to projects that have real value and are not just being used in unskilled voluntary labour tasks where the opportunity to develop skills and the public appreciation of the works are limited.

We have also established strong partnerships across the statutory, private and third sectors and are currently working alongside NHS Lanarkshire which will

engage CCI participants, NHS patients and external volunteers in the creation of therapeutic greenspaces across four hospital sites.

As we look to the future we hope to develop, strengthen and expand our enterprise and inclusion activities and to continue to work in collaboration with organisations from all sectors to ensure that our activities reflect the needs, interests and aspirations of our communities.



Our micro-enterprise



Get in touch!

To see previous copies of this newsletter visit www.southlanarkshire.gov.uk and search for "Volunteer Newsletter".

If you would like to join the volunteer network, suggest courses or events, or would like any more information, please get in touch with us using the details below.

Contact us

We have a Facebook page! This shows events and lots of information on local wildlife and activities.



Like us at "South Lanarkshire Countryside Rangers"
www.facebook.com/CountrysideRangers

Email: cag@southlanarkshire.gov.uk

Phone: 0303 123 1015

Write to: Countryside Ranger Service, Calderglen Country Park, East Kilbride G75 0QZ

If you need this information in another format or language, please contact us to discuss how we can best meet your needs.

Phone: 0303 123 1015 Email: equalities@southlanarkshire.gov.uk

www.southlanarkshire.gov.uk