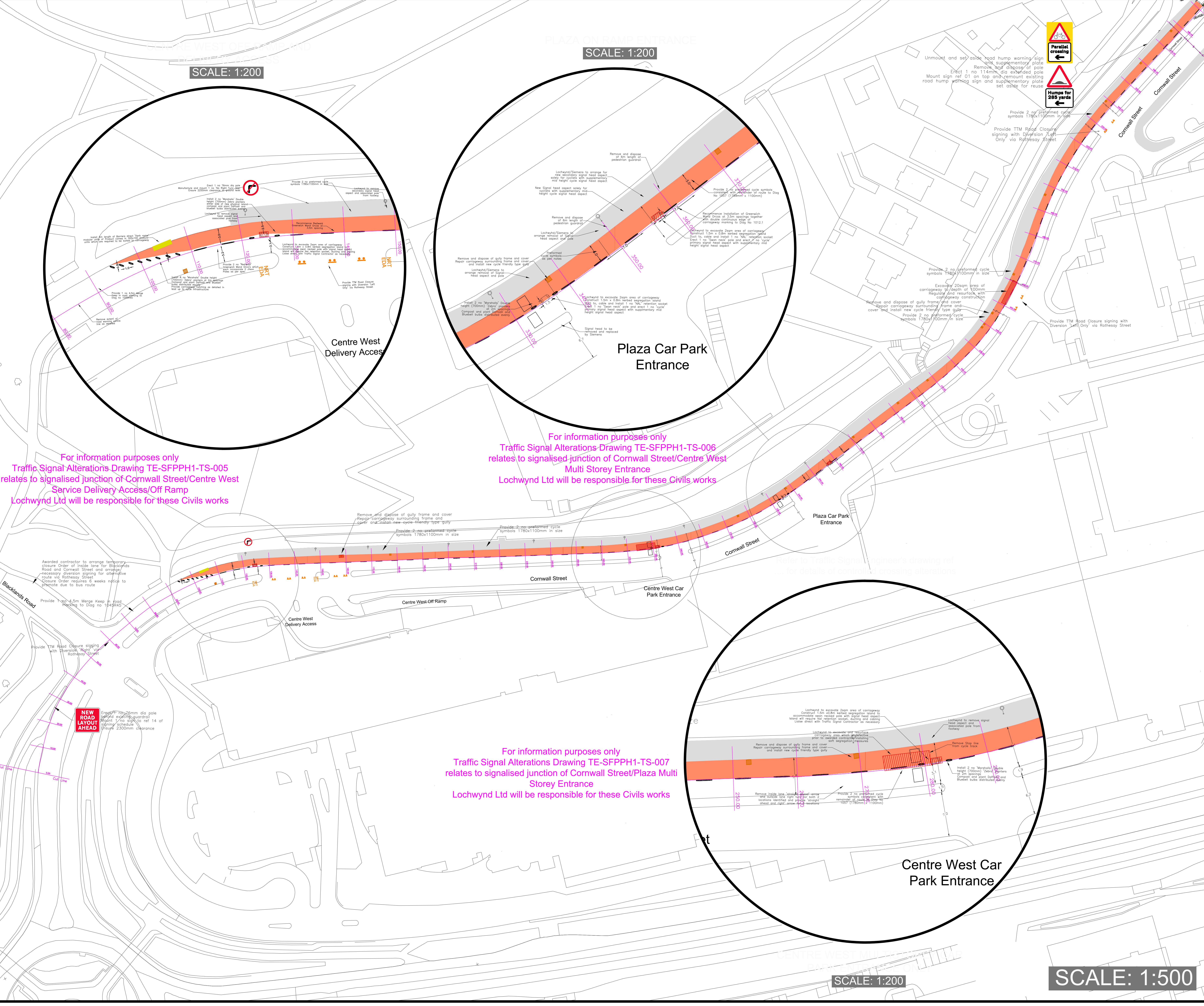


SCALE: 1:200

SCALE: 1:200

SCALE: 1:500



For information purposes only
 Traffic Signal Alterations Drawing TE-SFPPH1-TS-005
 relates to signalised junction of Cornwall Street/Centre West
 Service Delivery Access/Off Ramp
 Lochwynd Ltd will be responsible for these Civils works

For information purposes only
 Traffic Signal Alterations Drawing TE-SFPPH1-TS-006
 relates to signalised junction of Cornwall Street/Centre West
 Multi Storey Entrance
 Lochwynd Ltd will be responsible for these Civils works

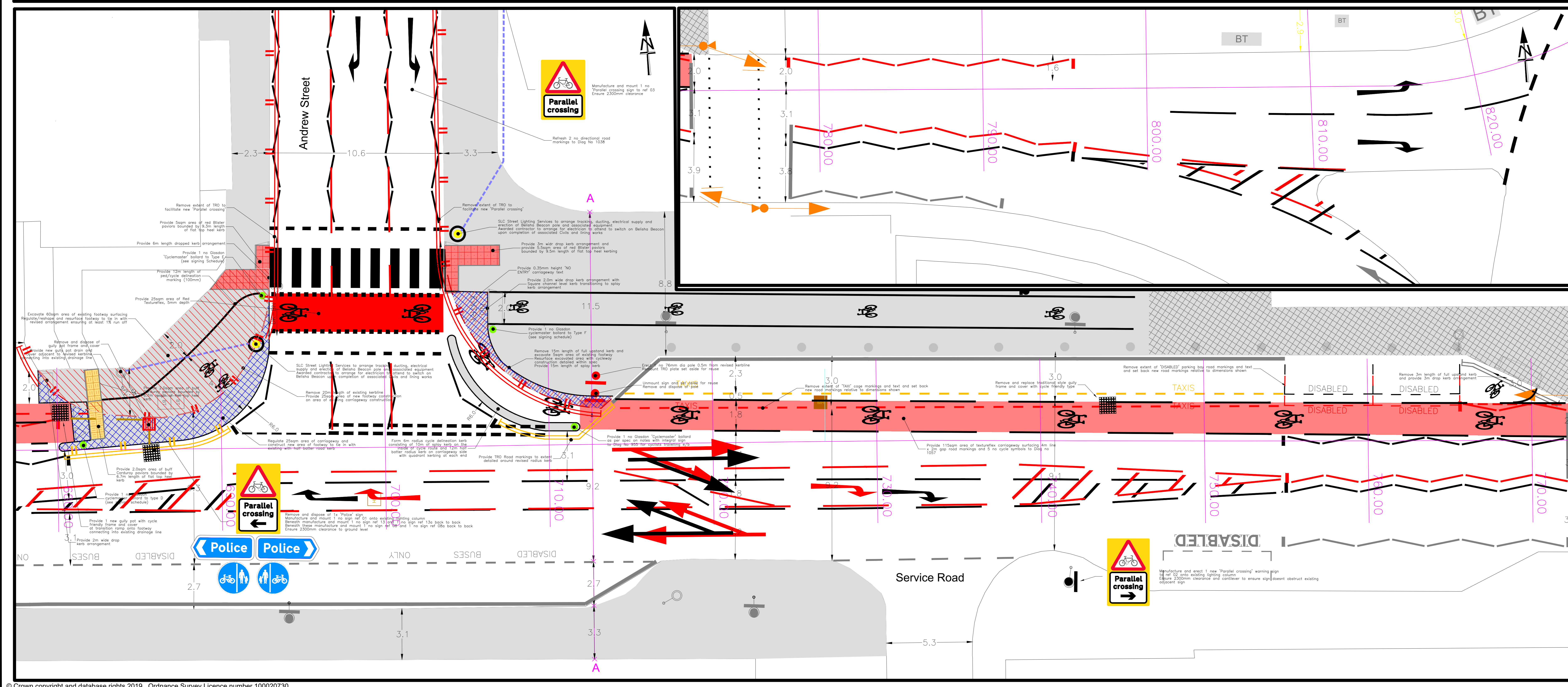
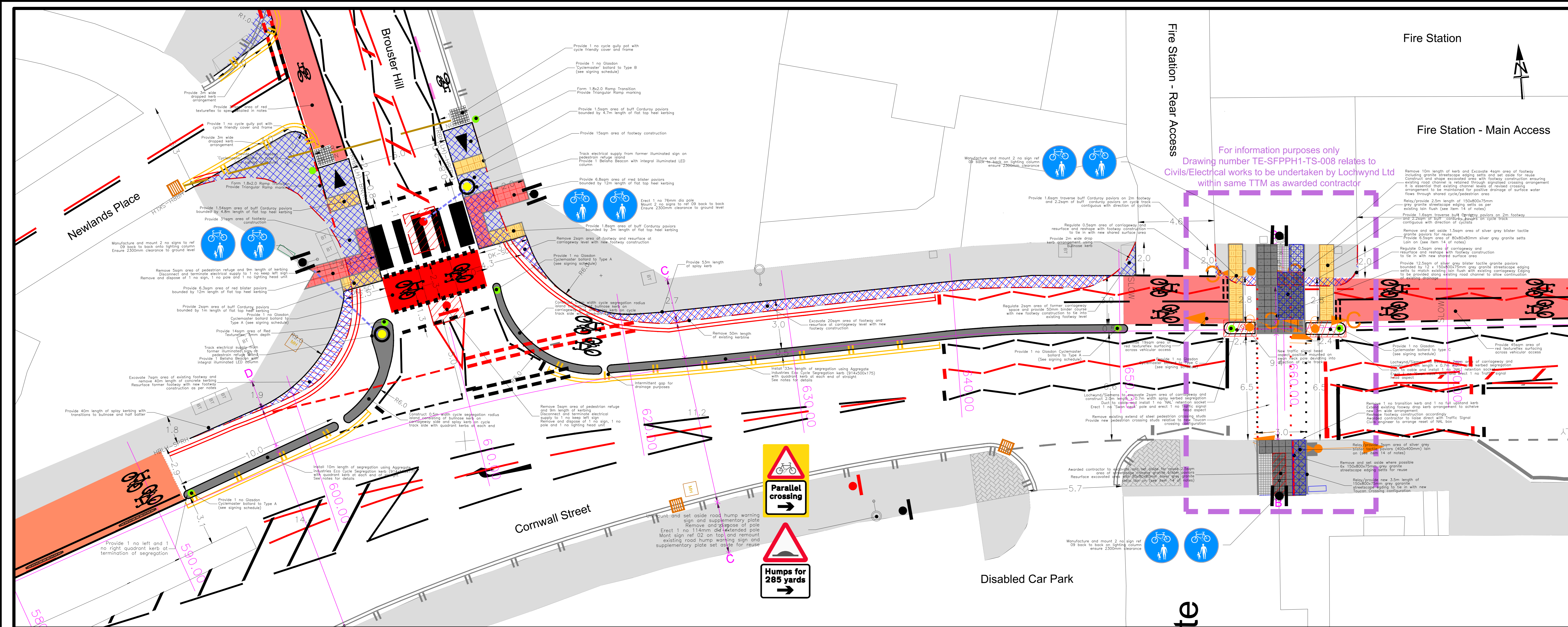
For information purposes only
 Traffic Signal Alterations Drawing TE-SFPPH1-TS-007
 relates to signalised junction of Cornwall Street/Plaza Multi
 Storey Entrance
 Lochwynd Ltd will be responsible for these Civils works

- Notes:
- Contact Ian Lang SLC Roads and Transportation Services 01698 453693.
 - Awarded contractor will be required to submit a programme of works for approval and note that a Temporary Closure Order will be required for the e/b carriageway of Cornwall Street requiring 6 weeks to promote.
 - All road markings to conform with Traffic Signs, Regulations and General Directions 2016 (TSRGD).
 - Provide 2300mm clearance from bottom of all signs to ground level unless otherwise detailed.
 - Cycle segregation on Cornwall Street to have 3.5m spacing unless otherwise detailed.
 - Replace existing Gully grating and frames with D400 loading to BS EN124 Pedestrian and Cycle friendly cross mesh style or similar type approved.
 - Awarded contractor to ensure 2 inch gap is provided every 10 metres where continuous edge of carriageway is shown for drainage purposes.
 - Awarded contractor to liaise direct with Lochwynd who will be responsible for works associated with Traffic Signal installations to co-ordinate and programme works associated with physical islands/NAL retention sockets and electrical connections.
 - All preformed cycle symbols on Cornwall Street to be medium size Diag no 1057 (1780 x 1100mm) unless otherwise detailed.
 - Soft Segregation products have a lead in time of 16 weeks delivery time. Awarded contractor will therefore require a sectional completion certificate for this aspect of the contract.
 - Aggregate Industries Eco Cycle Segregation kerbing have a lead in time for delivery. Awarded contractor to procure as soon as possible upon appointment.
 - For Glosdon cyclemaster bollards refer to drawing number TE-SFPPH1-004 (Types A - F).
 - Glosdon Cyclemaster bollards to be bolt down base type where specified on segregation features.

KEY

- PROPOSED CYCLEWAY
- FOOTPATH
- SHARED USE FOOTWAY/CYCLEWAY
- CARRIAGEWAY
- GRASS VERGE
- KERBLINE (NEW)
- TACTILE PAVIORS PEDS
- TACTILE PAVIORS CYCLES
- REDIWELD GREENWICH WAND ORCA
- REDIWELD WAND ORCA 'ONE PIECE'
- MARSHALLS 'ZEBRA' PLANTER DOUBLE HEIGHT
- PREFORMED CYCLE SYMBOLS 1780x1100mm / 1215x750mm

Rev:	Date:	Revisions	Checked Date:	Appvd Date:
South Lanarkshire Council, Community and Enterprise Resources				
Scale	: 1:200	Date	: JUN 2020	
Drawn by	: ICL	Checked by	: ICL	
Drawing Status	: PRELIM	Approved by	:	
Head of Roads and Transportation:				
Gordon Mackay B.Sc., C.Eng., M.I.C.E.				
154 Montrose Crescent, Hamilton, ML3 6LB				
SPACES FOR PEOPLE EAST KILBRIDE - PHASE 1 CORNWALL STREET OVER ENTIRE LENGTH SHEET 1 OF 3				
Drawing No:	TE-SFPPH1-001			
Rev:				
File No:	EK CYCLE NETWORK PH2			



- Notes:
- Contact Ian Long SLC Roads and Transportation Services.
 - Awarded contractor will be required to submit a programme of works for approval and note that a Temporary Closure Order will be required for the e/b carriageway of Cornwall Street requiring 6 weeks to promote.
 - All road markings to conform with Traffic Signs, Regulations and General Directions 2016 (TSRGD).
 - Provide 2300mm clearance from bottom of all signs to ground level unless otherwise detailed.
 - Cycle segregation on Cornwall Street to have 3.5m spacing unless otherwise detailed.
 - Replace existing Gully grating and frames with D400 loading to BS EN124 Pedestrian and Cycle friendly cross mesh style or similar type approved.
 - Awarded contractor to ensure 2 inch gap is provided every 10 metres where continuous edge of carriageway is shown for drainage purposes.
 - Awarded contractor to liaise direct with Lochynd who will be responsible for works associated with Traffic Signal installations to co-ordinate and programme works associated with physical islands/NAL retention sockets and electrical connections.
 - All preformed cycle symbols on Cornwall Street to be medium size Diag no 1057 (1780 x 1100mm) unless otherwise detailed.
 - Soft Segregation products have a lead in time of 16 weeks delivery time. Awarded contractor will therefore require a sectional completion certificate for this aspect of the contract.
 - Aggregate Industries Eco Cycle Segregation kerbing have a lead in time for delivery. Awarded contractor to procure as soon as possible upon appointment.
 - For Glasdon cyclometer bollards refer to drawing number TE-SFPPH1-004 (Types A - F).
 - Glasdon Cyclometer bollards to be bolt down base type where specified on segregation features.
 - All streetscape materials detailed to be laid on 30mm thick bedding of 4:1 dry winn sand/cement with a grouting of joints 2:1 building sand/cement (west mix).

KEY

- PROPOSED CYCLEWAY
- FOOTPATH
- SHARED USE FOOTWAY/CYCLEWAY
- CARRIAGEWAY
- GRASS VERGE
- KERBLINE (NEW)
- TACTILE PAVIORS PEDS
- TACTILE PAVIORS CYCLES
- REDIWELD GREENWICH WAND ORCA
- REDIWELD WAND ORCA 'ONE PIECE'
- MARSHALLS 'ZEBRA' PLANTER DOUBLE HEIGHT
- PREFORMED CYCLE SYMBOLS 1780x1100mm / 1215x750mm

Rev:	Date:	Revisions	Checked Date:	Appvd Date:

South Lanarkshire Council,
Community and Enterprise Resources

Scale : 1:200 Date : JUN 2020

Drawn by : ICL Checked by : ICL

Drawn Status : PRELIM Approved by :

Head of Roads and Transportation:
Gordon Mackay B.Sc., C.Eng., M.I.C.E.

154 Montrose Crescent, Hamilton, ML3 6LB

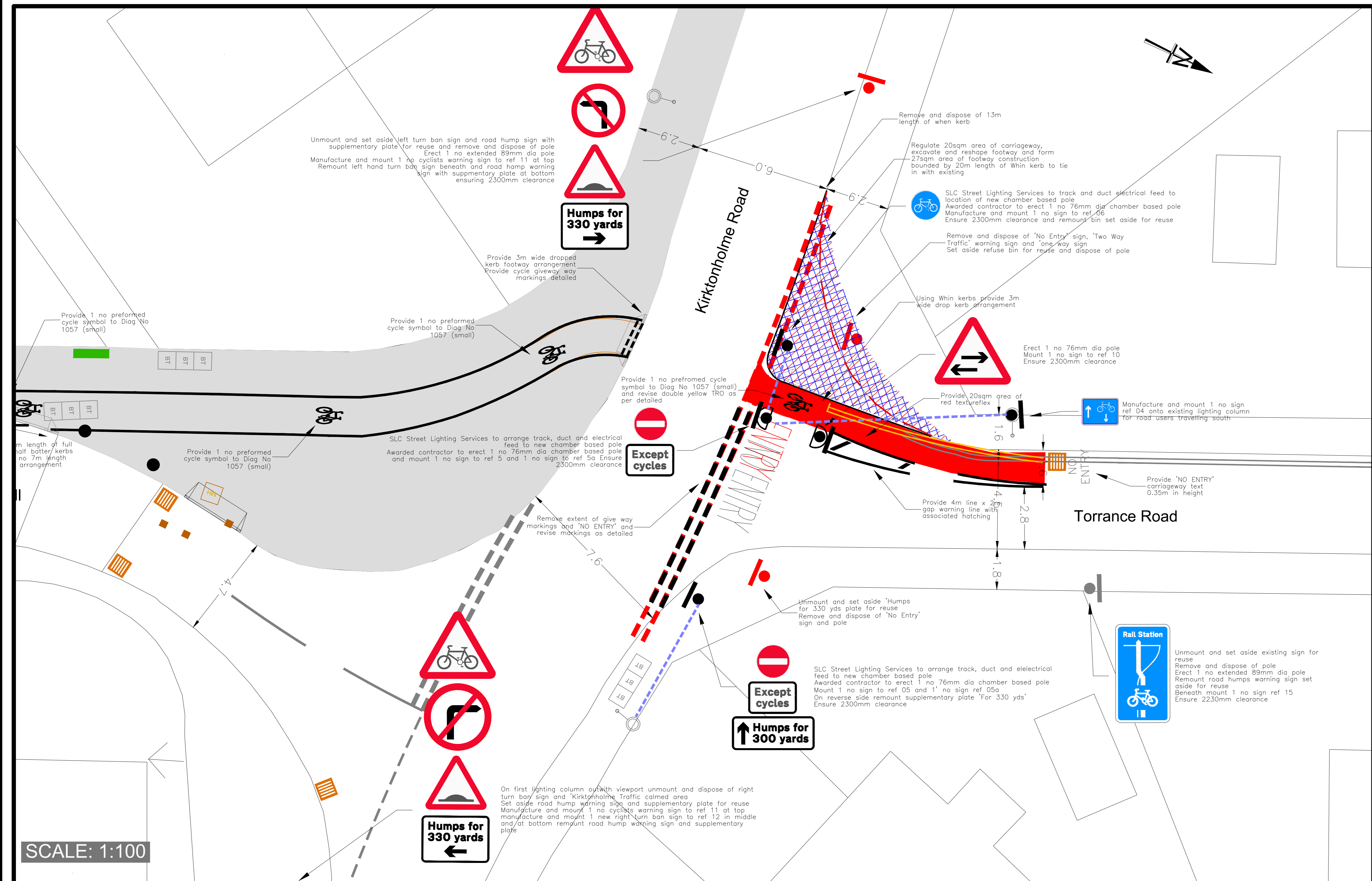
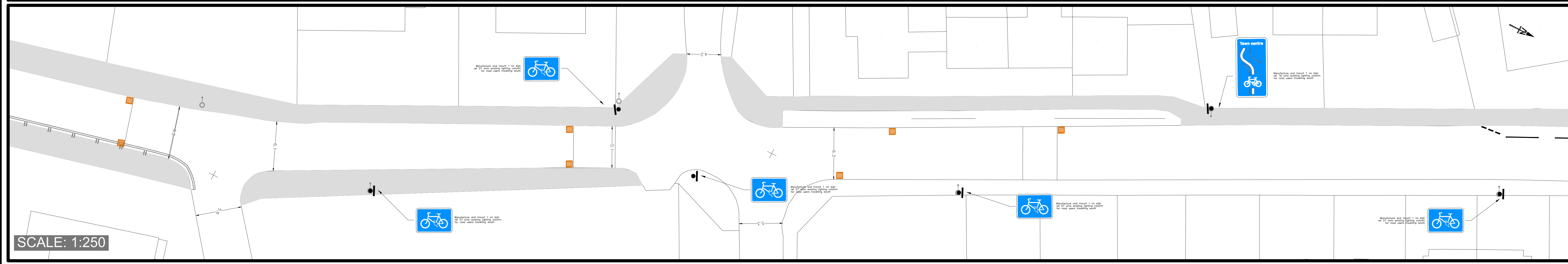
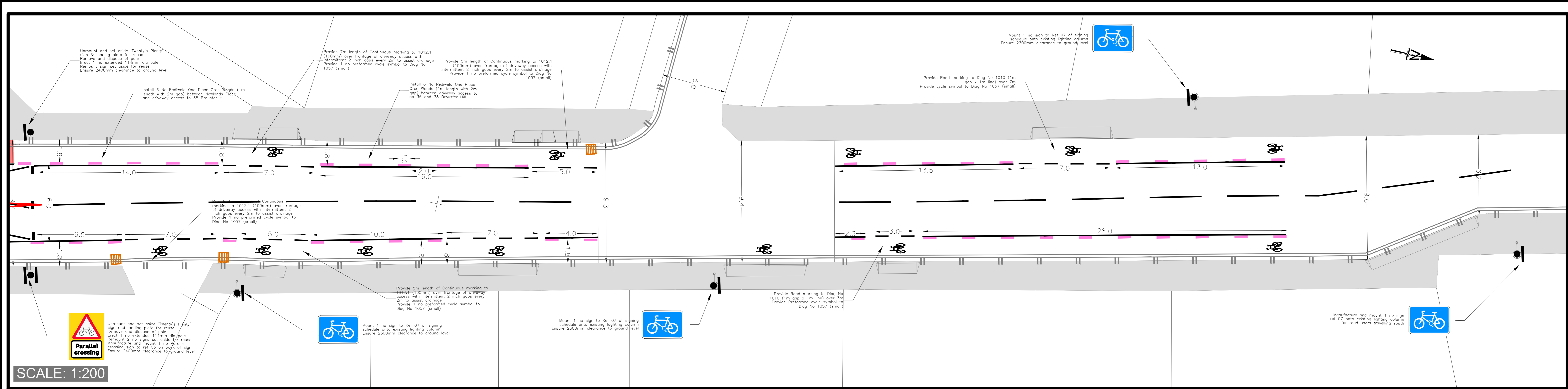
SPACES FOR PEOPLE
EAST KILBRIDE - PHASE 1
CORNWALL STREET OVER ENTIRE LENGTH
SHEET 2 OF 3

Drawing No: TE-SFPPH1-002

Rev: File No: EK CYCLE NETWORK PH2

SOUTH LANARKSHIRE 2020011

Original Drawing Size: 841*1189 (A0)



- Notes:
- Contact Ian Long SLC Roads and Transportation Services.
 - Awarded contractor will be required to submit a programme of works for approval and note that a Temporary Closure Order will be required for the e/b carriageway of Cornwall Street requiring 6 weeks to promote.
 - All road markings to conform with Traffic Signs, Regulations and General Directions 2016 (TSRGD).
 - Provide 2300mm clearance from bottom of all signs to ground level unless otherwise detailed.
 - Cycle segregation on Cornwall Street to have 3.5m spacing unless otherwise detailed.
 - Replace existing Gully grating and frames with D400 loading to BS EN124 Pedestrian and Cycle friendly cross mesh style or similar type approved.
 - Awarded contractor to ensure 2 inch gap is provided every 10 metres where continuous edge of carriageway is shown for drainage purposes.
 - Awarded contractor to liaise direct with Lochwynd who will be responsible for works associated with Traffic Signal installations to co-ordinate and programme works associated with physical islands/NAL retention sockets and electrical connections.
 - All preformed cycle symbols on Cornwall Street to be medium size Diag no 1057 (1780 x 1100mm) unless otherwise detailed.
 - Soft Segregation products have a lead in time of 16 weeks delivery time. Awarded contractor will therefore require a sectional completion certificate for this aspect of the contract.
 - Aggregate Industries Eco Cycle Segregation kerbing have a lead in time for delivery. Awarded contractor to procure as soon as possible upon appointment.
 - For Glasdon cyclemaster bollards refer to drawing number TE-SFPPH-004 (Types A - E).
 - Glasdon Cyclemaster bollards to be bolt down base type where specified on segregation features.

KEY

- PROPOSED CYCLEWAY
- FOOTPATH
- SHARED USE FOOTWAY/CYCLEWAY
- CARRIAGEWAY
- GRASS VERGE
- KERBLINE (NEW)
- TACTILE PAVIORS PEDS
- TACTILE PAVIORS CYCLES
- REDIWELD GREENWICH WAND ORCA
- REDIWELD WAND ORCA 'ONE PIECE'
- MARSHALLS 'ZEBRA' PLANTER DOUBLE HEIGHT
- PREFORMED CYCLE SYMBOLS 1780x1100mm / 1215x750mm

Rev:	Date:	Revisions	Checked Date:	Appvd Date:
South Lanarkshire Council, Community and Enterprise Resources				
Scale	: 1:200	Date	: JUN 2020	
Drawn by	: ICL	Checked by	: ICL	
Drawing Status	: PRELIM	Approved by	:	
Head of Roads and Transportation:				
Gordon Mackay B.Sc., C.Eng., M.I.C.E.				
154 Montrose Crescent, Hamilton, ML3 6LB				
SPACES FOR PEOPLE EAST KIBLRIDE - PHASE 1 BROUSTER HILL TO RAIL STATION SHEET 3 OF 3				
Drawing No:	TE-SFPPH-003			
Rev:				
File No:	EK CYCLE NETWORK PH2			