



South Lanarkshire
University
Health and Social Care
Partnership

South Lanarkshire Integration Joint Board Strategic Commissioning Plan | 2025-28



nurture
flow
recovery
access
protect

Working together to improve health and wellbeing **in** the community – **with** the community

Foreword



Professor Soumen Sengupta
Chief Officer

We are pleased to introduce our new Strategic Commissioning Plan 2025 – 2028 (the Plan) which sets out how health and social care services will be delivered to improve the quality of support for people in South Lanarkshire.

The Plan sets out our key strategic goals which will provide a consistent focus for the work that we do and the decisions that we make.

Alongside the five strategic goals we commit to here, we will continue to deliver against the [National Health and Wellbeing Indicators](#); and contribute to the delivery of key local strategies – notably the [NHS Lanarkshire Our Health Together Strategy](#), [South Lanarkshire Connect](#) and the [South Lanarkshire Community Plan](#).

In discharging our responsibilities, we will embrace and promote the principles of [Getting it right for everyone \(GIRFE\)](#), [The Promise](#) and [Realistic Medicine](#) with a shared emphasis on empowerment, efficiency, collaboration and compassion.

Together this reflects our commitment to working with others to improve access; to shifting the balance of care; to digital and technological innovation; and to prevention.



Margaret Walker
Chair



Lesley McDonald
Vice-Chair

The [challenges facing health and social care services](#) are well documented – as are the challenges and inequalities that face many of our communities. Ensuring sustainable and effective services and supports for local people will mean that we will have work as a whole system to address these challenges and confront bold choices where required over the next three years.

We will do this responsibly, prudently and fairly in striving to make the best use of all of our resources for the people we serve and with the staff we have the privilege of leading.

Our mission here goes beyond that though.

Our health and social care teams have a track-record of improvement through teamworking, innovation and learning. We will continue to champion our staff as they lead those improvements.

And whilst this Plan is focused on key areas for delivery over the medium-term, we are steadfast in our commitment to whole system working – locally and nationally - to secure improvements in population health and health equity over the long-term.

Our continued thanks to all of our staff, our partners and the communities that we serve.

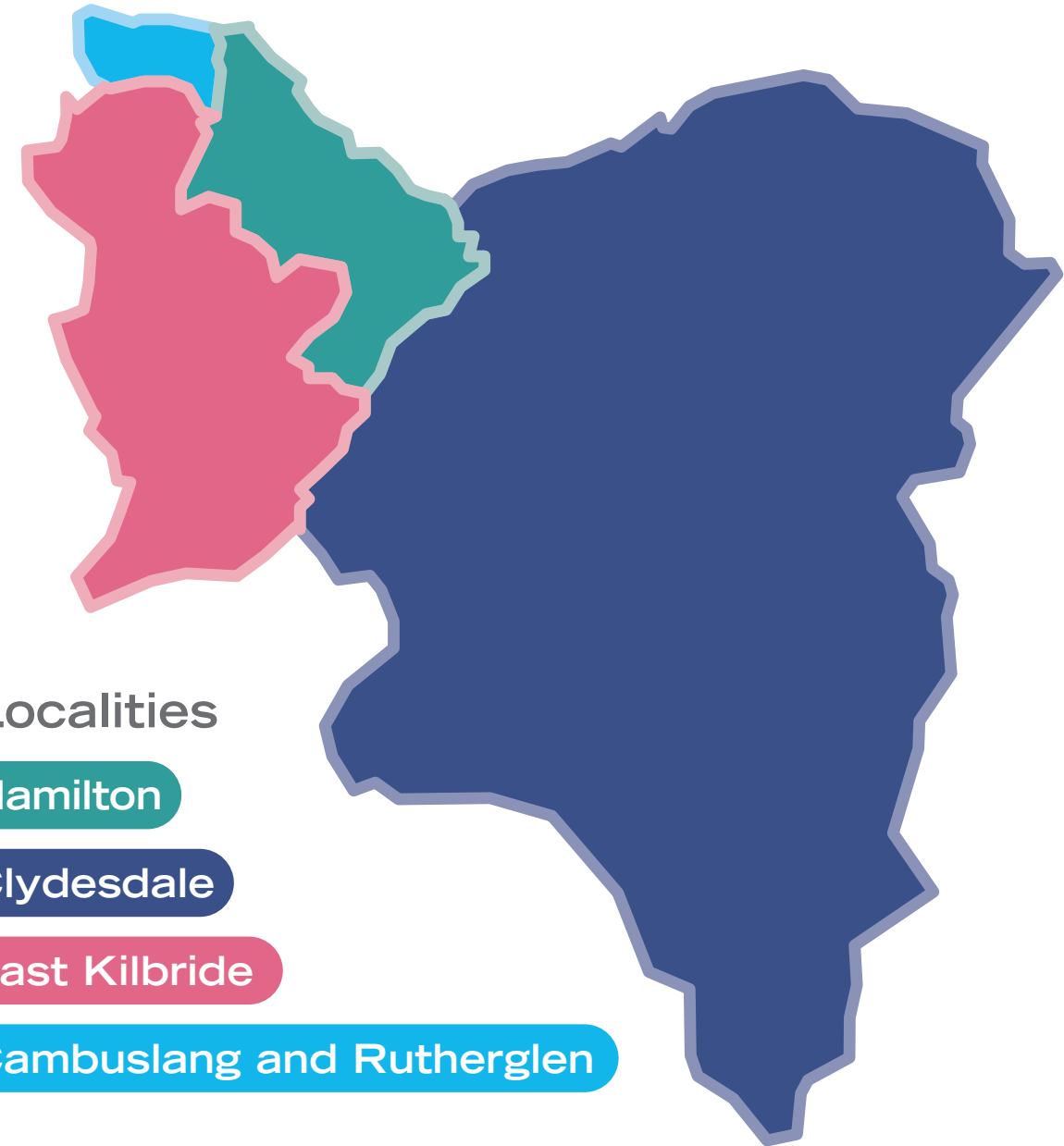
Our Area

South Lanarkshire has a **population of just over 320,000.**

By 2043 the population is **projected to grow by almost 1.3%** *although decreases are expected in most age groups under 64.*

By 2043 the population aged **over 75 is projected to grow by almost 50%.**

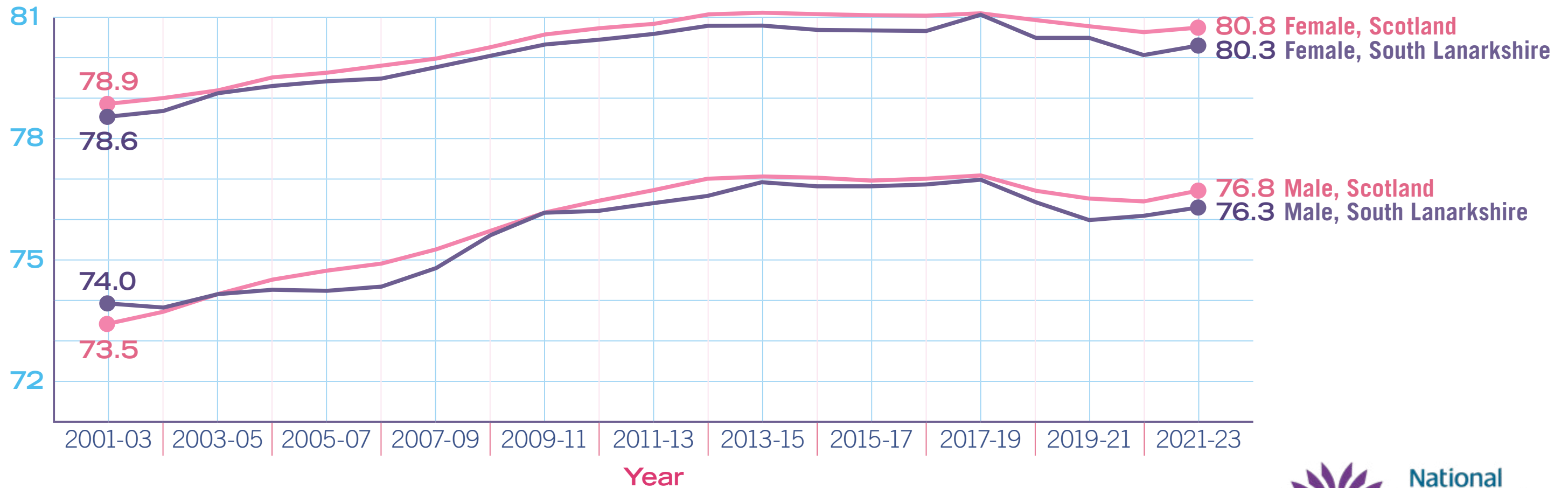
Just over 1 in 5 children aged 0 to 15 are in relative low-income households.



Our Wellbeing

Life expectancy in South Lanarkshire is lower - for both males and females - compared to Scotland.

Life expectancy at birth, 2001-03 to 2021-23



Our Role

As defined within the [Public Bodies \(Joint Working\) \(Scotland\) Act 2014](#):

- The IJB is responsible for the [strategic planning](#) of the functions delegated to it and for ensuring the delivery of those functions.
- All IJBs have a duty to deliver the [national Health and Wellbeing Outcomes](#).

Integration Joint Board (Strategic)

- Formal public body
- Develops and leads the strategy for Health and Social Care through the Strategic Commissioning Plan
- Issues 'Directions' to the Council and the Health Board

Health and Social Care Partnership (Operational)

- Takes forward the operational implementation of the plan on behalf of the Council and the Health Board
- Provides assurance to the IJB and the parties on progress with the implementation of the plan



Our Mission

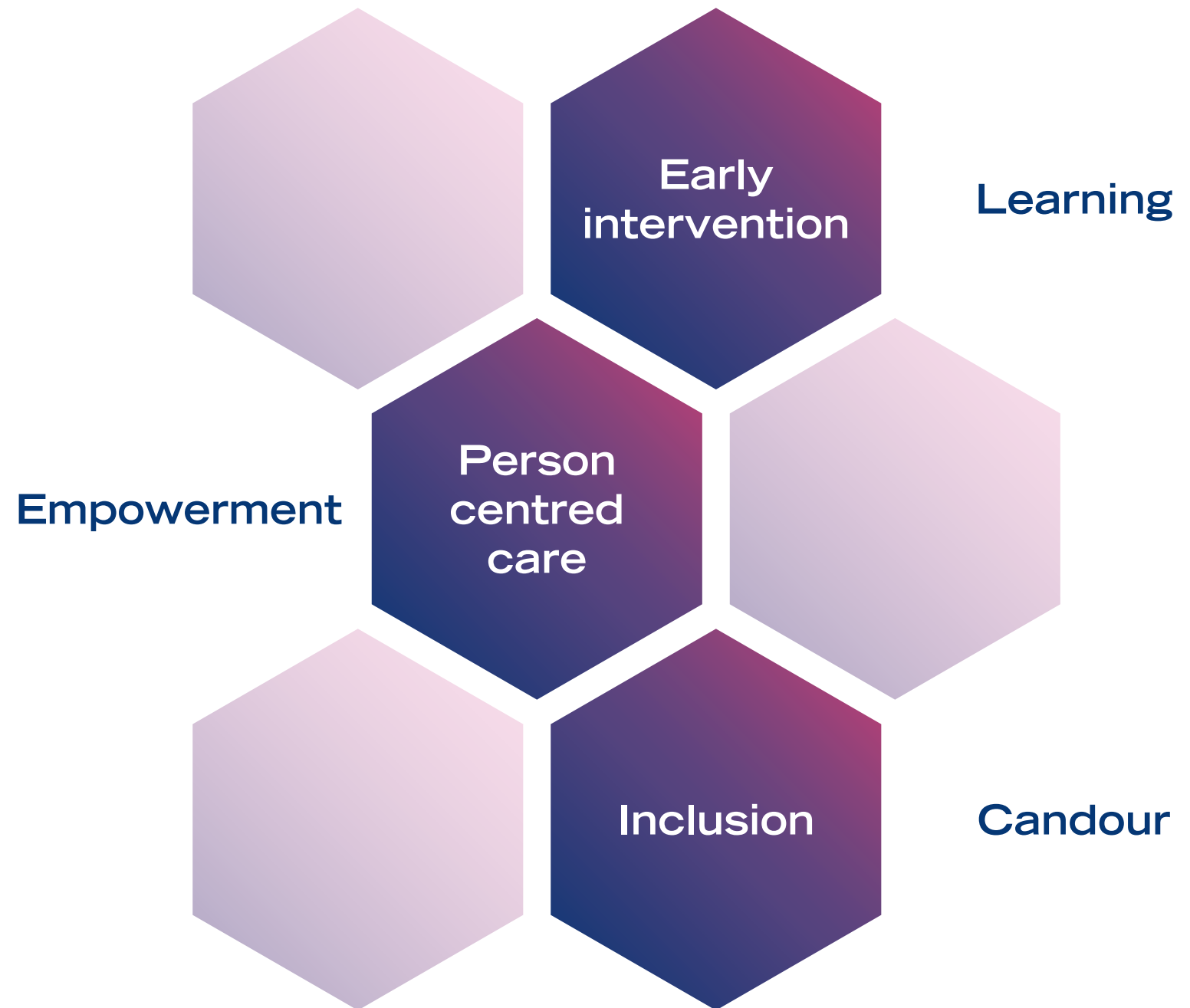
Working together to improve health and wellbeing in the community - with the community



Our Vision

For all our communities to live longer and healthier lives, supported by the right care, in the right place and at the right time.

Our Guiding Principles



Our Strategic Goals



Nurture

We will support more children to reach their developmental milestones



Access

We will improve the accessibility and range of primary care services



Flow

We will shift the balance of care from acute to community services, including reducing delayed discharges



Protect

We will strengthen our public protection arrangements to help keep vulnerable children and adults safe from harm



Recovery

We will reduce harm from substance misuse and reduce drug related deaths

nurture
flow
recovery
access
protect



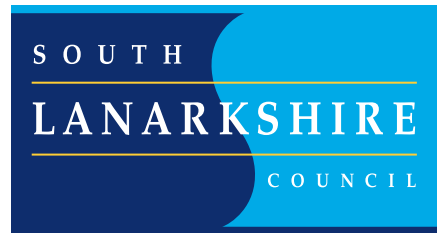
Our Strategic Partners



Our Health
Together

Our Strategic Partners

To improve the lives and prospects of everyone in South Lanarkshire



We need to put people first and reduce inequality



We need to recover, progress and improve



We need to work towards a sustainable future in sustainable places



Our Outcomes

National Health and Wellbeing Outcomes



Scottish Government
Riaghaltas na h-Alba
gov.scot

People able to look after and improve their own health and wellbeing

People able to live independently in their community

Positive experiences of services, and dignity respected

Services contribute to reducing health inequalities

Support unpaid carers to look after their own health and wellbeing

People who use health and social care services are safe from harm

Services help to maintain or improve the quality of life



Staff feel engaged and supported to continuously improve services

Resources used effectively and efficiently

Our Catalysts for Change



Financial Sustainability

The icon for Financial Sustainability features a scale of justice, two pound (£) symbols, a gear with a checkmark, and a factory with a leaf, all enclosed in a dashed circle.



Workforce Development

The icon for Workforce Development shows a lightbulb, a gear, a person with a circular arrow, and a gear with a checkmark, all enclosed in a dashed circle.



Carers Support

The icon for Carers Support depicts a handshake, a speech bubble with a cross, a speech bubble with a list, and a checkmark in a circle, all enclosed in a dashed circle.



Digital Development

The icon for Digital Development includes a smartphone, a laptop with code symbols, a gear, and a wrench, all enclosed in a dashed circle.



Collaborative Innovation

The icon for Collaborative Innovation shows a network of people, a gear with a checkmark, and a pound (£) symbol, all enclosed in a dashed circle.

Our Resources

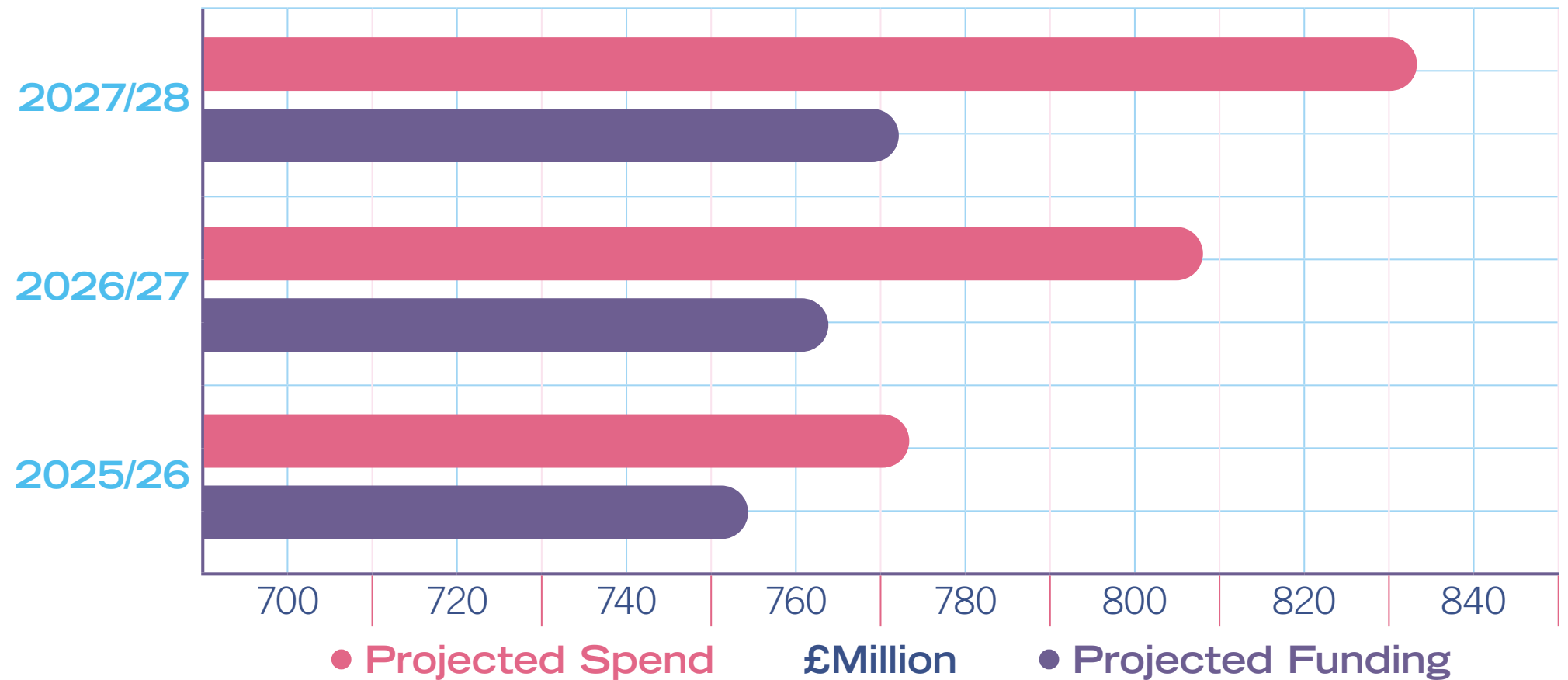
The IJB has a [statutory duty to set a balanced budget](#).

The IJB has [a track-record of achieving financial balance](#).

The IJB recognises that [transformational change and whole system action are required to deliver sustainable health and social care services for local communities](#).



Financial Forecast 2025/26 – 2027/28



Our Decisions

Our Sustainability and Value Option Appraisal Screening approach provides a consistent and transparent framework for considering proposals for change, reinforcing the IJB's commitment to prioritising the most vulnerable and at-risk across our communities.

Public Protection
and
Clinical Safety

Professional
Registration
Requirements

Service Redesign
or Reduction
with impact on
outcomes

Service Redesign
or Reduction with
no/limited impact
on outcomes

Benchmarking
and Efficiencies



Our Governance

The IJB has well-established governance and decision-making arrangements in place.

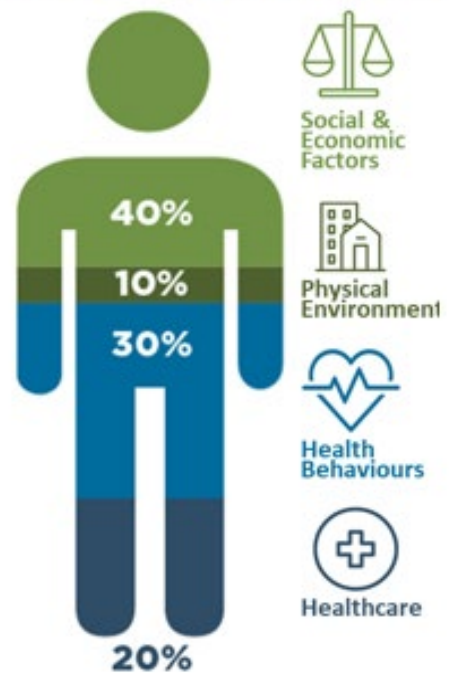


Our Ambition

To improve life expectancy by 2035 whilst reducing the life expectancy gap between the most deprived local areas and the national average.

The IJB understands that the [primary determinants](#) of health and inequalities are economic, environmental and social.

Four Pillars of Health



The IJB is committed to working through and with local Community Planning Partners in order to secure long term improvements for local people and future generations.





If you need this information in another language or format,
please contact us to discuss how we can best meet your needs.
Phone: 0303 123 1015 Email: equalities@southlanarkshire.gov.uk



South Lanarkshire
University
Health and Social Care
Partnership

Working together to improve health and wellbeing in the community – with the community